

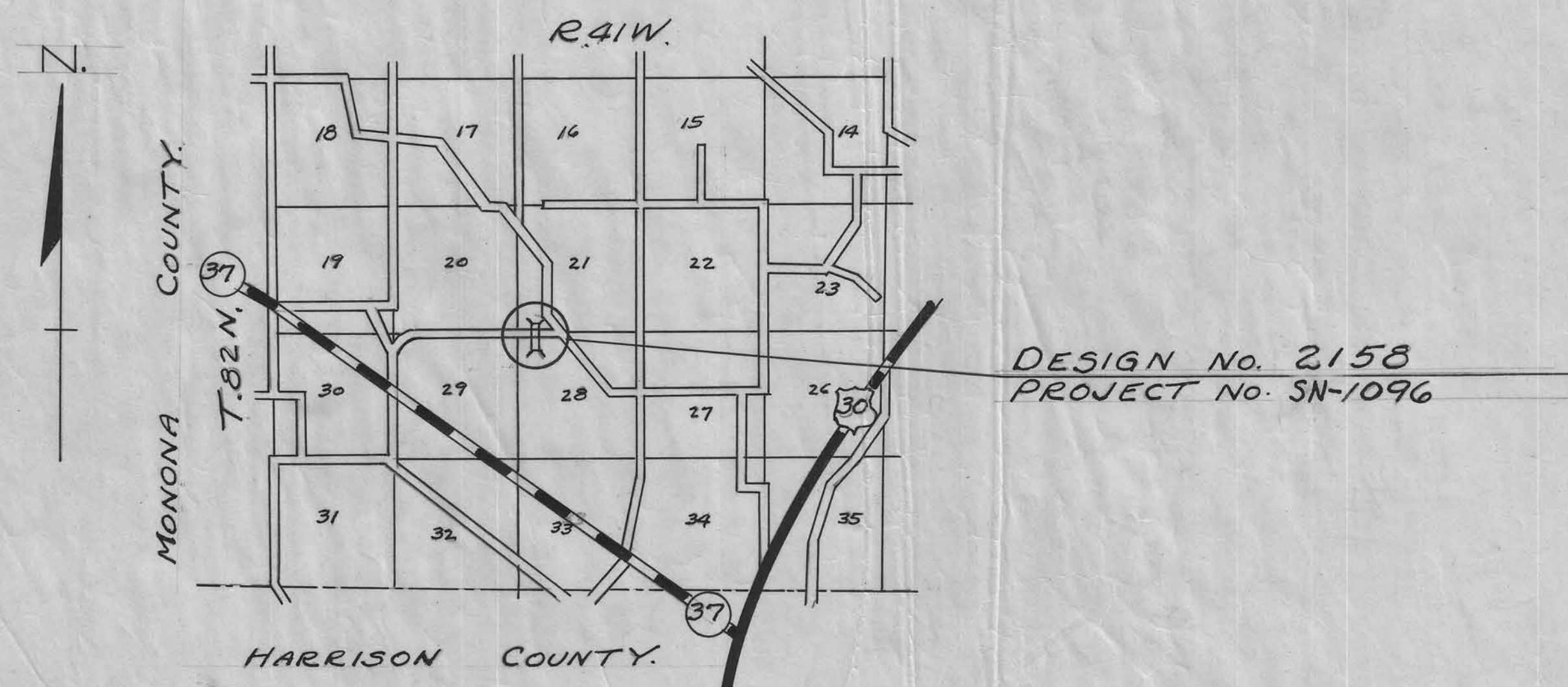
JULY 22 - 1958

STATE OF IOWA  
 STATE HIGHWAY COMMISSION  
 DESIGN FOR  
 12'x10' R.C. BOX, TWIN OPENINGS, FLUME OUTLET  
 SECONDARY ROAD SYSTEM PROJ. SN-1096  
 CRAWFORD COUNTY  
 JANUARY 1958.

MILEAGE SUMMARY: = 27'-0" = 0.00511 MILES.

SPECIFICATIONS:  
 Construction: Standard Specifications of  
 the Iowa State Highway Commission, Series  
 of 1956.

In Letting of July 22, 1958	DESIGN-2158 BOYER TWP. CRAWFORD COUNTY.					
	SEC-21-28 STA. 65+93.0 OVER LOCAL CREEK					
	12'x10' R.C. BOX WITH TWIN OPENINGS, FLUME OUTLET.					
	CONCRETE	REIN. STEEL	CLASS#23, EXCAV.	REMOVAL OF OLD STRUCTURE		
	265.90 C.Y.	29,717 LBS.	1566 C.Y.	LUMP SUM.		



APPROVED.

[Redacted Signature]

APPROVED

[Redacted Signature]  
 CHIEF ENGINEER. DATE  
 IOWA HIGHWAY COMMISSION.

DEPARTMENT OF COMMERCE  
 BUREAU OF PUBLIC ROADS.

RECOMMENDED FOR APPROVAL

DISTRICT ENGINEER. DATE

APPROVED

[Redacted Signature]  
 BOARD OF SUPERVISORS. DATE

DIVISION ENGINEER DATE

affls None  
 6-27-58



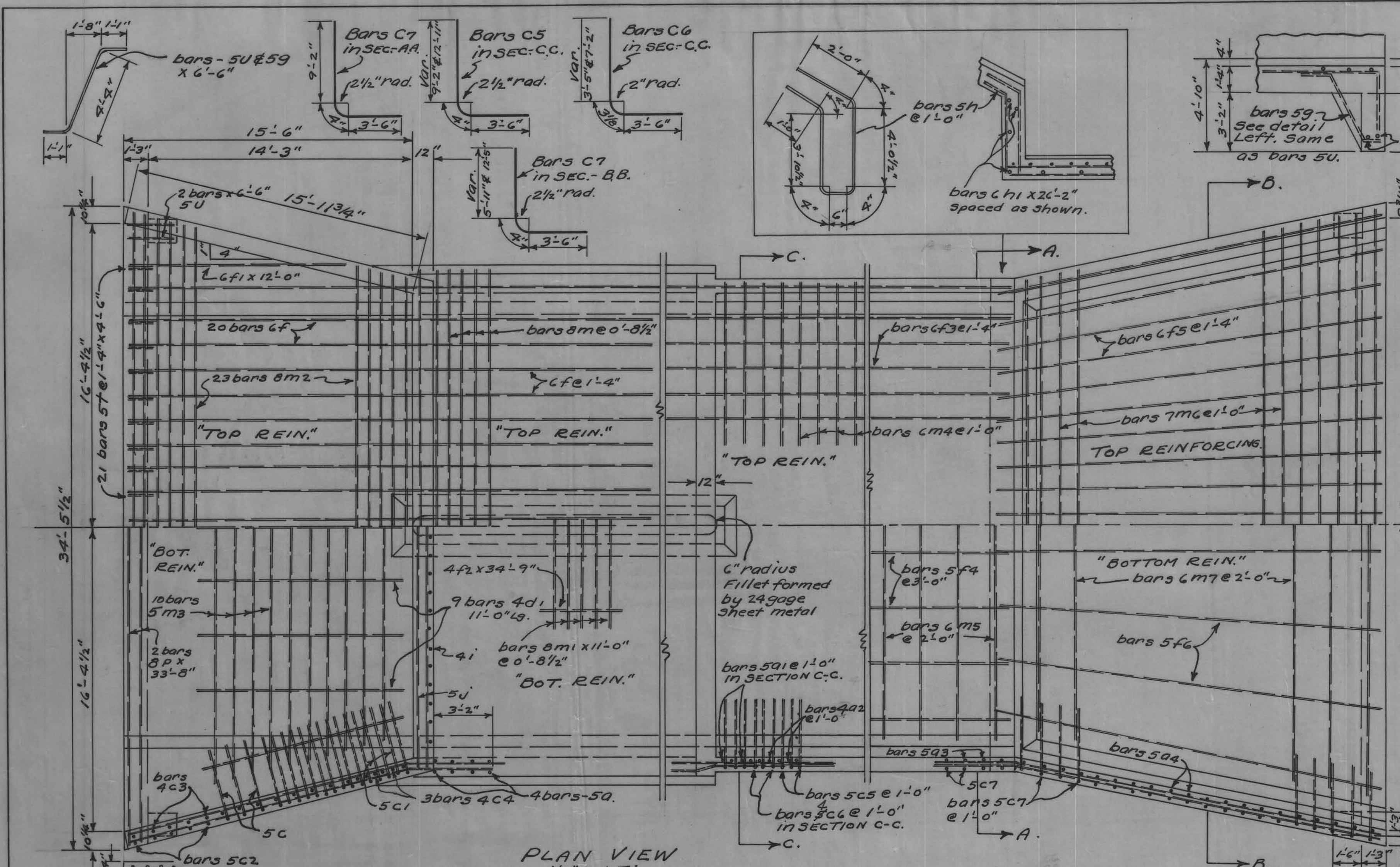
File 19744

4717 July 22/58  
 CRAWFORD COUNTY. Design No.-2158 PROJ# SN-1096

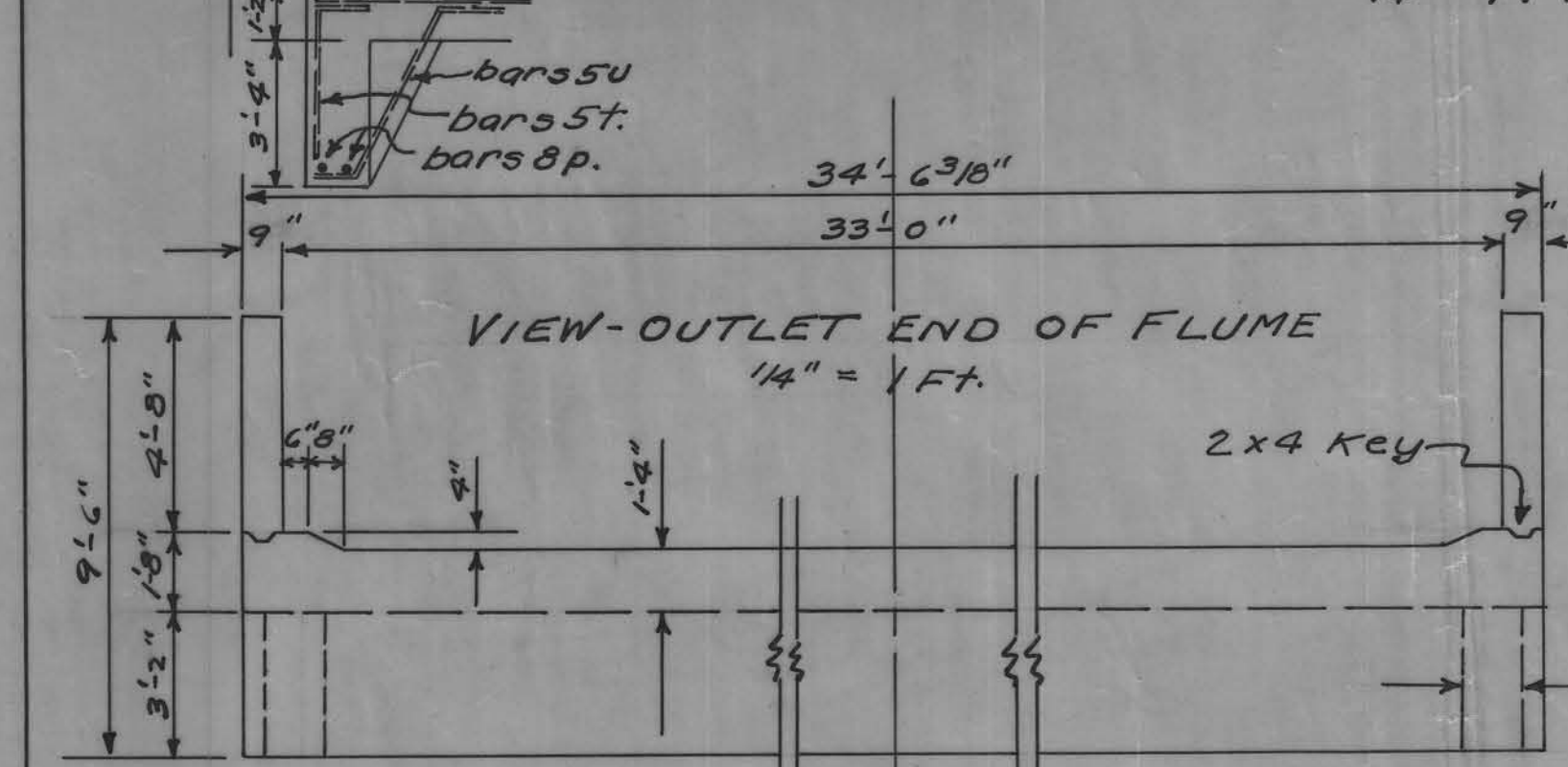
1/2

B.M#5, Sta-64+00, R.E.A. pole north El.=281.63

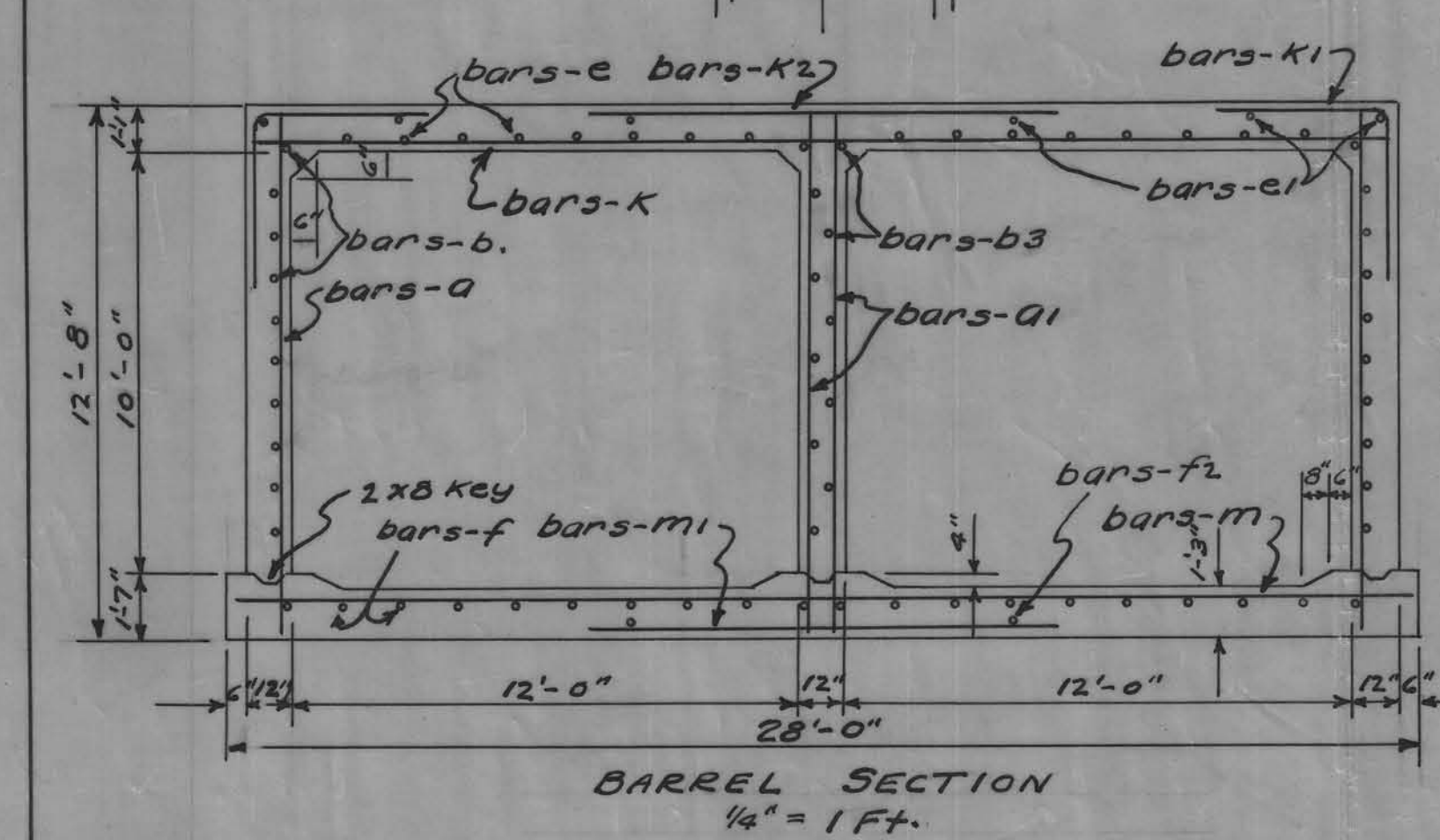
A = 26°34'  
 C = 0°49'  
 B = 8'-1 1/2"  
 S = 35'-7 3/4"  
 V = 8'-4 5/8"  
 W = 15.94'  
 Rad. = 35' 6 9/16"



PLAN VIEW  
 1/4" = 1 FT.

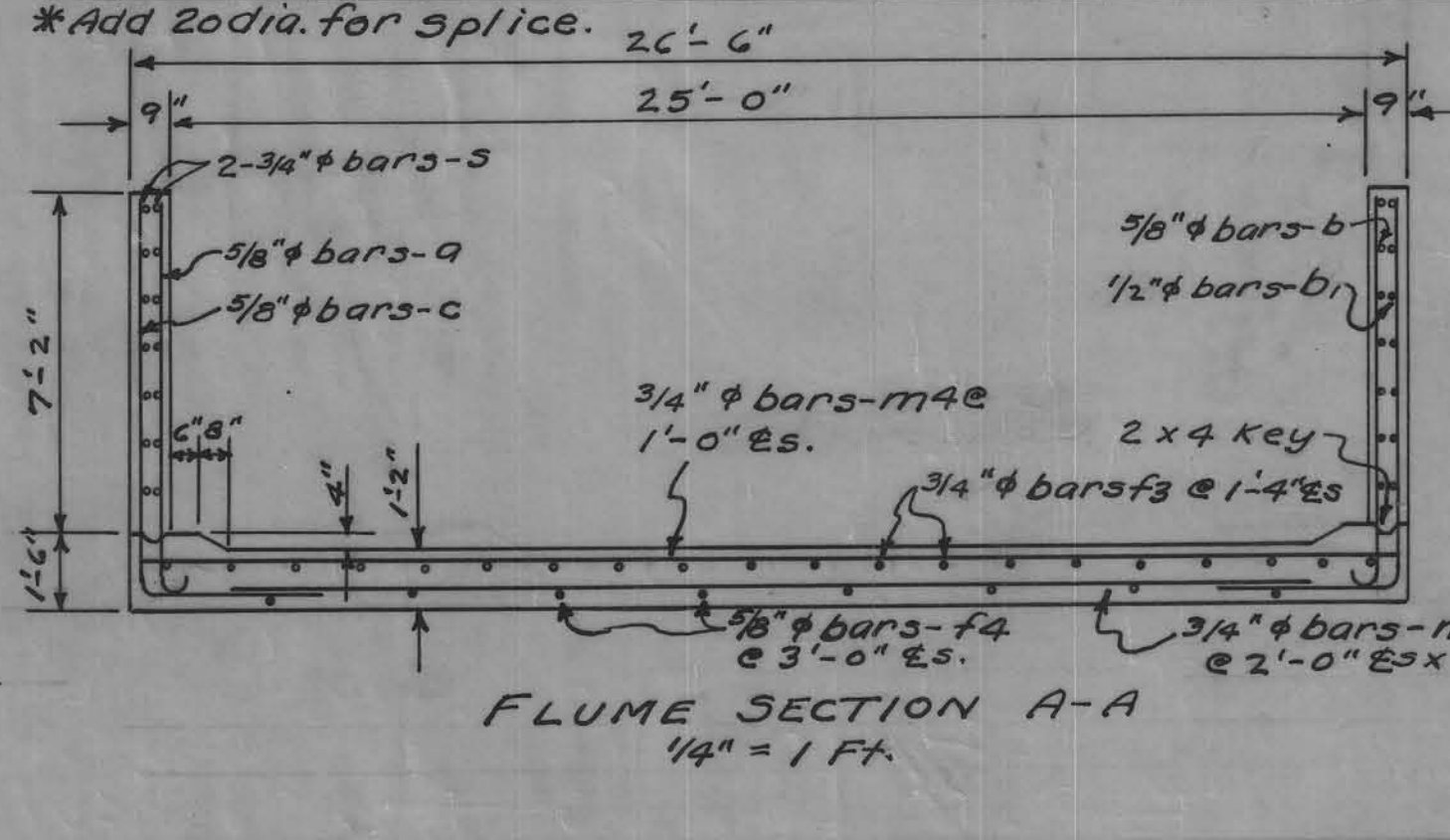


VIEW-OUTLET END OF FLUME  
 1/4" = 1 FT.



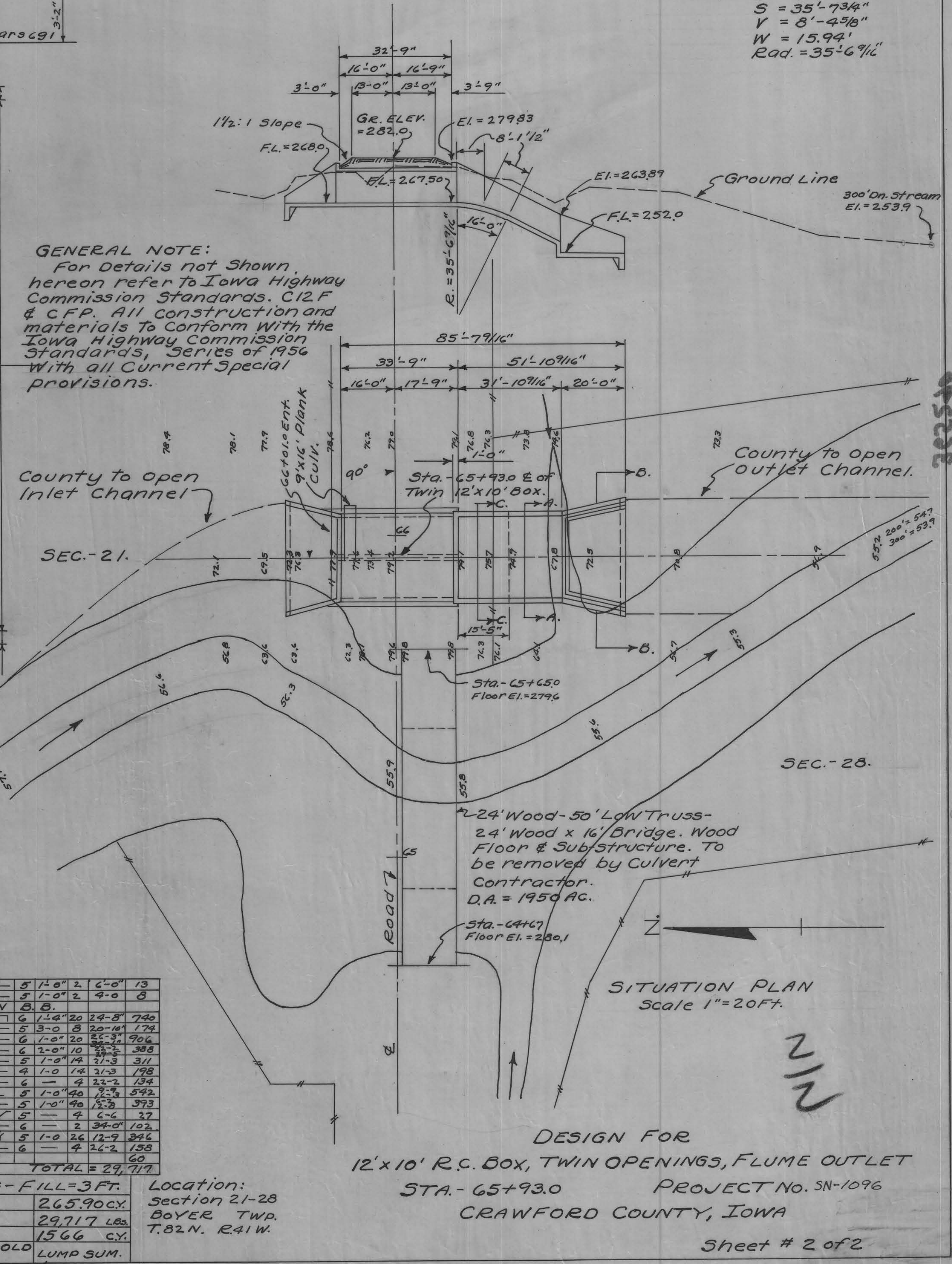
BARREL SECTION  
 1/4" = 1 FT.

Mark	Location	Shape	Spac.	No.	Length	Lbs.	Mark	Location	Shape	Spac.	No.	Length	Lbs.	
"	HEADWALL SECTION	"	"	"	"	"	b3	Walls Longt.	"	5	2-0"	11	34-8	398
C	"	"	"	"	"	"	e	Slab Lg. bot.	"	6	1-4"	16	"	834
C1	"	"	"	"	"	"	e1	"	"	4	"	6	"	138
C2	"	"	"	"	"	"	f	Floor " top	"	6	1-4"	20	34-0	1022
C3	"	"	"	"	"	"	f2	"	"	4	"	2	35-0	47
C4	"	"	"	"	"	"	k	Slab trans. bot.	"	8	0-8 1/2"	49	26-8	3470
d	Floor ends	"	"	"	"	"	k1	" Corner	"	5	1-0"	66	8-0	551
C1	"	"	"	"	"	"	k2	" trans. top	"	8	0-8 1/2"	46	8-8	1045
f3	"	"	"	"	"	"	m1	Floor trans. top	"	"	"	49	27-8	3620
f1	"	"	"	"	"	"	m1	" bot.	"	"	"	49	8-8	1134
v	Parapet Vert.	"	"	"	"	"	"	FLUME SECTION A-A & C-C	"	"	"	"	"	"
v	" Horiz.	"	"	"	"	"	p3	Floor Lg. top	"	6	1-4"	20	35-3	1071
m2	Floor ends trans	"	"	"	"	"	p4	" bot.	"	5	3-0"	8	"	298
m3	"	"	"	"	"	"	m4	" trans top	"	6	1-0"	32	26-2	1257
p	Curtain Wall	"	"	"	"	"	m5	" bot.	"	6	2-0"	16	21-7	323
s	Wing Slope	"	"	"	"	"	b	Walls Lg. front	"	5	1-0"	12	38-4	480
s1	"	"	"	"	"	"	b1	" back	"	4	1-0"	12	"	307
t	Curtain Wall	"	"	"	"	"	s	" top	"	6	"	4	"	230
u	"	"	"	"	"	"	o3	" Vert. front	"	5	1-0"	24	10-0	385
u	"	"	"	"	"	"	o1	"	"	6	"	30	18-8	372
u	"	"	"	"	"	"	o2	"	"	6	"	28	8-2	112
u	"	"	"	"	"	"	o2	"	"	5	"	34	13-0	461
u	"	"	"	"	"	"	c5	"	"	5	"	30	13-8	466
u	"	"	"	"	"	"	c6	"	"	4	"	28	12-3	175
u	"	"	"	"	"	"	b	" Lg. front	"	5	"	2	10-0	21
u	"	"	"	"	"	"	b	"	"	5	"	2	8-0	17



FLUME SECTION A-A  
 1/4" = 1 FT.

GENERAL NOTE:  
 For Details not Shown,  
 hereon refer to Iowa Highway  
 Commission Standards. C12 F  
 & CFP. All construction and  
 materials to conform with the  
 Iowa Highway Commission  
 Standards, Series of 1956  
 with all current special  
 provisions.



SITUATION PLAN  
 Scale 1" = 20 FT.

Location:	Section 21-28
CONCRETE	265.90 CY.
REIN. STEEL	29,717 LBS.
EXCAVATION	1566 CY.
REMOVAL OF OLD STRUCTURE	LUMP SUM.

DESIGN FOR  
 12'x10' R.C. BOX, TWIN OPENINGS, FLUME OUTLET  
 STA. - 65+93.0 PROJECT No. SN-1096  
 CRAWFORD COUNTY, IOWA  
 Sheet # 2 of 2