

STATE OF IOWA
 STATE HIGHWAY COMMISSION
 DESIGN FOR
 125' x 24' 3-SPAN CONTINUOUS CONCRETE SLAB BRIDGE
 FARM TO MARKET SYSTEM PROJECT - 5218 (3)
 CRAWFORD COUNTY
 MARCH 1960

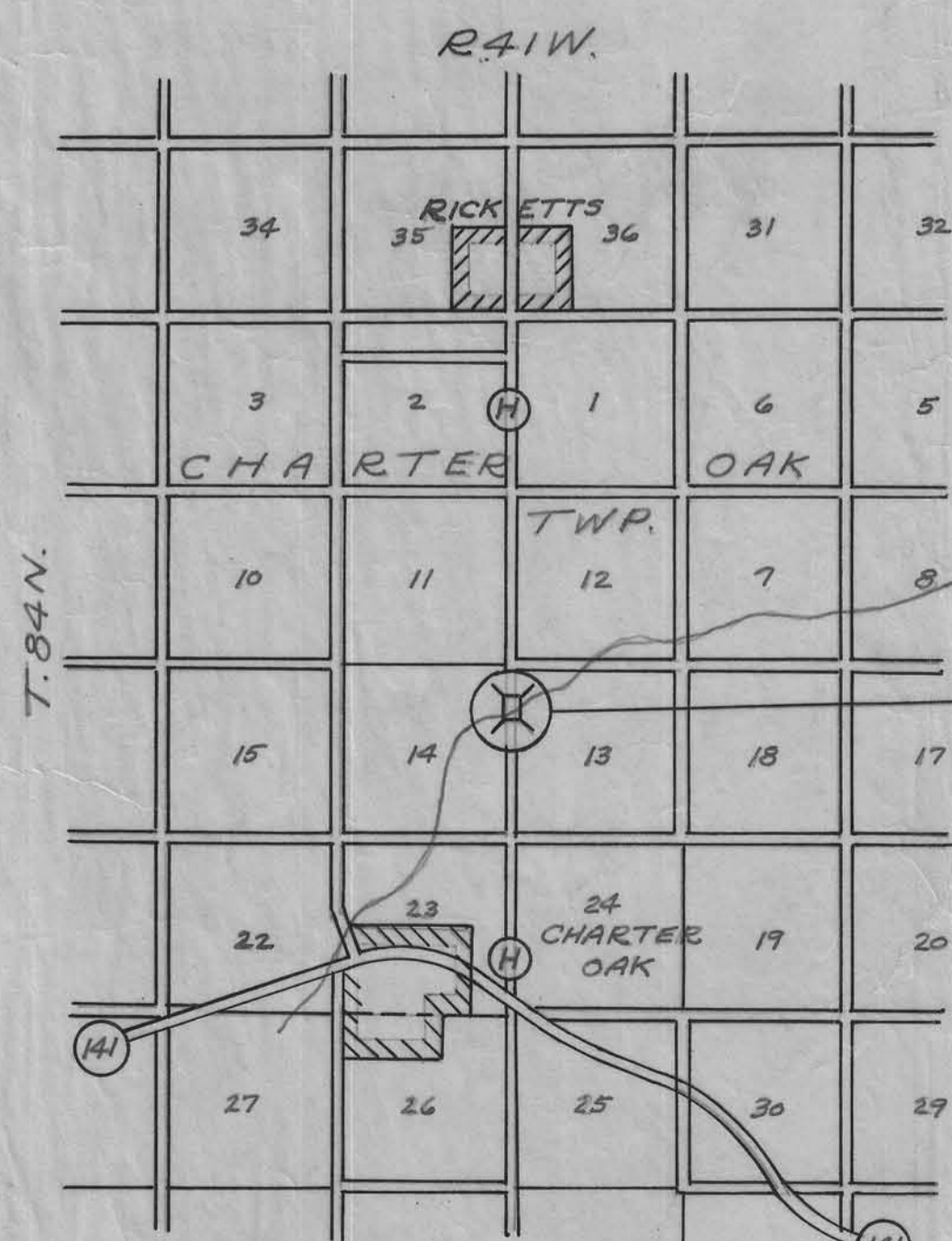
MILEAGE SUMMARY := 126'-8" = 0.02399 MILES

SPECIFICATIONS:
 Design: A.A.S.H.O. Series of 1953.
 Construction: Standard Specifications of the Iowa State Highway Commission, Series of 1960, with current Special Provisions applicable.
 This bridge to be built according to the I.S.H.C. Std. J6 except that concrete is to be Class "S".

DESCRIPTION	ABUTMENTS		SUPERSTRUCTURE		TOTAL	
CONCRETE class - #5	32	C.Y.	182	C.Y.	214	C.Y.
REIN. STEEL	2452	LBS.	43,975	LBS.	46,427	LBS.
STRUCT. STEEL			Includes Rail 6,450	LBS.	6,450	LBS.
TREATED WOOD PILES	8@40', 8@45' = 680'				680	L.F.
PIA 16" TYPE III or IV PILING			6-16" # @ 45' = 270 L.F.			
			6-16" # @ 50' = 300 L.F.		570	L.F.
EXCAVATION class # 20	75	C.Y.			75	C.Y.
" class # 10	2,520	C.Y.			2,520	C.Y.
REMOVAL OF OLD STRUCTURE (Including Abuts. & Pier)					LUMP SUM	

NOTE: Bridge Sign Assemblies Will be furnished & placed by Crawford County to conform with S. & T. Instruction No. 11, revised March-1, 1956.

Crawford 5-218(3) Bridge



DESIGN No. - 1060
 PROJECT No. 5218(3)

LOCATION MAP
 SCALE 1" = 1 MILE

Revised 5-16-60: Concrete classification corrected and note added to Specifications. Elevations changed on Sheet 2.

APPROVED

BOARD OF SUPERVISORS. DATE

APPROVED

R.M. Tuttle
 April 12, 1960
 CHIEF ENGINEER DATE
 IOWA HIGHWAY COMMISSION

DEPARTMENT OF COMMERCE
 BUREAU OF PUBLIC ROADS

RECOMMENDED FOR APPROVAL

DISTRICT ENGINEER DATE

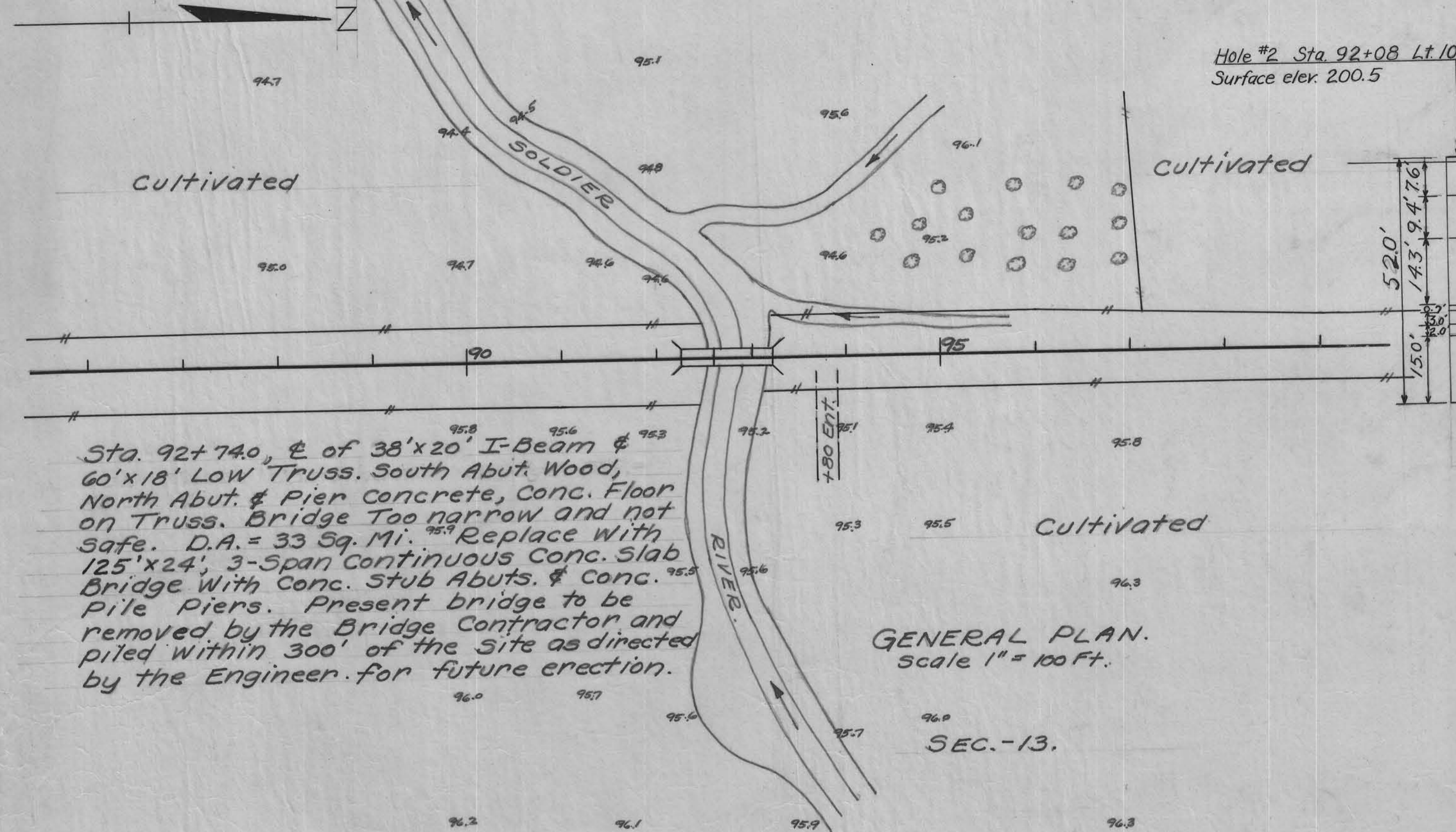
APPROVED

DIVISION ENGINEER

File # 21066



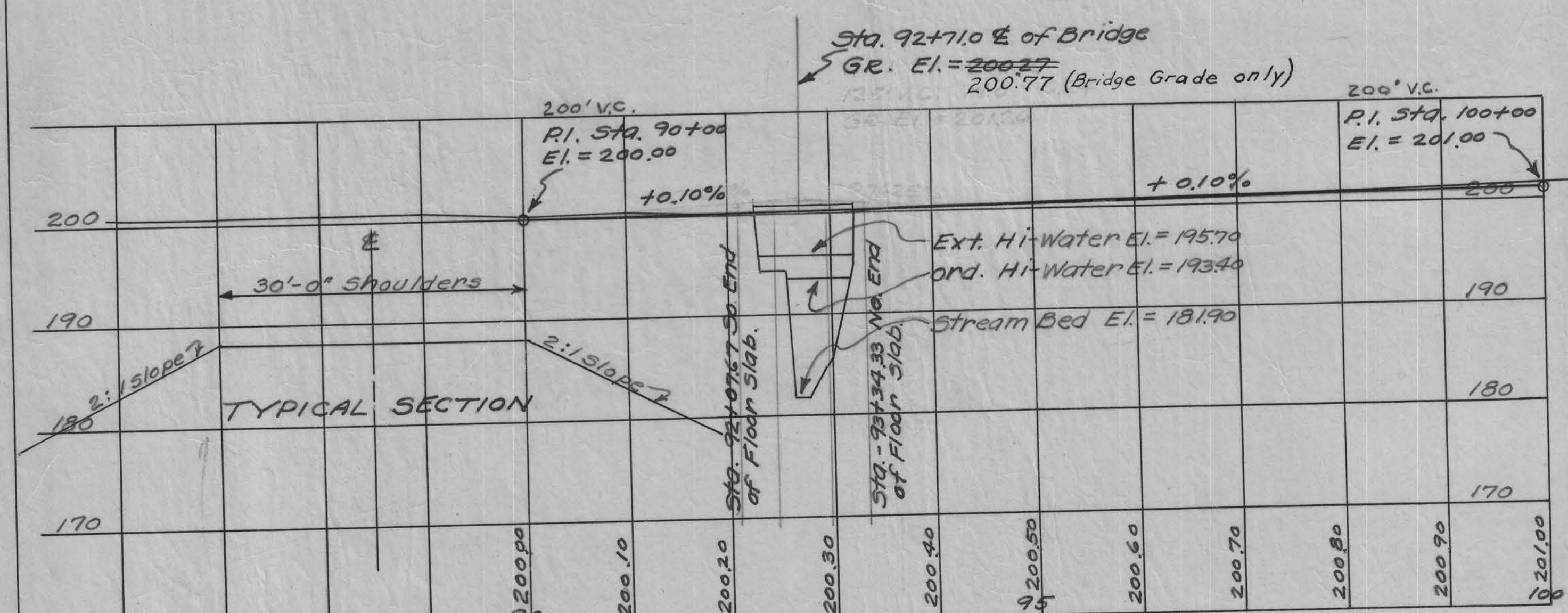
CHARTER OAK TOWNSHIP
T.84N. SEC.-14. R.41W.



Sta. 92+740, E of 38'x20' I-Beam & 60'x18' Low Truss. South Abut. Wood, North Abut. & Pier Concrete, Conc. Floor on Truss. Bridge Too narrow and not safe. D.A. = 33 Sq. Mi. Replace With 125'x24', 3-Span Continuous Conc. Slab Bridge With Conc. Stub Abuts. & Conc. Pier Piers. Present bridge to be removed by the Bridge Contractor and piled within 300' of the Site as directed by the Engineer for future erection.

GENERAL NOTES:

All exposed corners of 90° or sharper are to be filleted 3/4".
All reinforcing bars are to be securely wired in place and adequately supported on bar chairs before concrete is placed.
For details of Abutments & Piers refer to Iowa Highway Standard JG-2, except pier piles to be P10A 16" Type III or IV as on Standard P10A. For super-structure see Standard JG-1.
All construction to be in accordance with the Iowa Highway Commission Standards, Series of 1960 with current Special Provisions applicable.



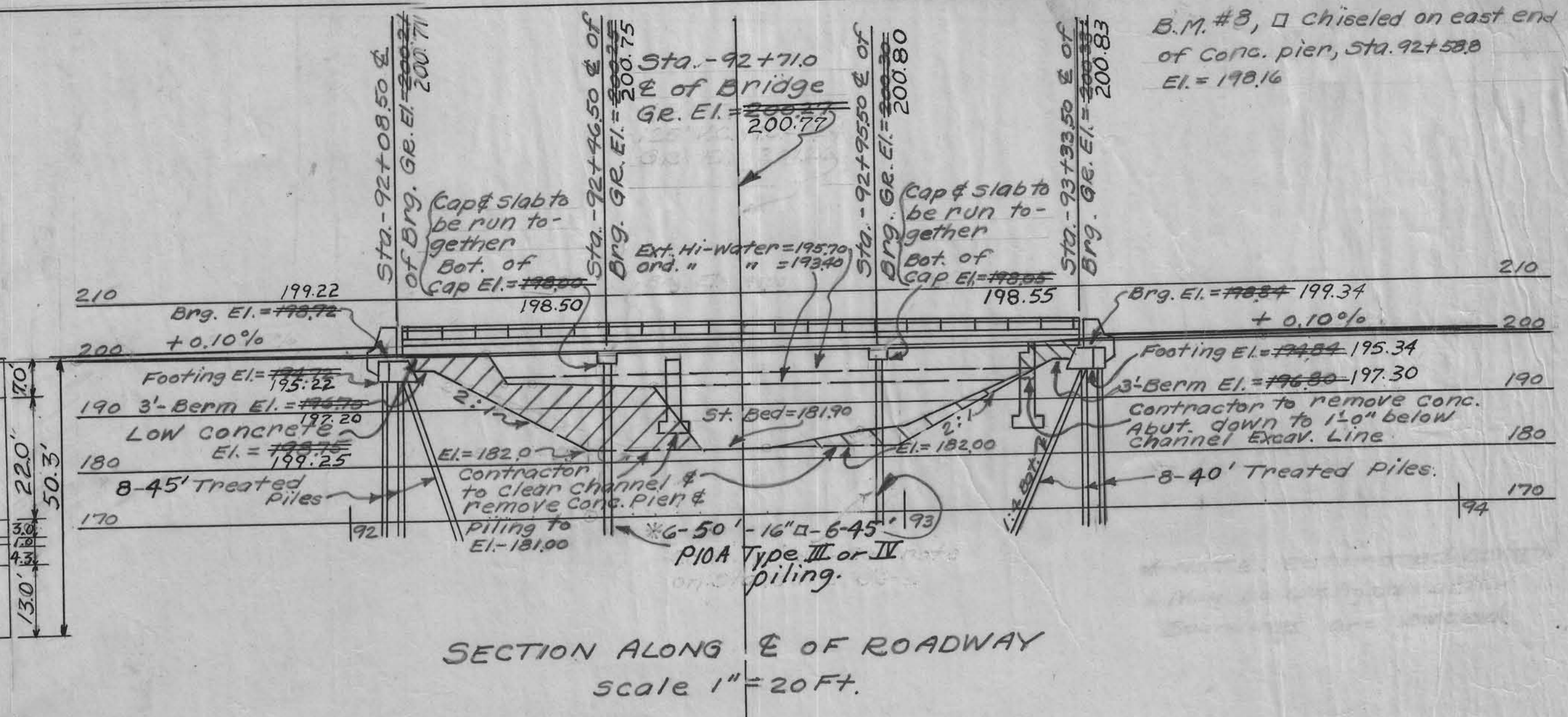
ROAD PROFILE
Vert.: 1" = 10 Ft.
Scale Horiz.: 1" = 100 Ft.

Revised 5-16-60: All bridge elevations raised 6" due to 6" raise in bridge grade line.

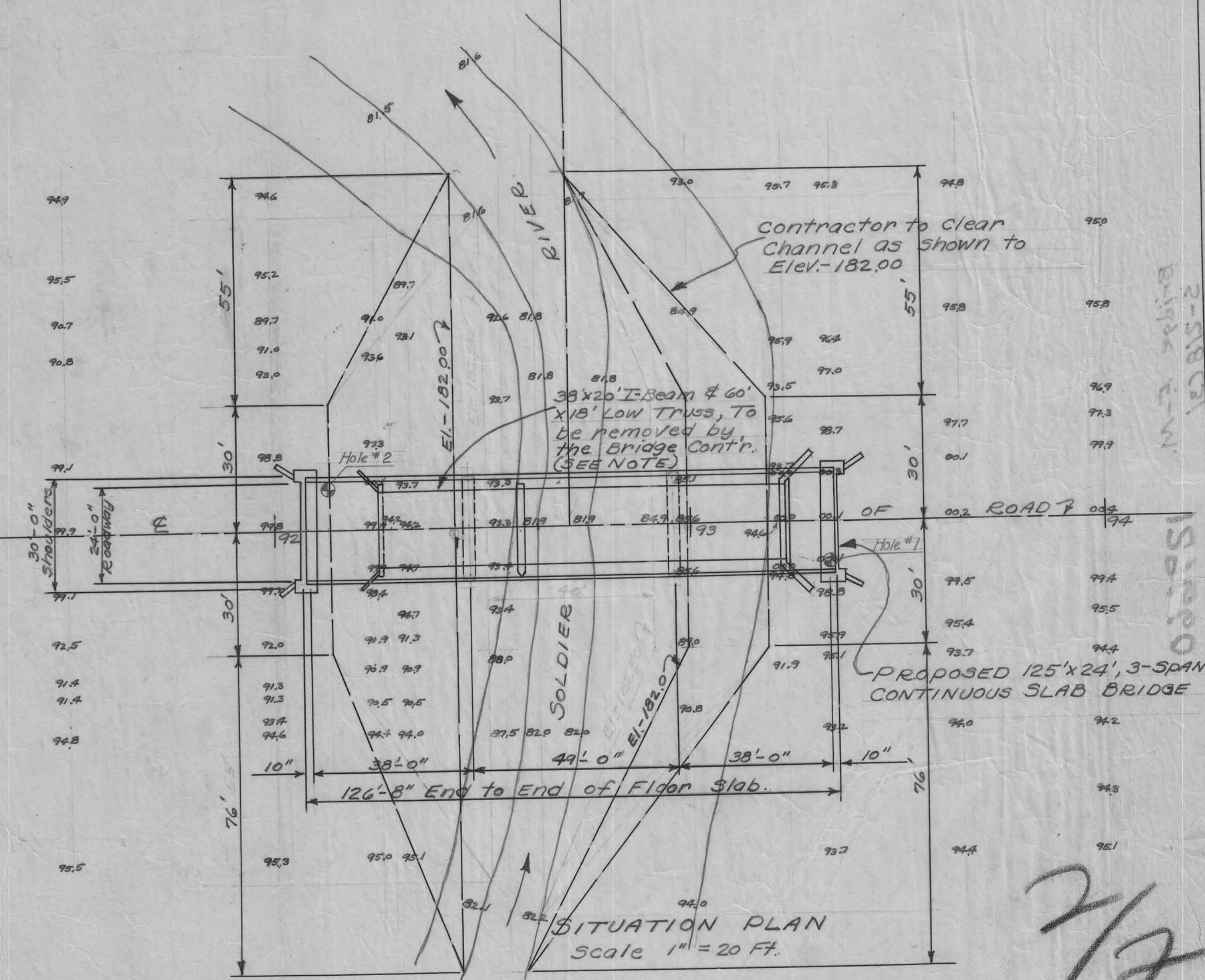
Hole #2 Sta. 92+08 Lt. 10'
Surface elev. 200.5

Hole #1 Sta. 93+33 Rt. 10'
Surface elev. 200.6

SOUNDING DATA



SECTION ALONG E OF ROADWAY
Scale 1" = 20 Ft.



DRAINAGE AREA = 33 Sq. Mi.

DESIGN FOR
125'-0" x 24', 3-SPAN CONTINUOUS SLAB BRIDGE
CONCRETE FLOOR - STEEL HANDRAIL

Location: Section: 13-14 Charter Oak TWP. T.84N. R.41W.
STA: 92+71.0 PROJECT No. 5218(3)
CRAWFORD COUNTY, IOWA.

Sheet # 2 of 2