

STATE	FED. ROAD DIST. NO.	FISCAL YEAR	SHEET NO.	TOTAL SHEETS
IOWA	8	1975	1	2
PROJECT NUMBER				
SRS-0005(60)--87-24				
R.O.W. PROJECT NUMBER				

IOWA
DEPARTMENT OF TRANSPORTATION
Highway Division

PLANS OF PROPOSED IMPROVEMENT ON THE
SECONDARY ROAD SYSTEM
CRAWFORD COUNTY

100'-0" x 24'-0" CONTINUOUS CONCRETE SLAB BRIDGE
(20° SKEW)
PROJECT NO. SRS-0005(60)--87-24

SCALES AS NOTED

IOWA STATE HIGHWAY COMMISSION STANDARD SPECIFICATIONS SERIES 1972 PLUS CURRENT SPECIAL PROVISIONS AND SUPPLEMENTAL SPECIFICATIONS OF THE IOWA DEPARTMENT OF TRANSPORTATION--HIGHWAY DIVISION SHALL APPLY TO WORK ON THIS PROJECT.

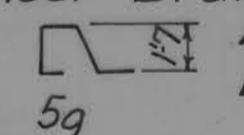
INDEX OF SHEETS

SHEET NO.	ITEM
1	TITLE PAGE, MILEAGE SUMMARY, ESTIMATE OF QUANTITIES
2	GENERAL PLAN

MILEAGE SUMMARY
100'-0" = 0.01894 MILE

IOWA STATE HIGHWAY COMMISSION STANDARDS REQUIRED (MAY BE OBTAINED @ BRIDGE DESIGN SERVICES)

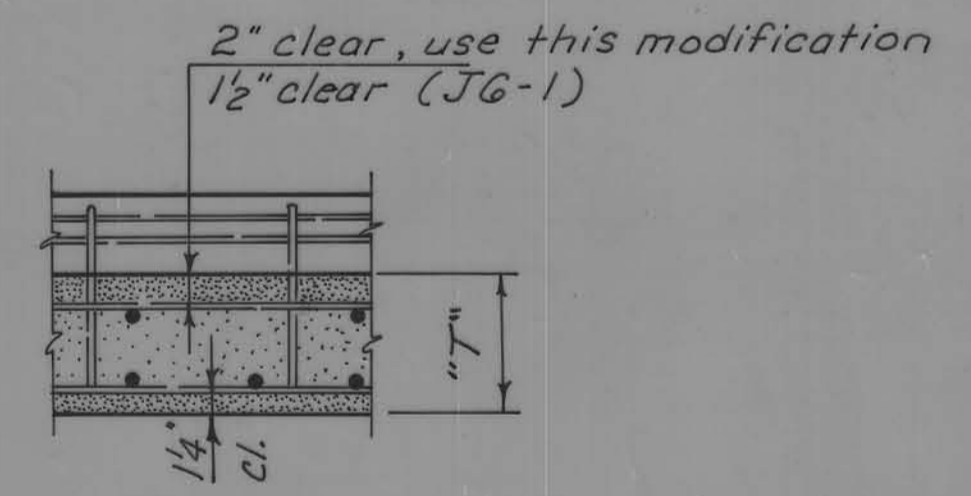
STANDARD	DATE ISSUED	LATEST REVISION
① J6-1	JUNE 1957	5-7-68
② J6-2	JUNE 1957	5-7-68
J6-3	AUGUST 1967	3-6-74
PIOA	JUNE 1959	6-12-72

Modifications to above Standards
 ① Dimension "T" = 1'-3 1/2" Structural Concrete (Class D) = +4.1 c.y.
 Dimension "D" = 1'-11 1/2" Floor Drain Weight = +6 lbs.
 Reinforcing; Curb Anchors  Length = 4'-7" Weight = 937 lb. (+17 lb.)
 5g
 ② Dimension "A" = 1'-3 3/8"
 Dimension "B" = 1'-11 1/2"

PROJECT NO. SRS-0005(60)--87-24		DESIGN 676	STA. 8+75.0		
BETWEEN SEC. 23 & 24		CRAWFORD COUNTY	CHARTER OAK TOWNSHIP		
100'-0" x 24'-0" CONTINUOUS CONCRETE SLAB BRIDGE (20° SKEW)					
ITEM NO.	ITEM	UNIT	ABUTMENTS	SUPERSTRUCTURE	TOTALS
1	STRUCTURAL CONCRETE	CU.YDS.	32.6	131.2	163.8
2	REINFORCING STEEL	LBS.	2426	29432	31858
3	CREOSOTED PILES 16@35'	L.F.	560		560
4	CONCRETE PILES PIOA 16" TYPE II @ 45'	L.F.		450	450
5	ALUMINUM RAILING	L.F.		204.7	204.7
6	EXCAV. CLASS 10 CHANNEL	CU.YDS.			6,955
7	EXCAV. CLASS 20	CU.YDS.	90		90
8	CLEARING & GRUBBING	%SCH.			\$46.35
9	REMOVAL OF EXISTING STRUCTURE	LUMP SUM			LUMP SUM
10	REVETMENT, CLASS D-RIP RAP	TONS			375

ITEM NO. 1 THE FLOOR, CURBS, AND WING POSTS (132.0 CU.YDS.) ARE TO BE CLASS "D" CONCRETE. THE REMAINDER (31.8 CU.YDS.) ARE TO BE CLASS "C" CONCRETE.
 ITEM NO. 4 CAP STEEL REQUIRED.
 ITEM NO. 10 CLASS 21 EXCAVATION (22 CU.YDS.) SHALL BE CONSIDERED INCIDENTAL TO COST OF REVETMENT.

885



MODIFICATION DETAIL

APPROVED

Eileen Seiden

Charles J. Smith

LeRoy A. Hansohn

Don H. Jensen

Sam Kruse

BOARD OF SUPERVISORS

DISTRICT PLANNING ENGINEER
IOWA DEPT. OF TRANSPORTATION
HIGHWAY DIVISION

APPROVED _____ DATE _____

DEPARTMENT OF TRANSPORTATION
IOWA
Highway Division

APPROVED *LeRoy A. Hansohn* 6/11/76
DEPUTY CHIEF ENGINEER DATE

I HEREBY CERTIFY THAT THIS PLAN WAS PREPARED UNDER MY SUPERVISION AND THAT ENGINEERING DECISIONS WITH REGARD TO THE DESIGN WERE MADE BY ME OR BY OTHER DULY REGISTERED PROFESSIONAL ENGINEERS UNDER THE LAWS OF THE STATE OF IOWA.

H. Dale Wright Feb 2, 1976
IOWA REGISTRATION NUMBER 5798 DATE

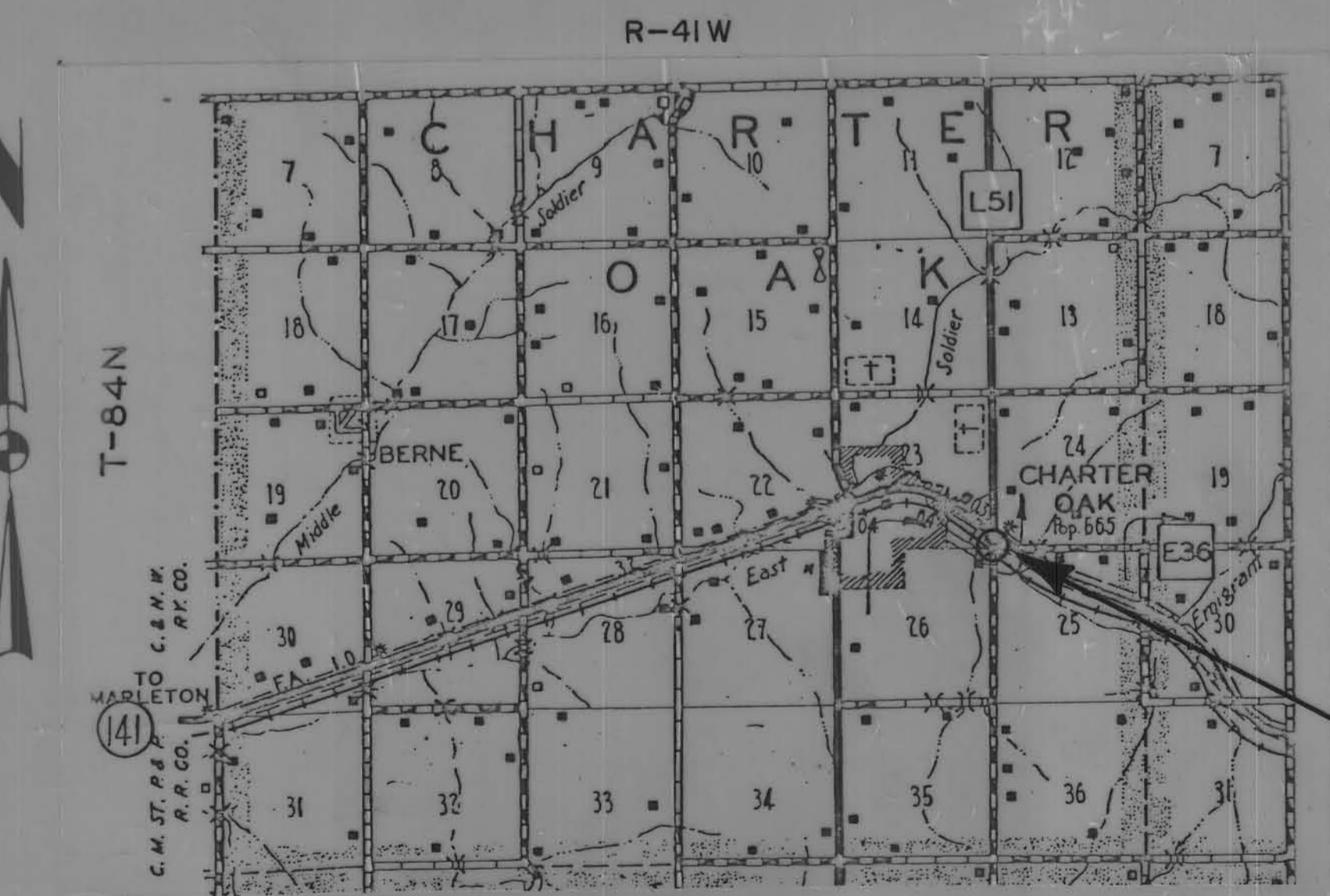
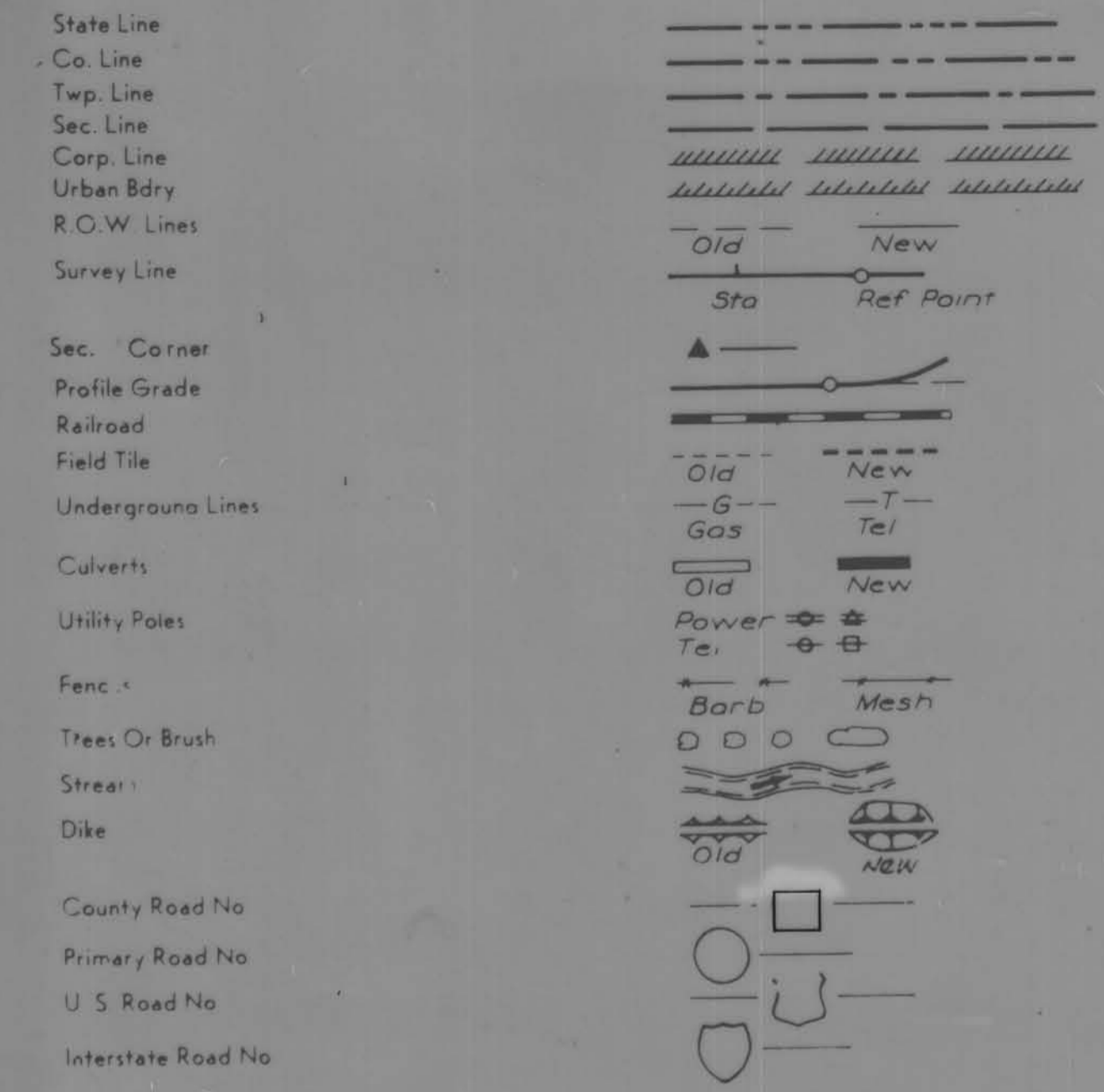
U.S. DEPT. OF TRANSPORTATION
FEDERAL HIGHWAY ADMINISTRATION

APPROVED _____ DATE _____

DIVISION ENGINEER DATE

MASTERS PRINTED

CONVENTIONAL SIGNS



LETTING DATE
JULY 20, 1976

(1971) TRAFFIC COUNT 50 V.P.D.

FILE NO. 50406 DESIGN NO. 676

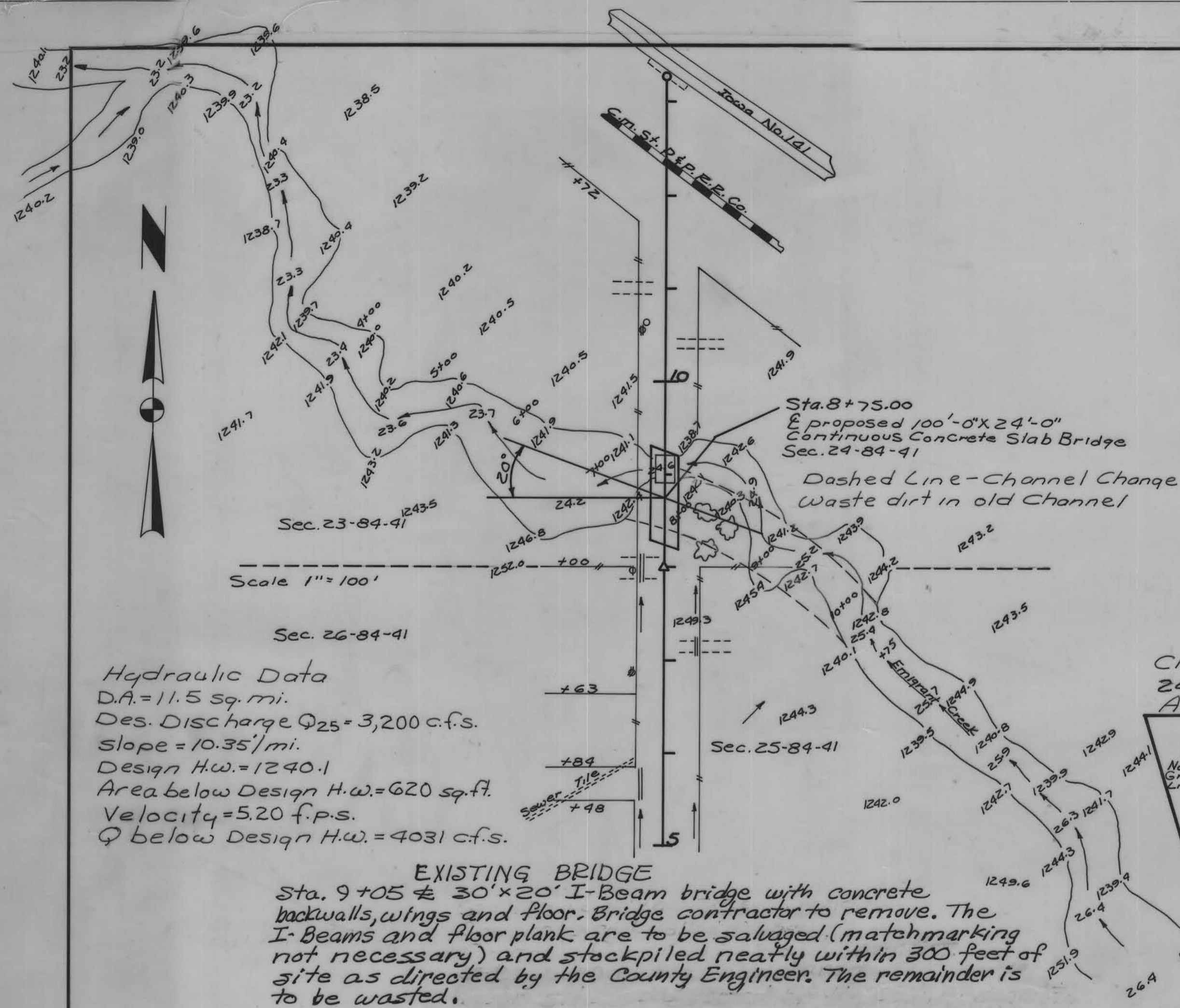
CRAWFORD COUNTY

PROJECT NO. SRS-0005(60)--87-24

SHEET NO. 1 of 2

PROJECT NO. SRS-0005(60)--87-24 BRIDGE

CRAWFORD COUNTY



Bottom South abutment on \bar{C} Elev. = 1241.24
 Bottom South abutment @ exterior pile Lt. Elev. = 1241.12
 Bottom South abutment @ exterior pile Rt. Elev. = 1241.36
 Berm Elev. = 1243.3

Bottom Cap, South pier on \bar{C} Elev. = 1243.76
 Bottom Cap, South pier @ exterior pile Lt. Elev. = 1243.67
 Bottom Cap, South pier @ exterior pile Rt. Elev. = 1243.85

Bottom Cap, North pier on \bar{C} Elev. = 1243.12
 Bottom Cap, North pier @ exterior pile Lt. Elev. = 1243.07
 Bottom Cap, North pier @ exterior pile Rt. Elev. = 1243.17

Bottom North abutment on \bar{C} Elev. = 1239.60
 Bottom North abutment @ exterior pile Lt. Elev. = 1239.57
 Bottom North abutment @ exterior pile Rt. Elev. = 1239.63
 Berm Elev. = 1241.7

Sta. 8+68.5 \bar{C} grade elev. = 1245.59
 Sta. 8+81.5 \bar{C} grade elev. = 1245.38
 Sta. 9+04.67 \bar{C} grade elev. = 1245.09
 Sta. 9+14.83 \bar{C} grade elev. = 1244.99

Class 10 Excav. and berm construction shall be completed 24' each side of \bar{C} of roadway prior to construction of bridge.
 All channel excavation by Bridge Contractor.

