

INDEX OF SHEETS

SHEET NO.	ITEM
1	TITLE PAGE INCLUDING CONVENTIONAL SIGNS, LOCATION MAP, ESTIMATE OF QUANTITIES, STANDARDS, MILEAGE SUMMARY.
2	PLAN AND PROFILE SHEET
3	DETAILS

MILEAGE SUMMARY

103- 5 1/8" = 0.01960 MI.

IOWA STATE HIGHWAY COMMISSION STANDARDS REQUIRED (MAY BE OBTAINED @ BRIDGE DESIGN SERVICES)		
STANDARD	DATE ISSUED	LATEST REVISION
J16-70	JUNE 1969	7-28-72
J16-3-70	JUNE 1969	6-8-72
J16-6-70	JUNE 1969	6-8-72
J16-7-70	JUNE 1969	6-8-72
J16-11-70	JUNE 1969	7-28-72
J16-15-70	JUNE 1969	6-8-72
PIOA	JUNE 1969	6-12-72

STATE OF IOWA STATE HIGHWAY COMMISSION

PLANS OF PROPOSED IMPROVEMENT
ON THE

FARM TO MARKET SYSTEM

CRAWFORD COUNTY

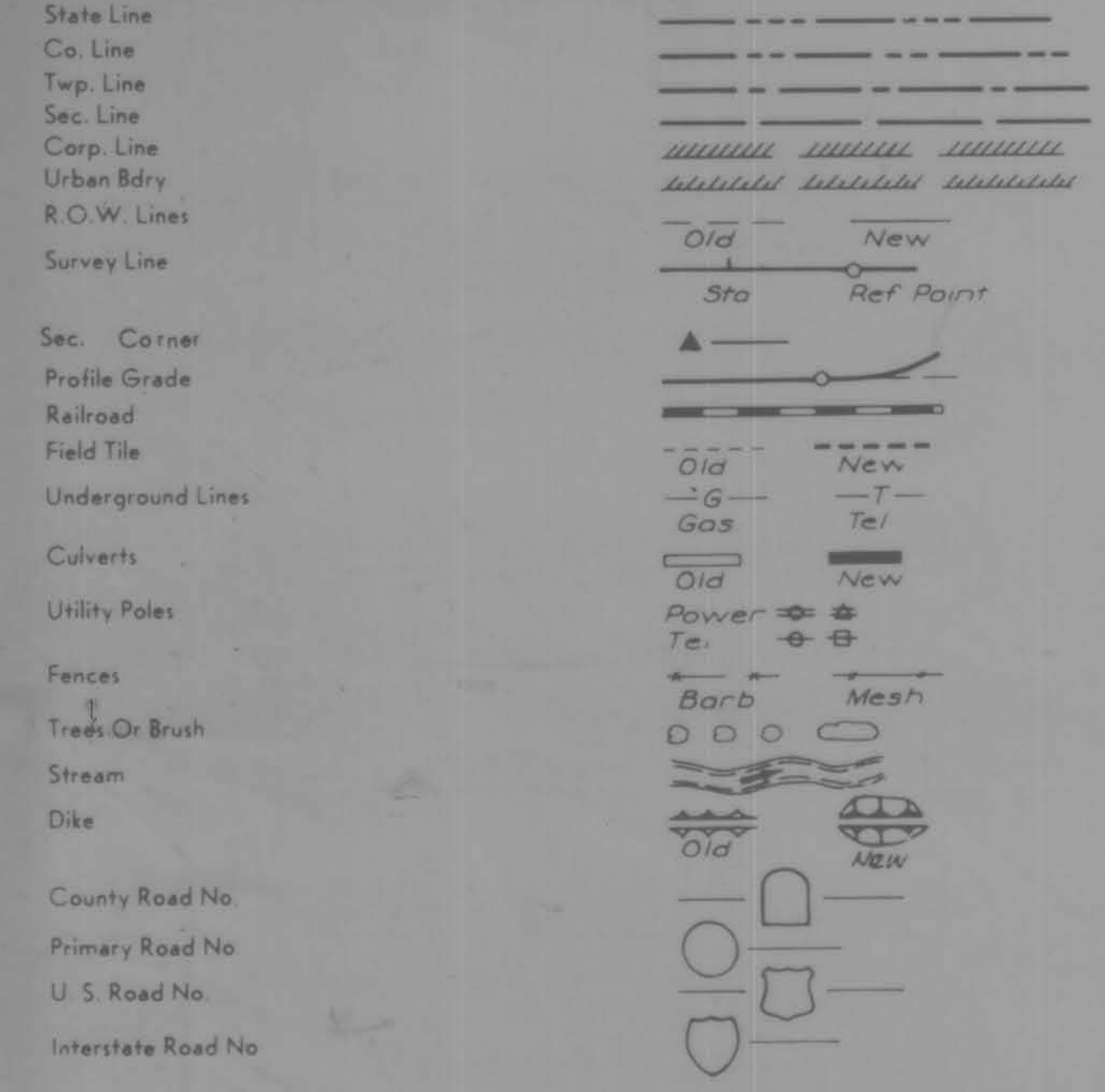
PROJECT NO. RS-1945(2)--61-24

DESIGN FOR 100'-0" X 30'-0" (30° SKEW) CONTINUOUS CONCRETE SLAB BRIDGE

SCALES: AS NOTED

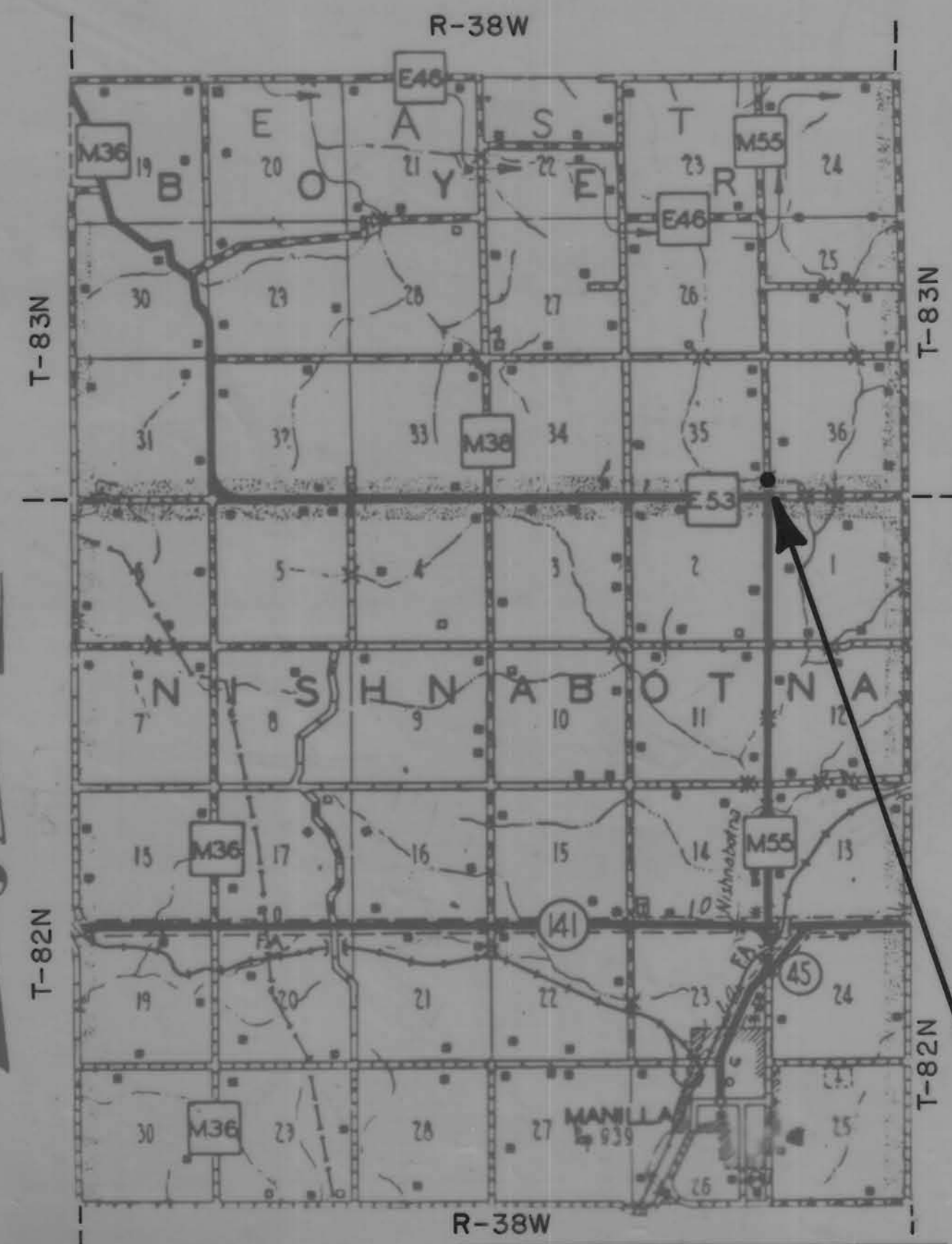
THE IOWA STATE HIGHWAY COMMISSION STANDARD SPECIFICATIONS
FOR CONSTRUCTION WORK, SERIES OF 1972 SHALL
APPLY TO WORK ON THIS PROJECT, PLUS
CURRENT SUPPLEMENTAL SPECIFICATIONS AND SPECIAL PROVISIONS.

CONVENTIONAL SIGNS



PROJECT NO. RS-1945(2)--61-24		STA. 6+35.5			
BETWEEN SEC. 35 & 36		EAST BOYER TOWNSHIP			
100'-0" X 30'-0" CONTINUOUS CONCRETE SLAB BRIDGE (30° SKEW)					
ESTIMATE OF QUANTITIES					
ITEM NO.	ITEM	UNITS	ABUTMENTS	SUPERSTRUCTURE	TOTALS
1	STRUCTURAL CONCRETE	C.Y.	37.4	193.3	230.7
2	REINFORCING STEEL	LBS.	4756	47,198	51,954
3	CREOSOTED PILES 7 AT 40' 7 AT 45'	L.F.	595		595
4	CONCRETE PILES 16 AT 45' PIOA 16" TYPE IV	L.F.		720	720
5	ALUMINUM RAILING	L.F.		196.6	196.6
6	EXCAV. CLASS 10 CHANNEL	C.Y.			3570
7	EXCAV. CLASS 10 RDWY. & BORROW	C.Y.			2832
8	EXCAV. CLASS 20	C.Y.	36		36
9	REMOVAL OF EXISTING STRUCTURE	LUMP SUM			LUMP SUM

IN LETTING OF JUNE 24, 1975



ITEM NO. 1 193.3 CU. YDS. CLASS 'D' CONCRETE FOR SUPERSTRUCTURE AND 37.4 CU. YDS. CLASS 'C' CONCRETE FOR SUBSTRUCTURE.

ITEM NO. 7 INCLUDES EXCAVATION FOR CONSTRUCTION OF WING DIKES 776 CU. YDS. NO OVERHAUL SHALL BE ALLOWED. THE STRIPPING, SALVAGING, & RESPREADING OF 8' OF TOPSOIL ON ALL BORROW AREAS BEYOND 60' ROW SHALL BE CONSIDERED INCIDENTAL TO THE BID PRICE OF CLASS 10 ROADWAY & BORROW.

STA. 6+35.5 @ 100'-0" X 30'-0" (30° SKEW)
CONCRETE SLAB BRIDGE
DESIGN NO. 475
RS-1945(2)--61-24

APPROVED

Vern Kerner

Charles J. Smith

Eileen Liden

Don H. Jensen

LeRoy A. Hansohn
BOARD OF SUPERVISORS

APPROVED
H. Dale Wright May 19, 1975
COUNTY ENGINEER DATE

I HEREBY CERTIFY THAT THIS PLAN WAS PREPARED UNDER MY SUPERVISION AND THAT ENGINEERING DECISIONS WITH REGARD TO THE DESIGN WERE MADE BY ME OR BY OTHER DULY REGISTERED PROFESSIONAL ENGINEERS UNDER THE LAWS OF THE STATE OF IOWA.
H. Dale Wright April 17, 1975
IOWA REGISTRATION NUMBER 5798 DATE

APPROVED
DEPARTMENT OF TRANSPORTATION
FEDERAL HIGHWAY ADMINISTRATION
DIVISION ENGINEER DATE

APPROVED
R. L. Owen 6/2/75
DEPUTY CHIEF ENGINEER
IOWA HIGHWAY COMMISSION DATE

1971 TRAFFIC 60 V.P.D.

LETTING DATE: JUNE 24, 1975
CRAWFORD COUNTY PROJECT NO. RS-1945(2)--61-24 BRIDGE

EAST BOYER TOWNSHIP T-83N R-38W SEC. 35

Sta. 0+21.4 Ref. To P.O.T.
1" Iron Pin Edge Fillet
2" Deep.

Sta. 0+00 Govt. Sec. Cor.
Lead Plug. Defl. 0° 08' 1/2" Lt.
24" Con. Pipe Top of Ends of Flared End Sections.

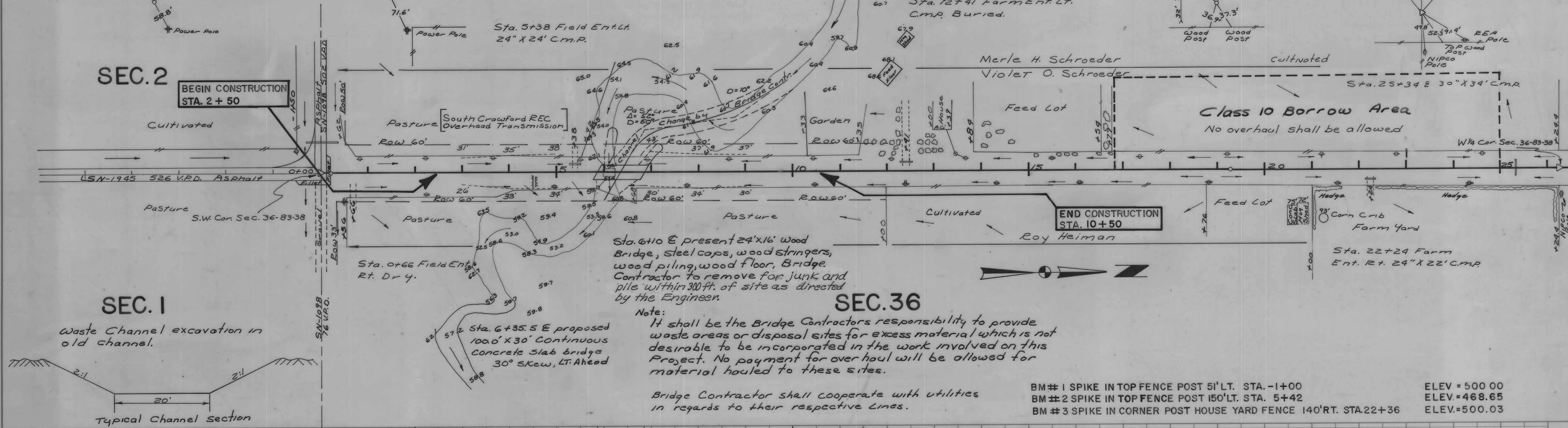
Sta. 19+29.0 Ref. To P.O.T.
1/2" Pin 3" deep.

Sta. 26+24.4 Ref. To P.I.
Gov. Sec. Cor. 18" Deep,
1" Iron Pin over 1" Deep.
Defl. = 0° 00' 1/2" Lt.

SEC. 2

**BEGIN CONSTRUCTION
STA. 2+50**

**END CONSTRUCTION
STA. 10+50**



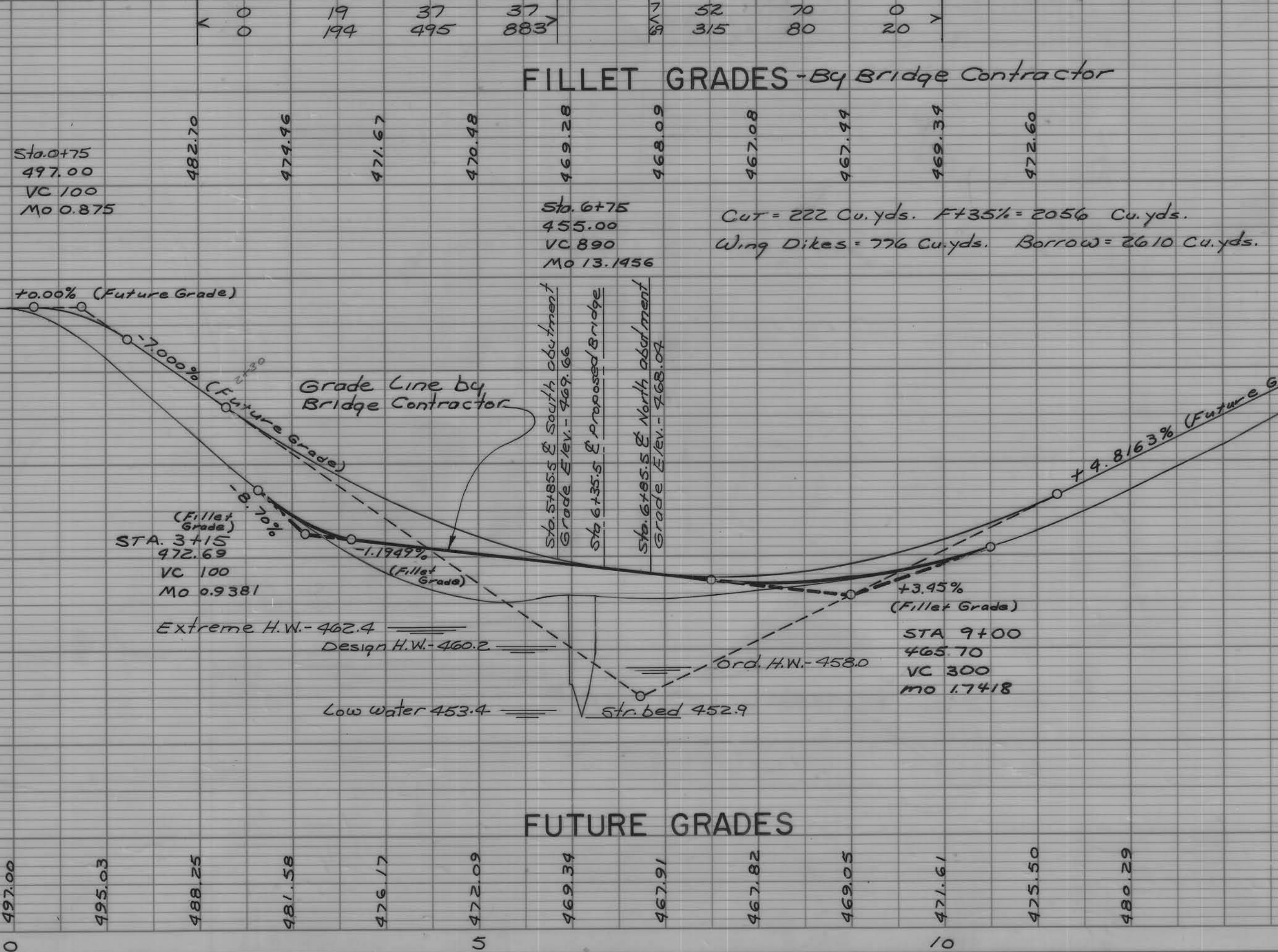
Sta. 6+10 E present 24'x16' Wood Bridge, steel caps, wood stringers, wood piling, wood floor, Bridge Contractor to remove for junk and pile within 300 ft. of site as directed by the Engineer.

Note:
It shall be the Bridge Contractors responsibility to provide waste areas or disposal sites for excess material which is not desirable to be incorporated in the work involved on this Project. No payment for overhaul will be allowed for material hauled to these sites.

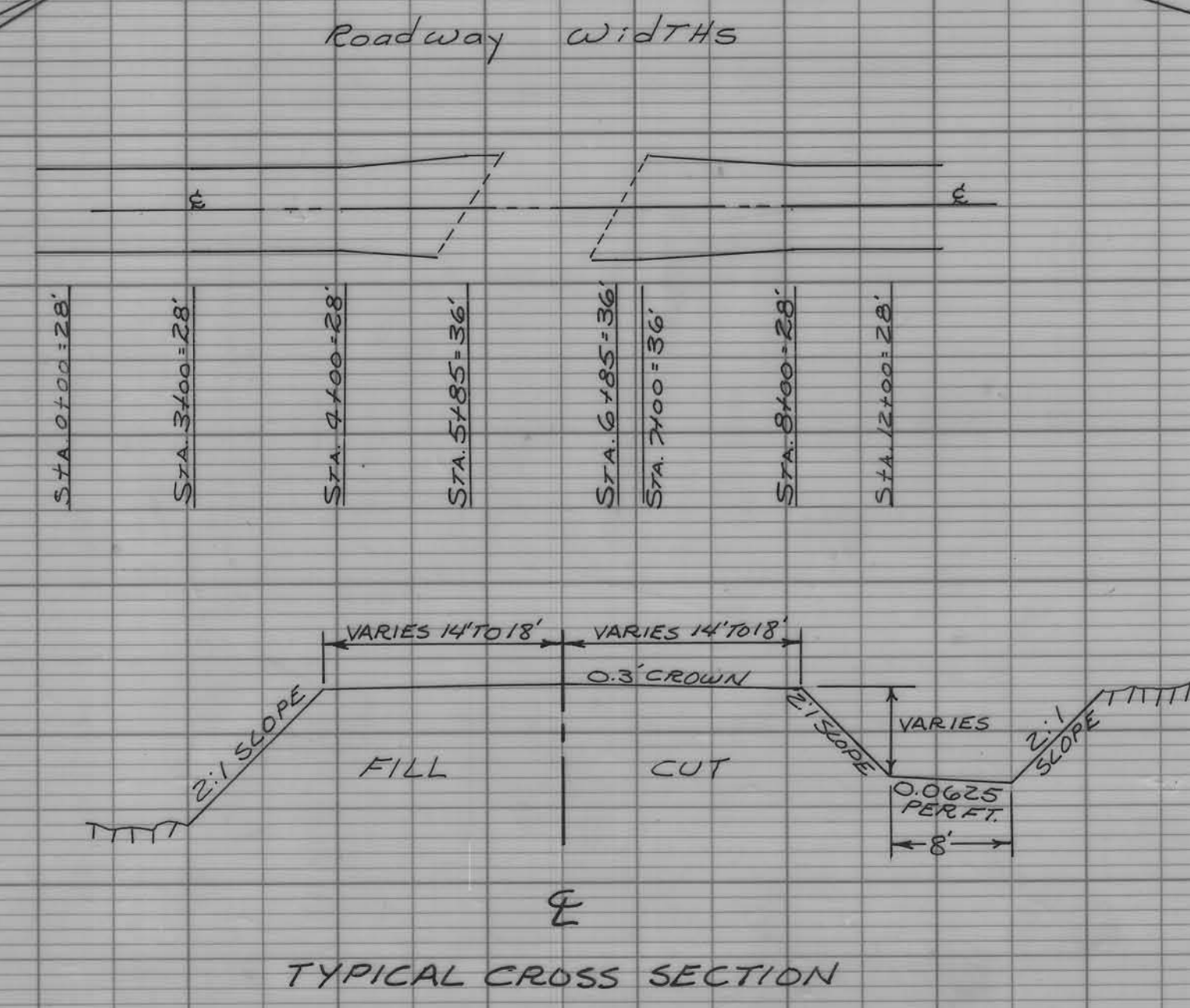
Bridge Contractor shall cooperate with utilities in regards to their respective Lines.

BM #1 SPIKE IN TOP FENCE POST 51' LT. STA. -1+00 ELEV = 500.00
 BM #2 SPIKE IN TOP FENCE POST 150' LT. STA. 5+42 ELEV = 468.65
 BM #3 SPIKE IN CORNER POST HOUSE YARD FENCE 140' RT. STA. 22+36 ELEV = 500.03

FILLET GRADES - By Bridge Contractor



FUTURE GRADES



BM #2 spk in Top fence Post 150' Lt. Sta. 5+42 Elev. - 468.65

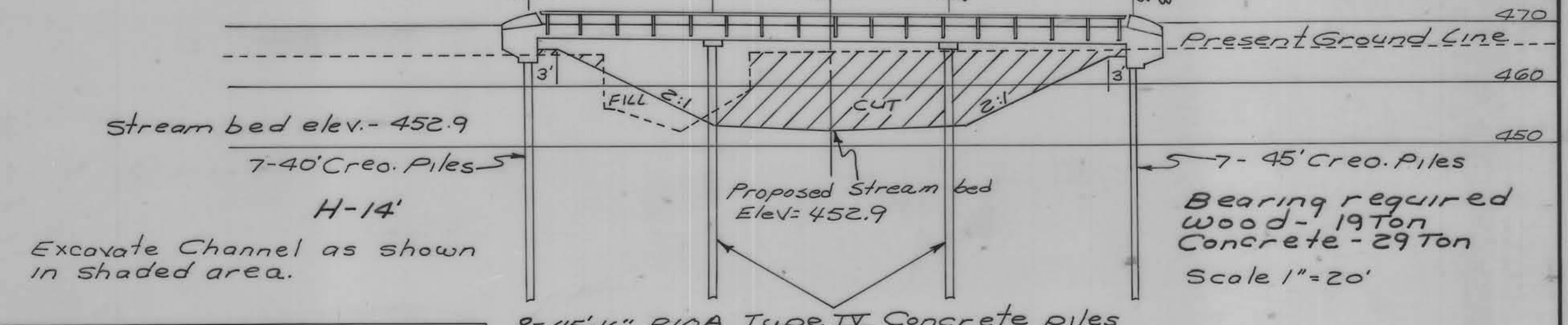
Bottom south abut. on E Elev. - 463.98
 Bottom south abut. @ exterior pile Lt. Elev. - 463.84
 Bottom south abut. @ exterior pile Rt. Elev. - 464.12
 South abut. exterior Pile Lt. cut off Elev. - 465.84
 South abut. exterior Pile Rt. cut off Elev. - 466.12
 Berm Elev. - 466.0

Bottom Cap, South pier on E Elev. - 466.77
 Bottom Cap, South pier @ exterior pile Lt. Elev. - 466.46
 Bottom Cap, South pier @ exterior pile Rt. Elev. - 466.72
 South Cap exterior Pile Lt. cut off Elev. - 467.46
 South Cap exterior Pile Rt. cut off Elev. - 467.72

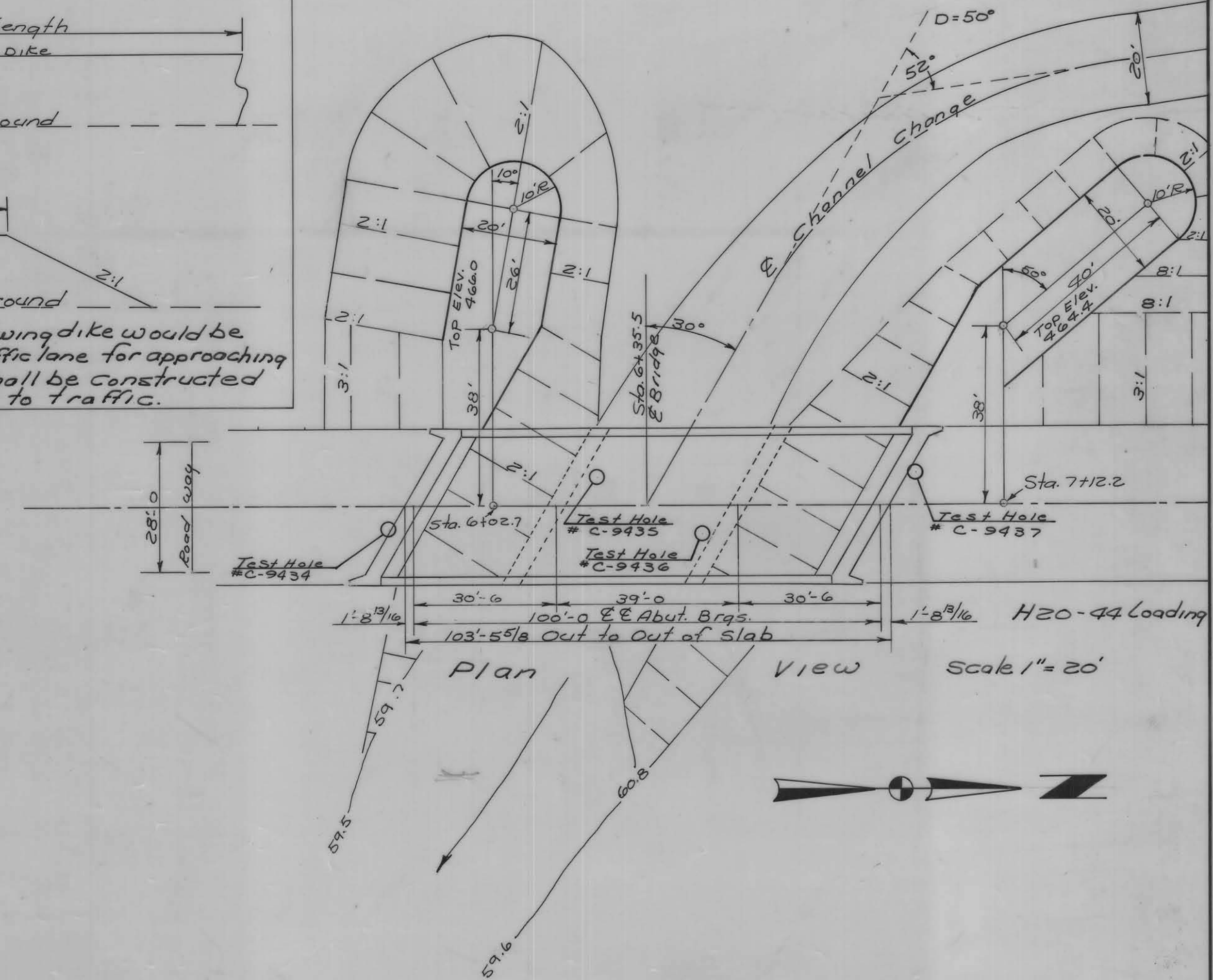
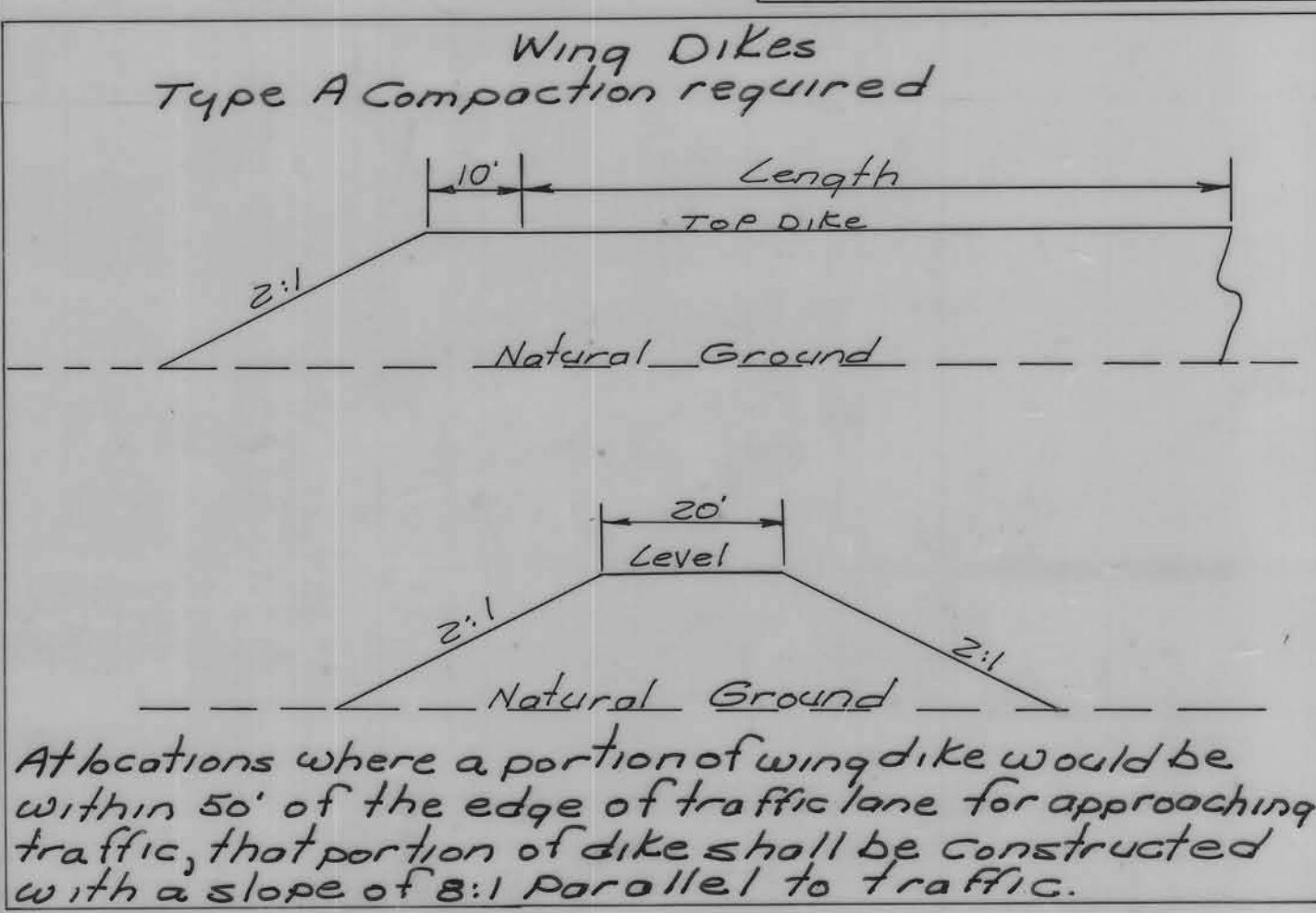
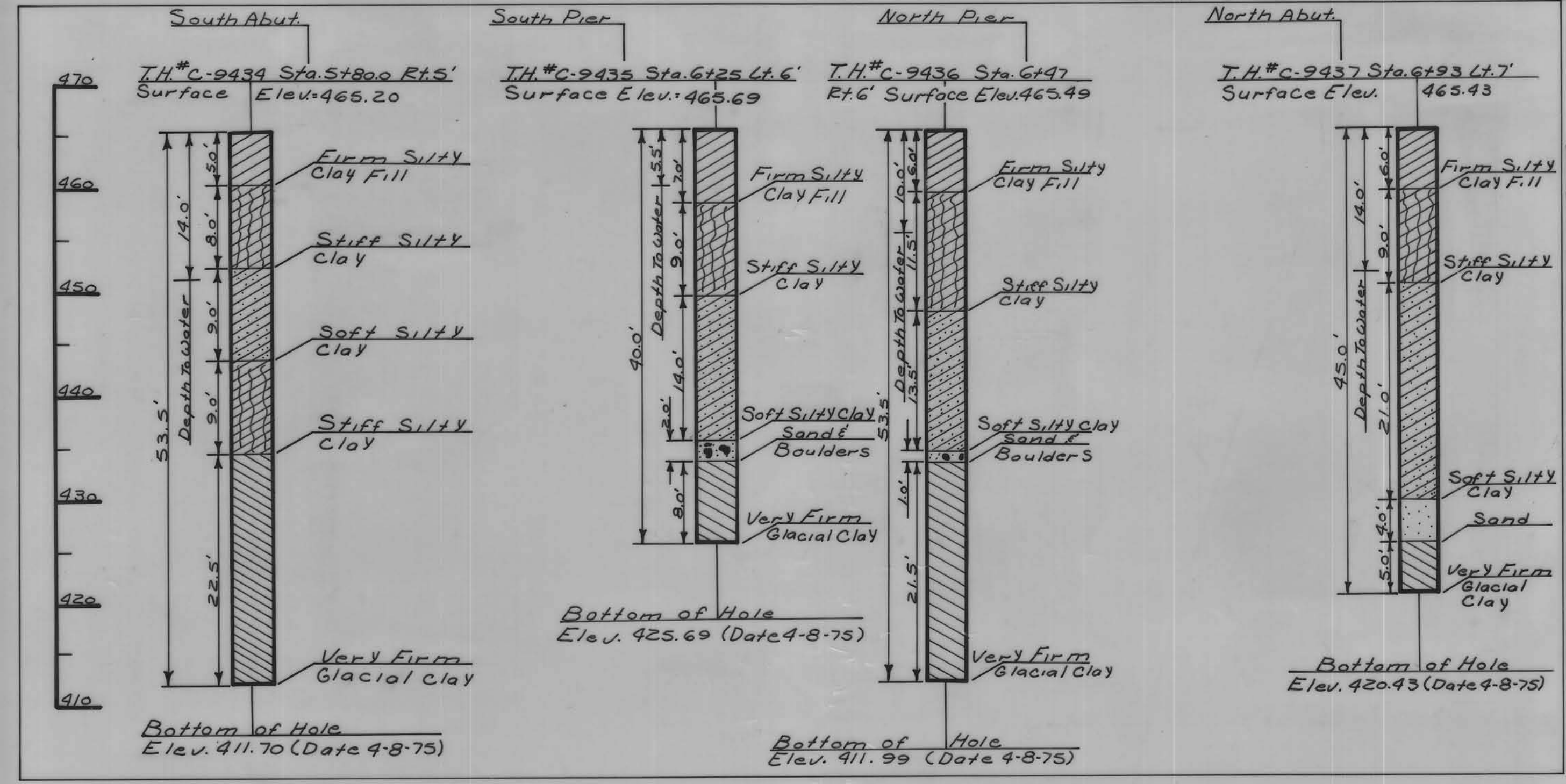
Bottom Cap, North pier on E Elev. - 466.13
 Bottom Cap, North pier @ exterior pile Lt. Elev. - 465.82
 Bottom Cap, North pier @ exterior pile Rt. Elev. - 466.08
 North Cap, exterior Pile Lt. cut off Elev. - 466.82
 North Cap, exterior Pile Rt. cut off Elev. - 467.08

Bottom North abut. on E Elev. - 462.36
 Bottom North abut. @ exterior Pile Lt. Elev. - 462.22
 Bottom North abut. @ exterior pile Rt. Elev. - 462.50
 North abut. exterior Pile Lt. cut off Elev. - 464.22
 North abut. exterior Pile Rt. cut off Elev. - 464.50
 Berm Elev. - 464.4

Hydraulic Data
 Design $Q_{50} = 1600$ c.f.s.
 Design High Water elev. - 460.2
 Q_{50} @ elev. 461.2 = 1,976 c.f.s.
 $A = 396$ sq. ft.
 $V = 4.99$ f.p.s.



NOTE: Pier caps are to be monolithic



DESIGN FOR 30° SKEW
 100'-0" X 30'-0" CONTINUOUS CONCRETE SLAB BRIDGE
 ALUMINUM HANDRAILS
 INTEGRAL ABUTMENTS AND CONCRETE PILE BENTS
 STA. 6+35.5 PROJ. NO. RS-1945(2)--61-24
 CRAWFORD COUNTY

LOCATION
 BETWEEN 35 & 36-83-38

151121

151121