

BRIDGE

CRAWFORD CO S.N. 2852 SEPT. 23/1959

STATE OF IOWA
 STATE HIGHWAY COMMISSION
 DESIGN FOR
 67'-6" x 20' PRE-STRESSED CONCRETE BEAM BRIDGE
 FARM TO MARKET ROAD SYSTEM PROJ. SN-2852
 CRAWFORD COUNTY
 AUGUST 1959

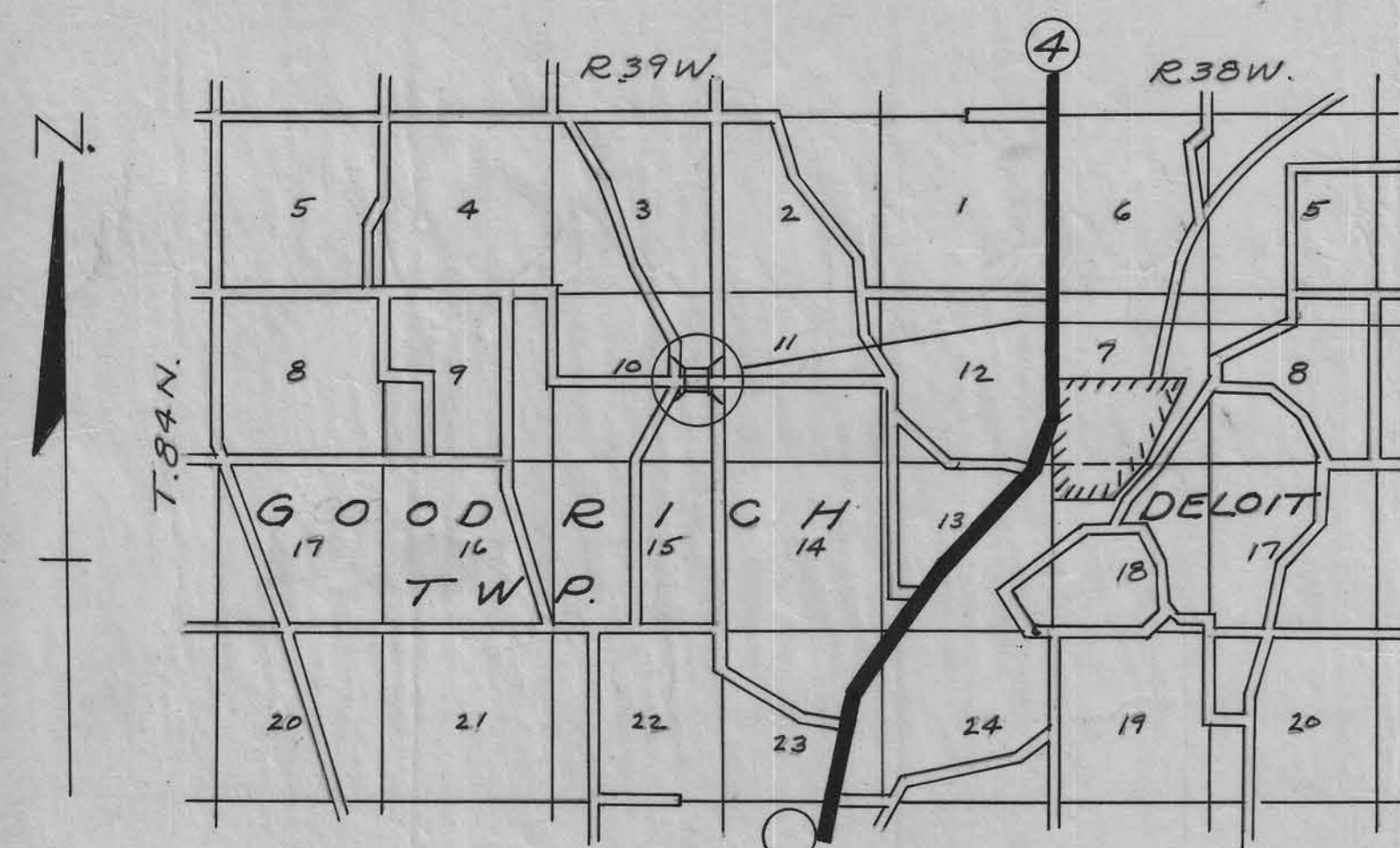
MILEAGE SUMMARY: = 69'-6" = 0.01316 MILES.

SPECIFICATIONS:
 Design: A.A.S.H.O. Series of 1953, and
 U.S.B.P.R. Design Criteria for Prestressed
 Concrete Bridges, 1955.
 Construction: Standard Specifications of
 the Iowa State Highway Commission, Series
 of 1956, and current Special Provisions
 applicable.

DESIGN-4959 GOODRICH TWP. CRAWFORD COUNTY SEC. 10, STA. 9+27.0 OVER LOCAL CREEK			
67'-6" x 20' PRE-STRESSED CONCRETE BEAM BRIDGE			
DESCRIPTION	ABUTMENTS	SUPERSTRUCT.	TOTAL
CONCRETE CLASS-"A"	12.60 C.Y.	34.30 C.Y.	46.90 C.Y.
REIN. STEEL	1316 LBS.	7466 LBS.	8782 LBS.
STRUCT. STEEL	4013 "	1299 "	5312 LBS.
PRE-STRESSED CONG. BEAMS		5 @ 67'-6"	5 @ 67'-6"
HANDRAIL		155 L.F.	155 L.F.
WOOD RAIL POSTS 8'x6'		4	4
TREATED WOOD TREESTILE PILING	1000 L.F.		1000 L.F.
TREATED LUMBER	6260 F.B.M.		6260 F.B.M.
GALVANIZED HARDWARE	175 LBS.	32	207 LBS.
EXCAVATION CLASS # 20	251 C.Y.		251 C.Y.
" CLASS # 10	274 C.Y.		274 C.Y.
" CLASS # 21	13 C.Y.		13 C.Y.
REMOVAL OF OLD STRUCTURE			LUMP SUM.

IN LETTING OF SEPT. 22, 1959

NOTE: Bridge Sign Assemblies Will be furnished & placed by Crawford County to Conform With S & T Instruction No. 11, revised March-1, 1956.



LOCATION MAP
SCALE 1" = 1 MILE

DESIGN No. - 4959
PROJECT No. SN-2852

APPROVED.

BOARD OF SUPERVISORS DATE

APPROVED.

1/2

CHIEF ENGINEER DATE
 IOWA HIGHWAY COMMISSION

DEPARTMENT OF COMMERCE
 BUREAU OF PUBLIC ROADS.
 RECOMMENDED FOR APPROVAL

DISTRICT ENGINEER

APPROVED

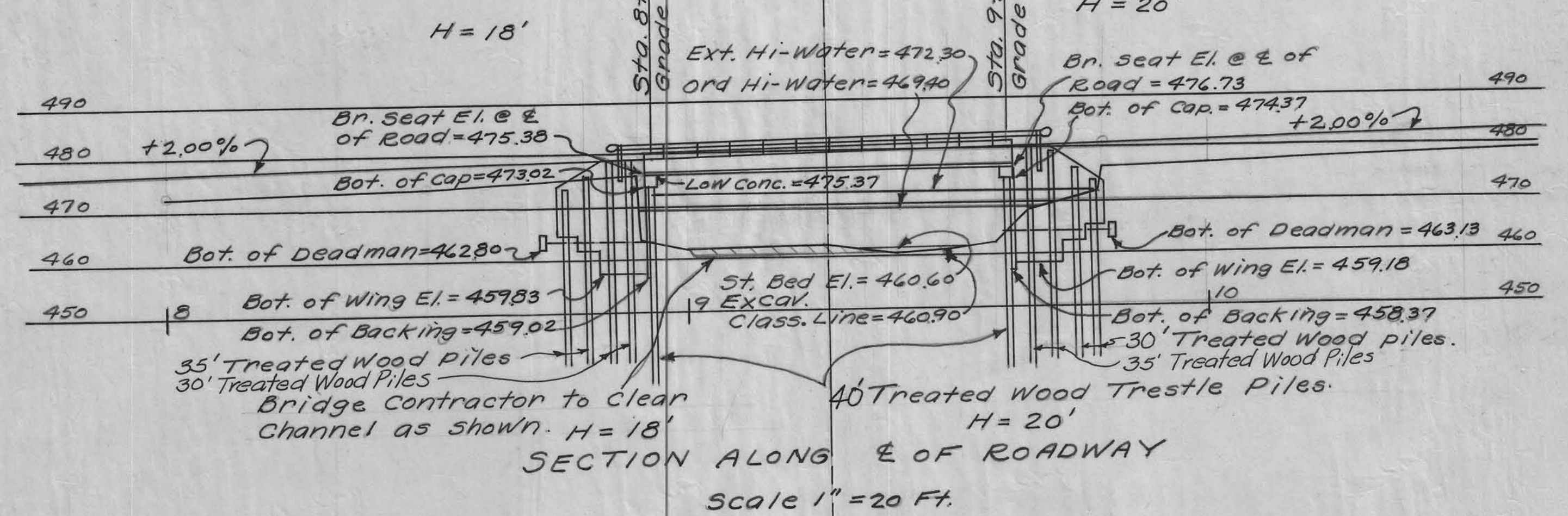
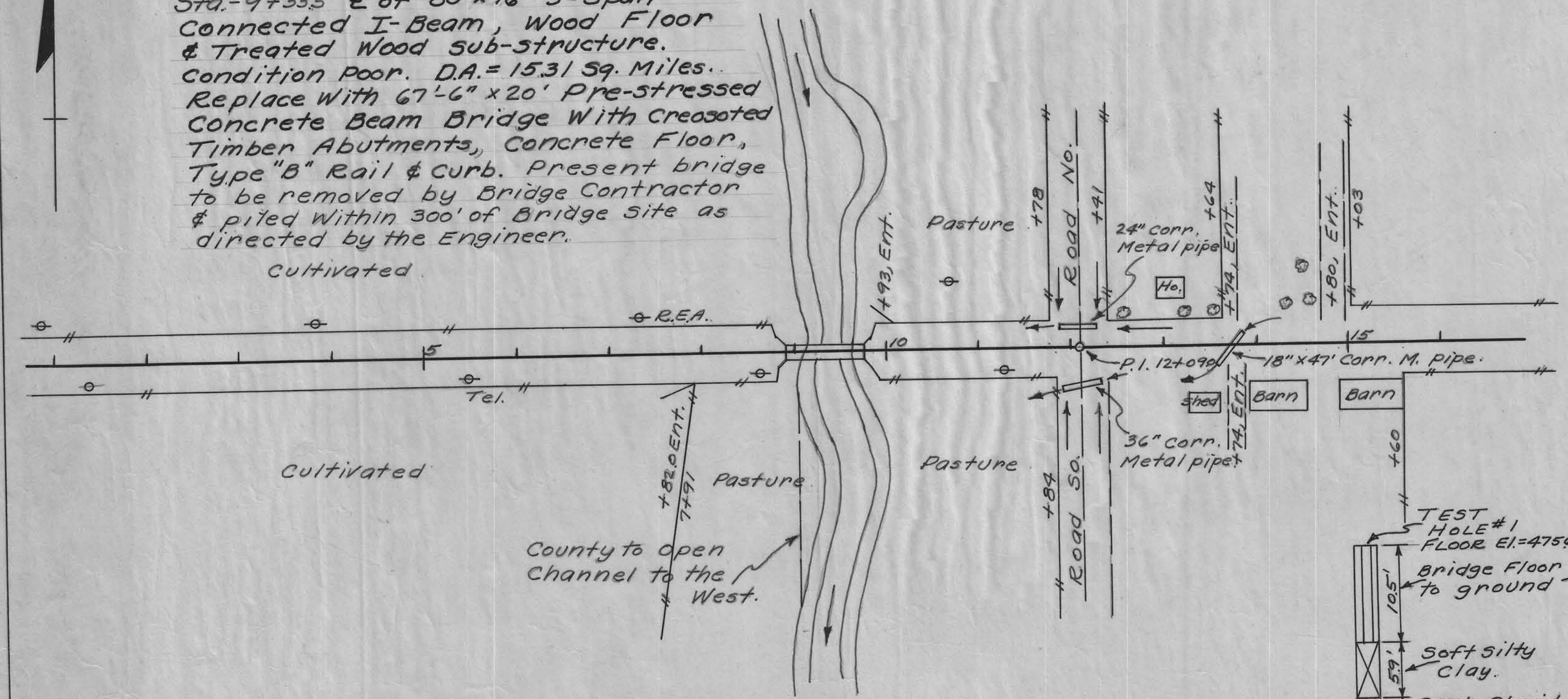
DIVISION ENGINEER DATE



GOODRICH TOWNSHIP
T.84N. R.39W.
SEC.-10.

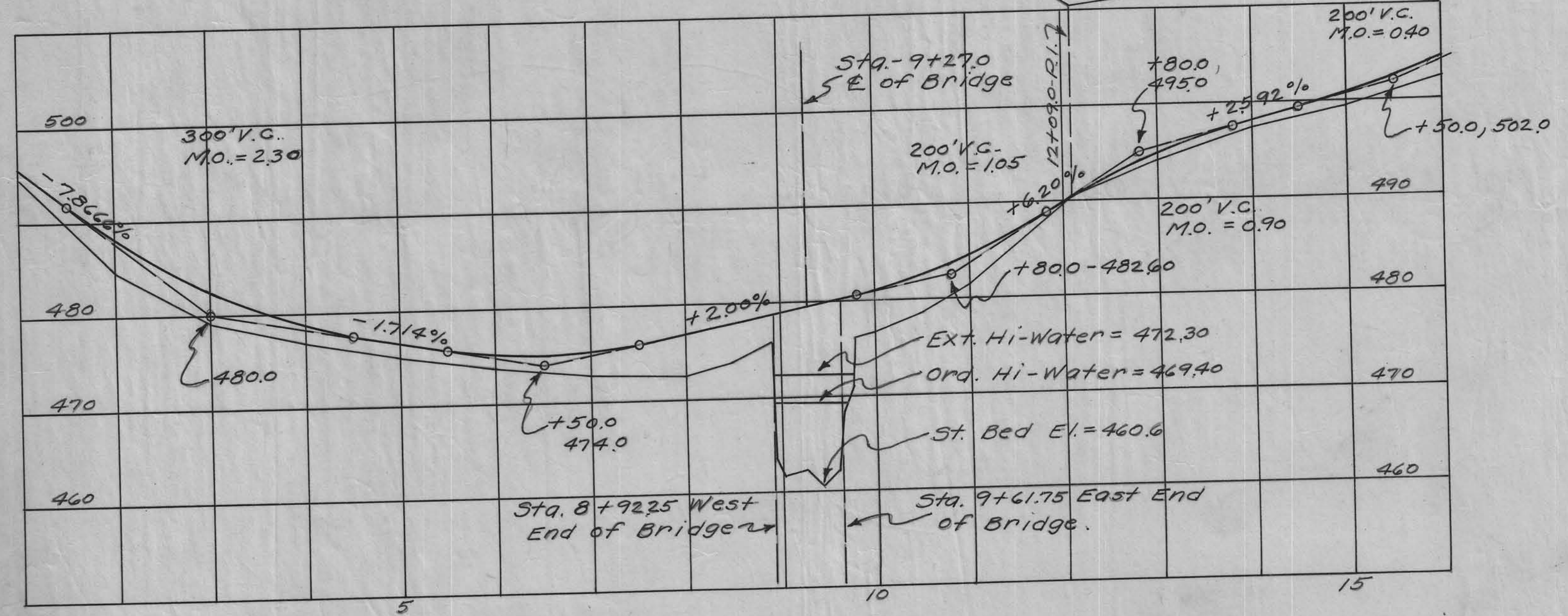
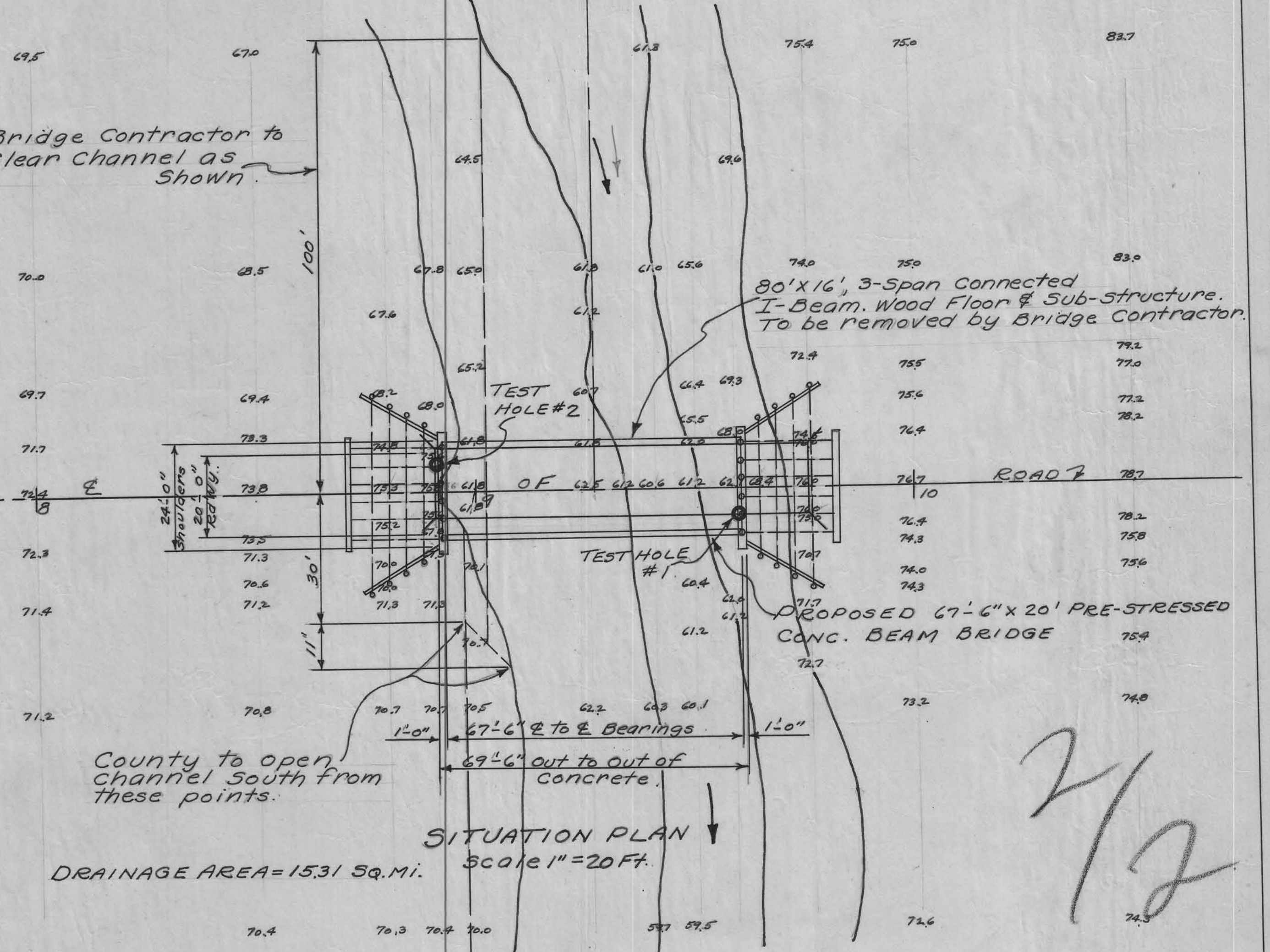
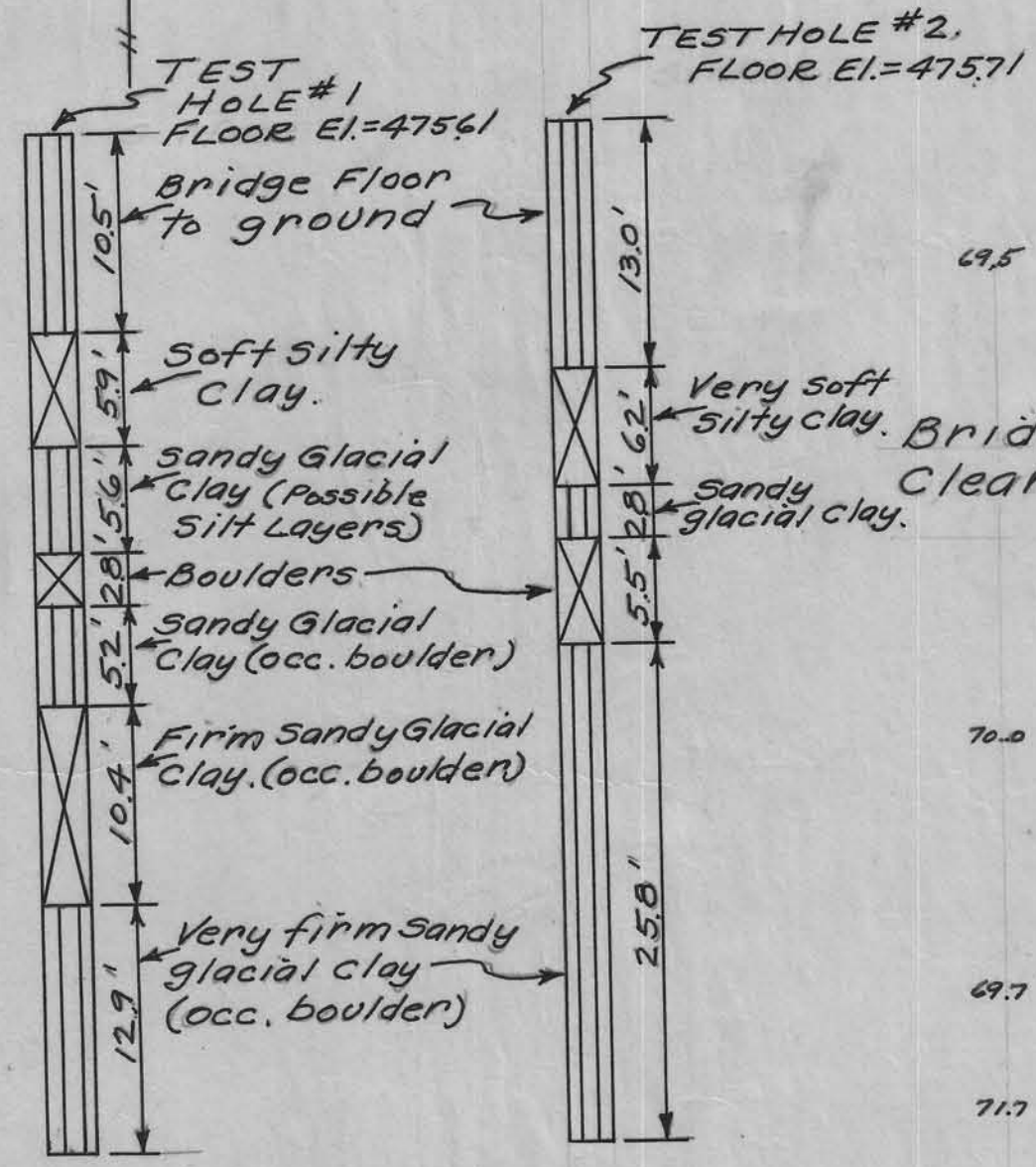
B.M.#2, Sta. 7+43, R.E.A. pole
34' North of ϵ , El.=473.27

Sta.-9+33.5 ϵ of 80'x16' 3-Span
Connected I-Beam, Wood Floor
& Treated Wood Sub-structure.
Condition Poor. D.A.=15.31 Sq. Miles.
Replace With 67'-6" x 20' Pre-stressed
Concrete Beam Bridge With creosoted
Timber Abutments, Concrete Floor,
Type "B" Rail & curb. Present bridge
to be removed by Bridge Contractor
& piled within 300' of Bridge Site as
directed by the Engineer.



GENERAL NOTES:

All Lumber is to be Creosoted. Backing & Wing plank in 10" & 12" Widths may be substituted for 8" plank shown but payment will be made on basis of quantities shown. All piling are to be creosoted & are to comply with the Specifications for Treated Timber Trestle Piles. All hardware is to be galvanized. C.I. ogee or malleable Washers are to be used under all heads & nuts bearing on wood. All bolts to have square heads & nuts. For details of Super-structure refer to Iowa Highway Commission Standard H11-1 and for details of Abutments refer to Standard H11-4 With "H" of 18 & 20 Feet. All materials & construction to conform with the Iowa Highway Commission Standard Specifications, Series of 1956.



Location:
Section: 10
Goodrich TWP.
T.84N. R.39W.

DESIGN FOR
67'-6" x 20' PRE-STRESSED CONCRETE BEAM BRIDGE
CONCRETE FLOOR - STEEL HANDRAIL
STA.-9+27.0 PROJECT NO.
CRAWFORD COUNTY, IOWA.