

STATE	FED. ROAD DIST. NO.	FISCAL YEAR	SHEET NO.	TOTAL SHEETS
IOWA	1	1975	1	2
PROJECT NUMBER				
RS-3142(1)--61-24				

STATE OF IOWA STATE HIGHWAY COMMISSION

PLANS OF PROPOSED IMPROVEMENT
ON THE

FARM TO MARKET SYSTEM

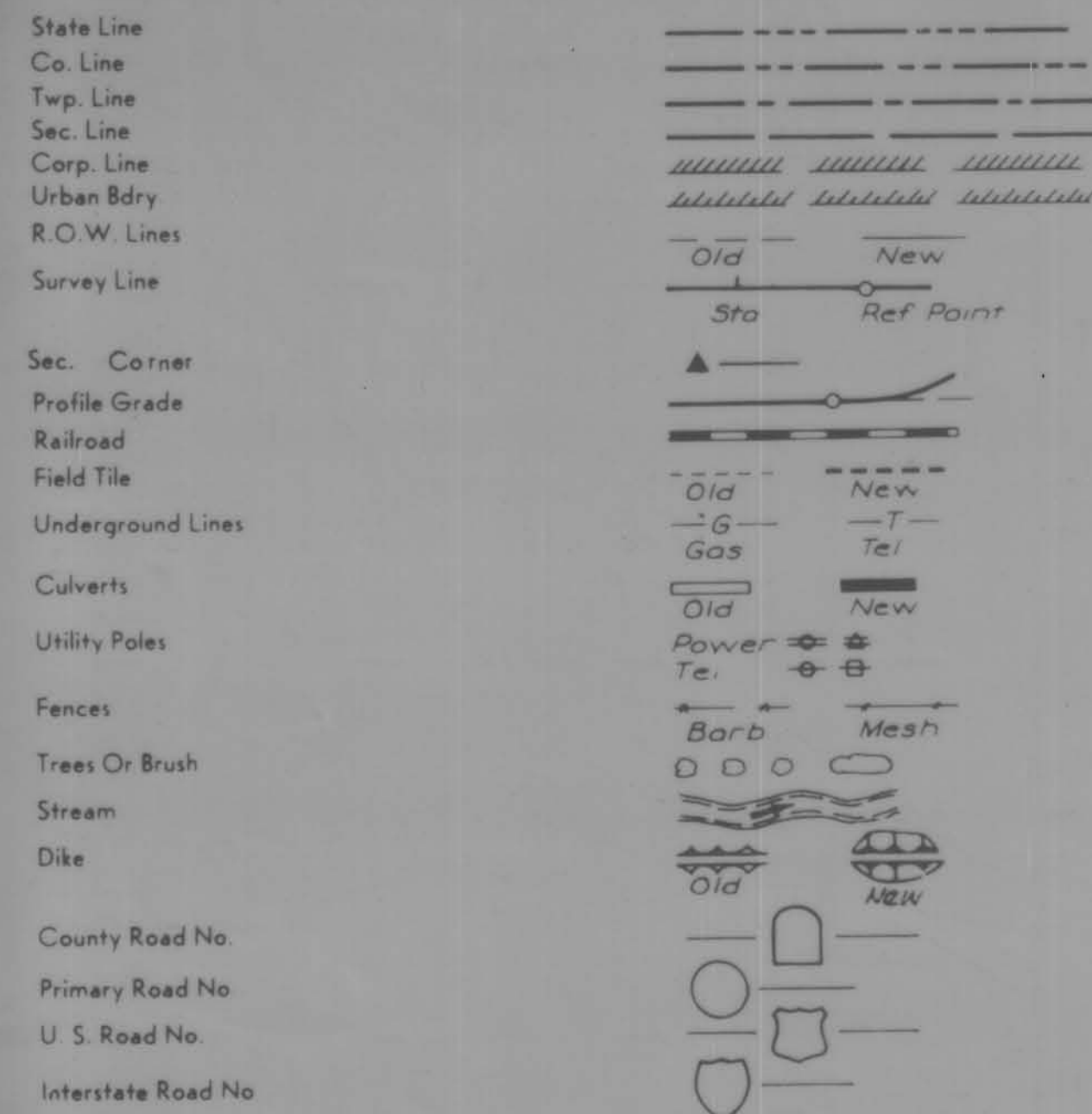
CRAWFORD COUNTY

PROJECT NO. RS-3142(1)--61-24 BRIDGE

INDEX OF SHEETS
SHEET NO. 1 TITLE, LOCATION MAP,
EST. OF QUANT., CROSS SECTION,
INDEX OF SHEETS

SHEET NO. 2 GENERAL PLAN

CONVENTIONAL SIGNS

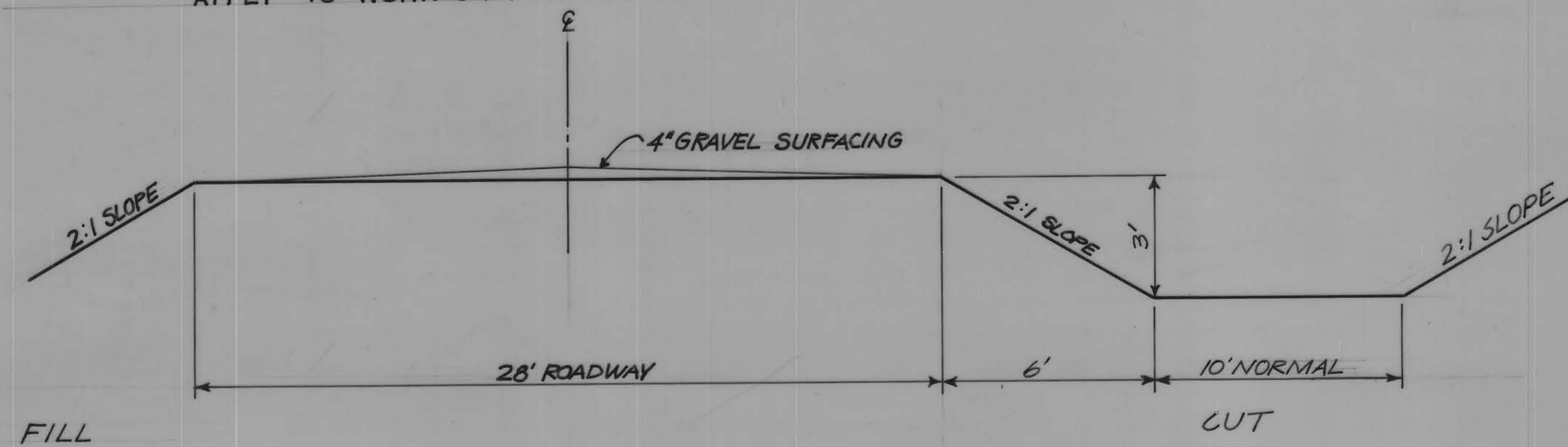


SPECIFICATIONS:

DESIGN: AASHO SERIES OF 1957
CONSTRUCTION: STANDARD SPEC. OF I.S.H.C. SERIES OF 1972 & CURRENT SPECIAL PROVISIONS & SUPPLEMENTAL SPECIFICATIONS.

SCALES: AS NOTED

THE IOWA STATE HIGHWAY COMMISSION STANDARD SPECIFICATIONS FOR CONSTRUCTION WORK, SERIES OF 1972 PLUS CURRENT SPECIAL PROVISIONS AND SUPPLEMENTAL SPECIFICATIONS SHALL APPLY TO WORK ON THIS PROJECT



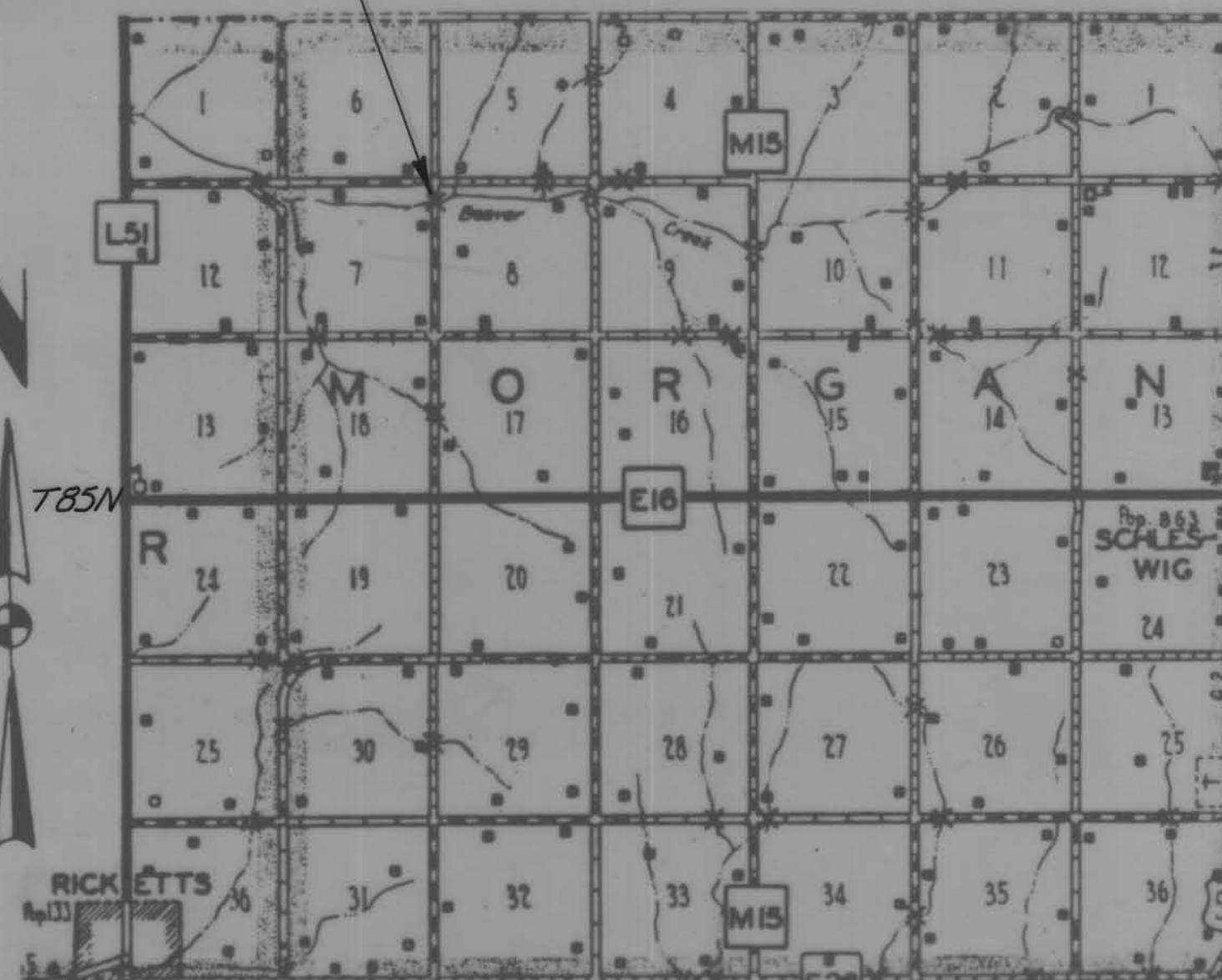
TYPICAL APPROACH SECTION

NO SCALE

REQUIRED I.S.H.C. STANDARDS

STANDARD	DATE ISSUED	LATEST REV.
H13-1	DEC., 1960	JUNE 28, 1968
H13-2	DEC., 1960	DEC. 13, 1968
H13-3	DEC., 1960	JUNE 28, 1968
H13-6	DEC., 1960	JUNE 28, 1968
H13-9	DEC., 1960	JUNE 28, 1968
H13-10	—	MARCH 6, 1974
P10A	1959	JUNE 12, 1972

167'-6" X 24'-0" PRETENSIONED PRESTRESSED CONC. BRIDGE 0° SKEW RS-3142(1)--61-24



TOTAL ESTIMATED QUANTITIES						
167'-6" X 24' PRETENSIONED PRESTRESSED CONC. BRIDGE						
ITEM NO.	ITEM	UNIT	SUPER STRUCTURE	ABUT'S	PIERS	QUANT.
1	BEAMS, PRETENSIONED PRESTRESSED CONC. A-7	NO.	12			12
2	CONCRETE, STRUCTURAL	CU. YDS.	117.9	33.0	13.0	163.9
3	EXCAVATION, CL. 10 CHANNEL	CU. YDS.				1013
4	EXCAVATION, CL. 20	CU. YARDS		33		33
5	HANDRAIL, ALUMINUM	LIN. FT.	330.0			330.0
6	PILING, CREOSOTED	LIN. FT.		20 @ 35'		700
7	PILING, PDA TYPE II, 16"	LIN. FT.			6 @ 50', 6 @ 46'	576
8	REMOVAL OF EXISTING STRUCTURE	L.S.				LUMP SUM
9	STEEL, REINFORCING	LBS.	27,499	3,342	2,078	32,919

ITEM NO. (2) THE FLOOR, CURB AND WING POSTS (118.7 CU. YDS.) ARE TO BE CLASS "D" CONCRETE, THE REMAINDER (45.2 CU. YDS.) ARE TO BE CLASS "C" CONCRETE

MILEAGE SUMMARY

BRIDGE AT STA. 26+90 = 169.17 FT. = 0.0320 MI.
TRAFFIC COUNT: 36 VPD (1971)

APPROVED

Vern Krause

LeRoy A. Hansohn

Eileen Seider

Charles J. Smith

Don H. Jensen
BOARD OF SUPERVISORS

APPROVED

COUNTY ENGINEER DATE
H. Dale Wright May 19, 1975

I HEREBY CERTIFY THAT THIS PLAN WAS PREPARED UNDER MY SUPERVISION AND THAT ENGINEERING DECISIONS WITH REGARD TO THE DESIGN WERE MADE BY ME OR BY OTHER DULY REGISTERED PROFESSIONAL ENGINEERS UNDER THE LAWS OF THE STATE OF IOWA.
Stephen A. Sundquist
5707 5-16-75
IOWA REGISTRATION NUMBER DATE

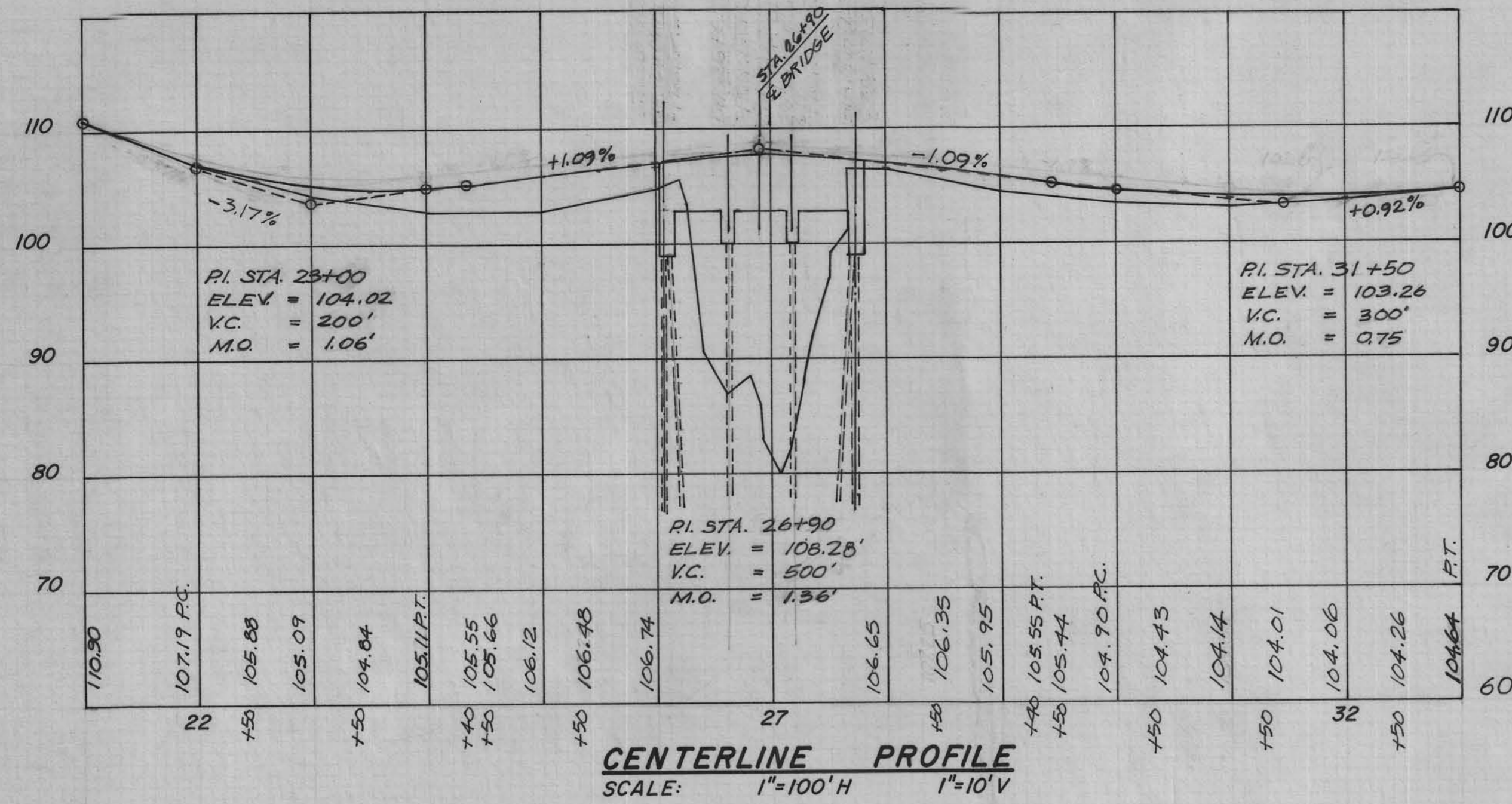
APPROVED

DEPARTMENT OF TRANSPORTATION
FEDERAL HIGHWAY ADMINISTRATION
DIVISION ENGINEER DATE

APPROVED

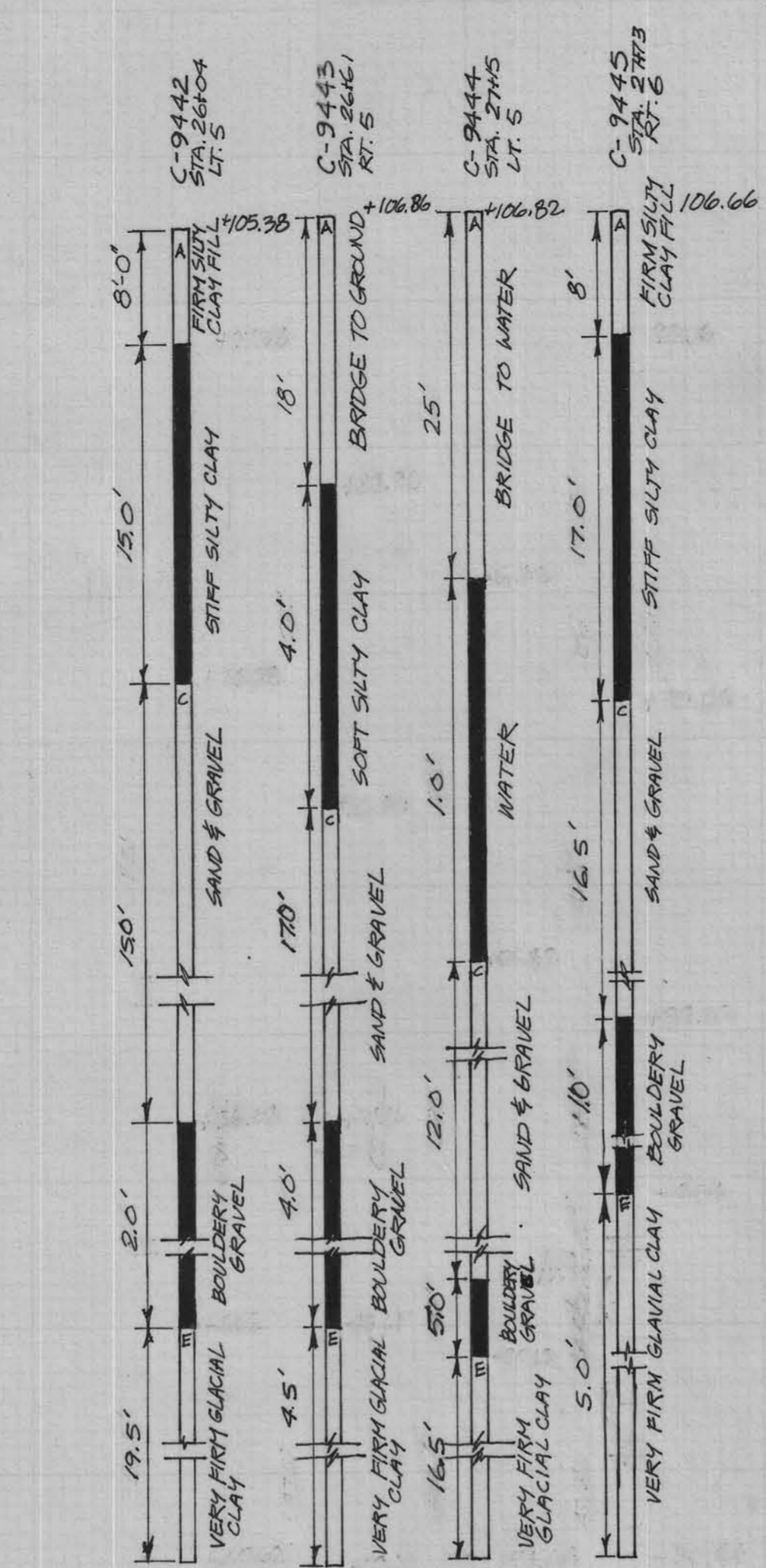
Pat Over 5/30/75
DEPUTY CHIEF ENGINEER
IOWA HIGHWAY COMMISSION DATE

LETTING DATE: JUNE 24, 1975
CRAWFORD COUNTY PROJECT NO. RS-3142(1)--61-24 BRIDGE

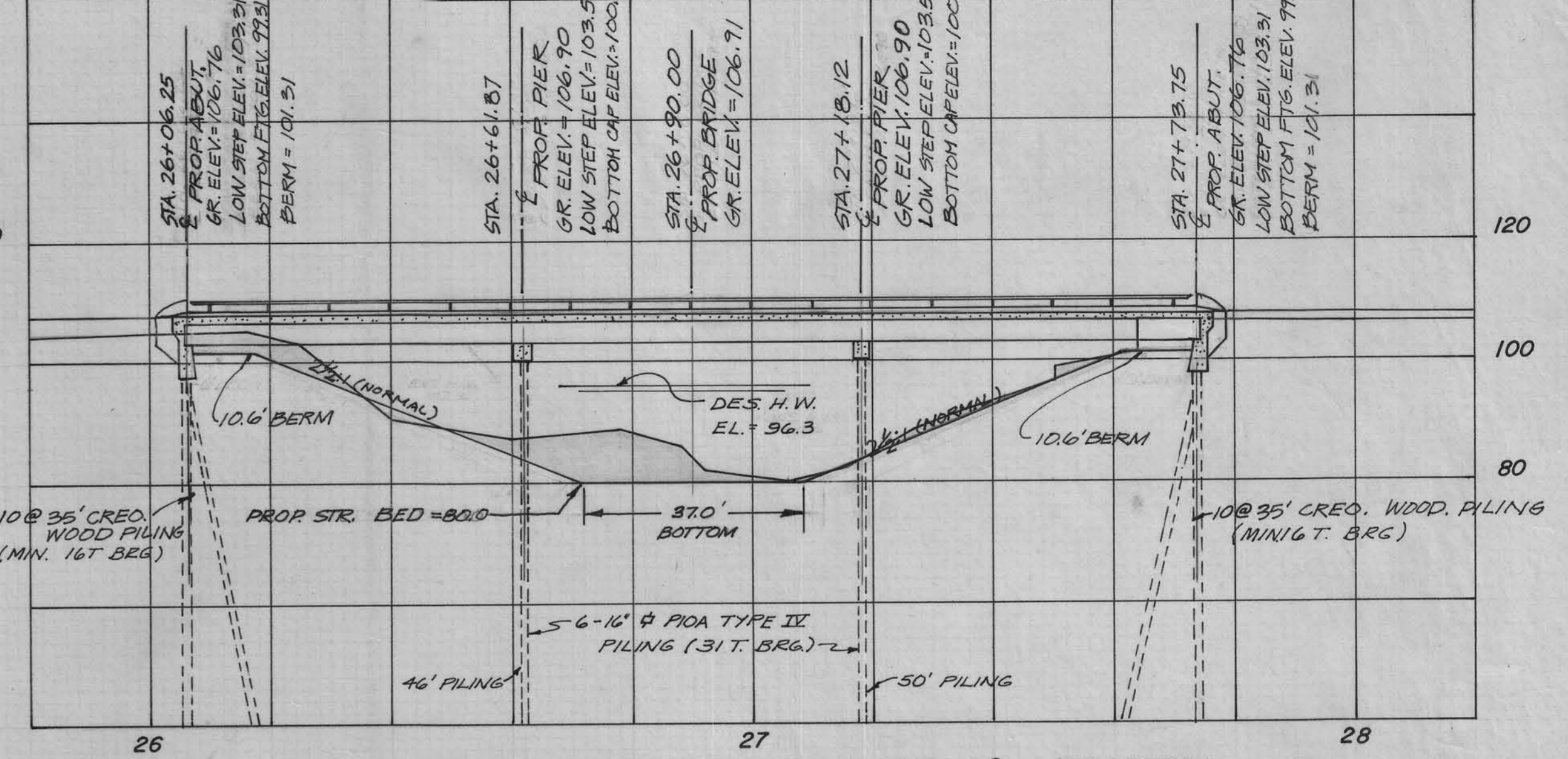
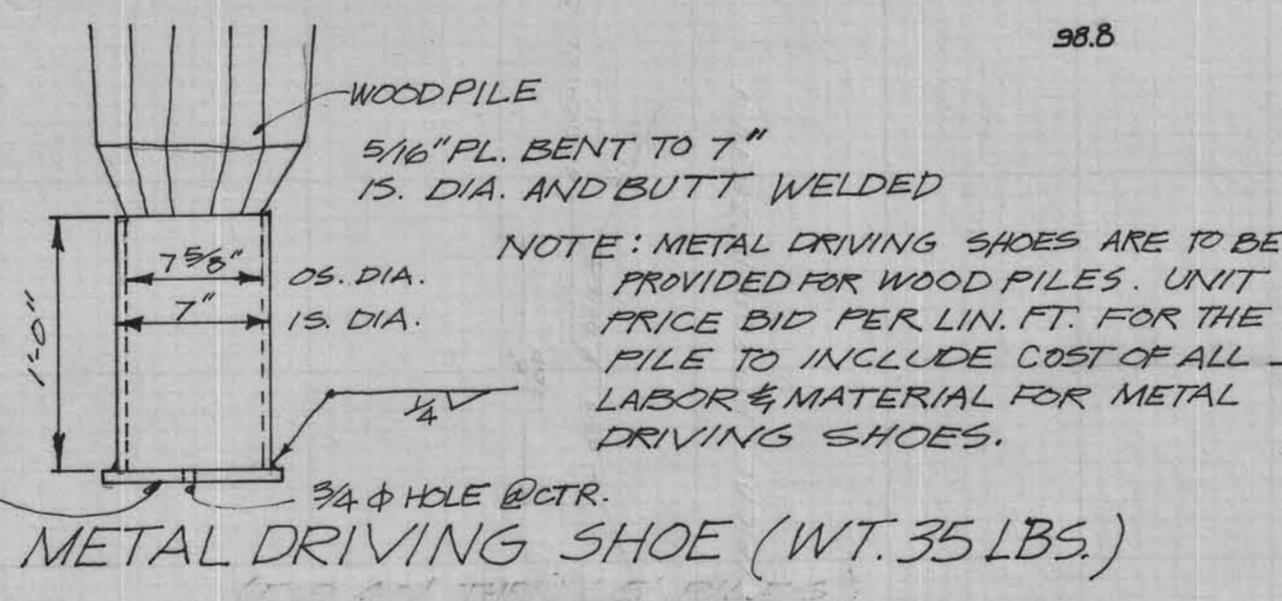


B.M. #1 SPIKE IN POWER POLE 33' LT. OF STA. 10+24 ELEV. = 150.39
 B.M. #2 SPIKE IN POWER POLE 32' LT. OF STA. 23+97 ELEV. = 100.00

GENERAL NOTES:
 (1) APPROACH GRADES TO BE BUILT BY OTHERS



SOUNDING DATA:
 DATE OF SOUNDING REPORT 04-09-75
 THESE SOUNDINGS ARE MADE FOR DESIGN PURPOSES & ARE NOT GUARANTEED FOR CONSTRUCTION.



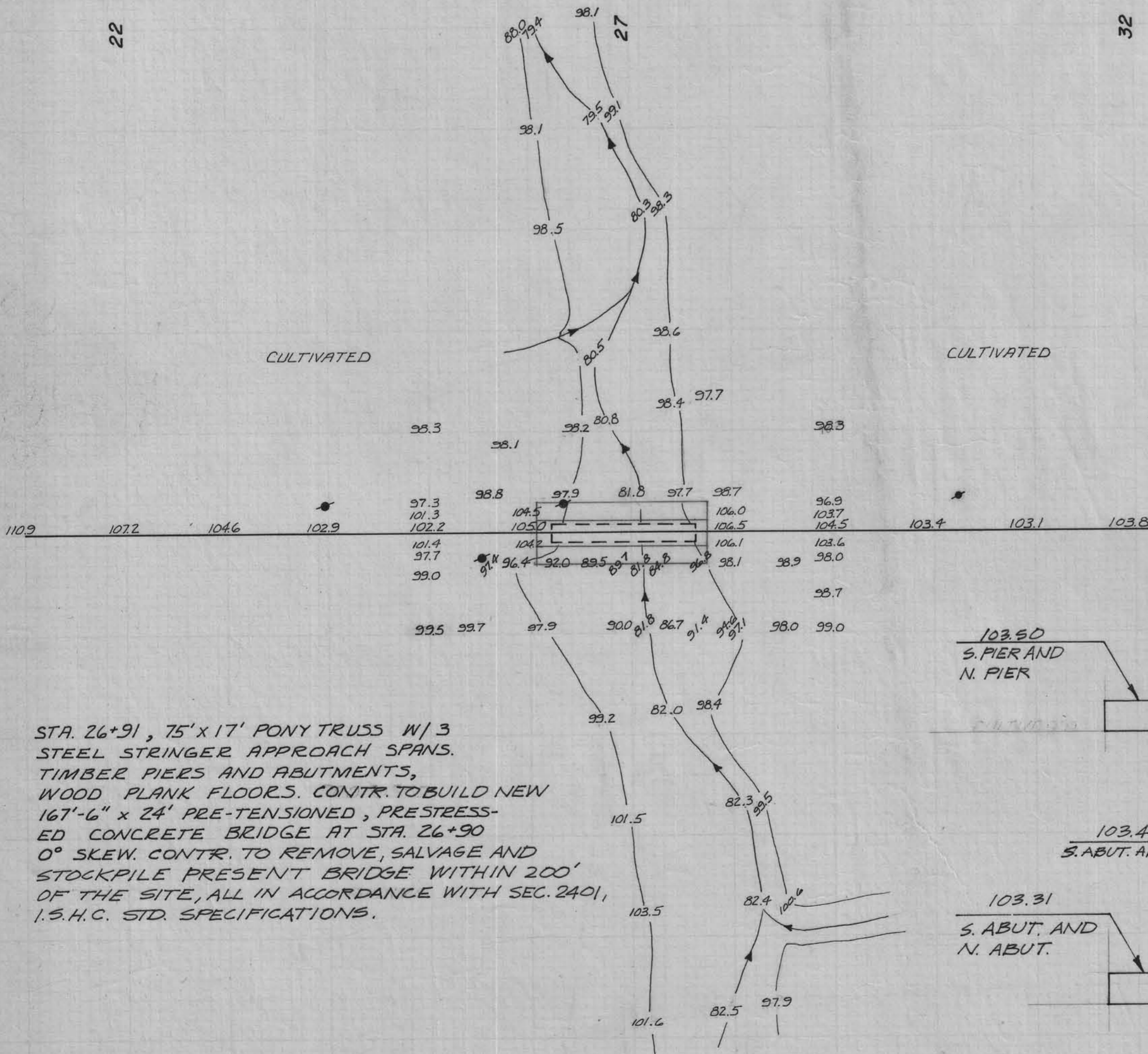
LONGITUDINAL SECTION ALONG E ROADWAY
 SCALE: 1"=20' H&V

HYDRAULICS
 D.R. = 23.6 SQ. MILES
 DES. DISCHARGE = 5000 C.F.S.
 SLOPE = 6.57' MILE
 DES. H.W. = 96.3
 AREA BELOW DES. H.W. = 134 FT.²
 AVG. VEL. = 4.41 F.P.S.
 EXT. H.W. = 102.3

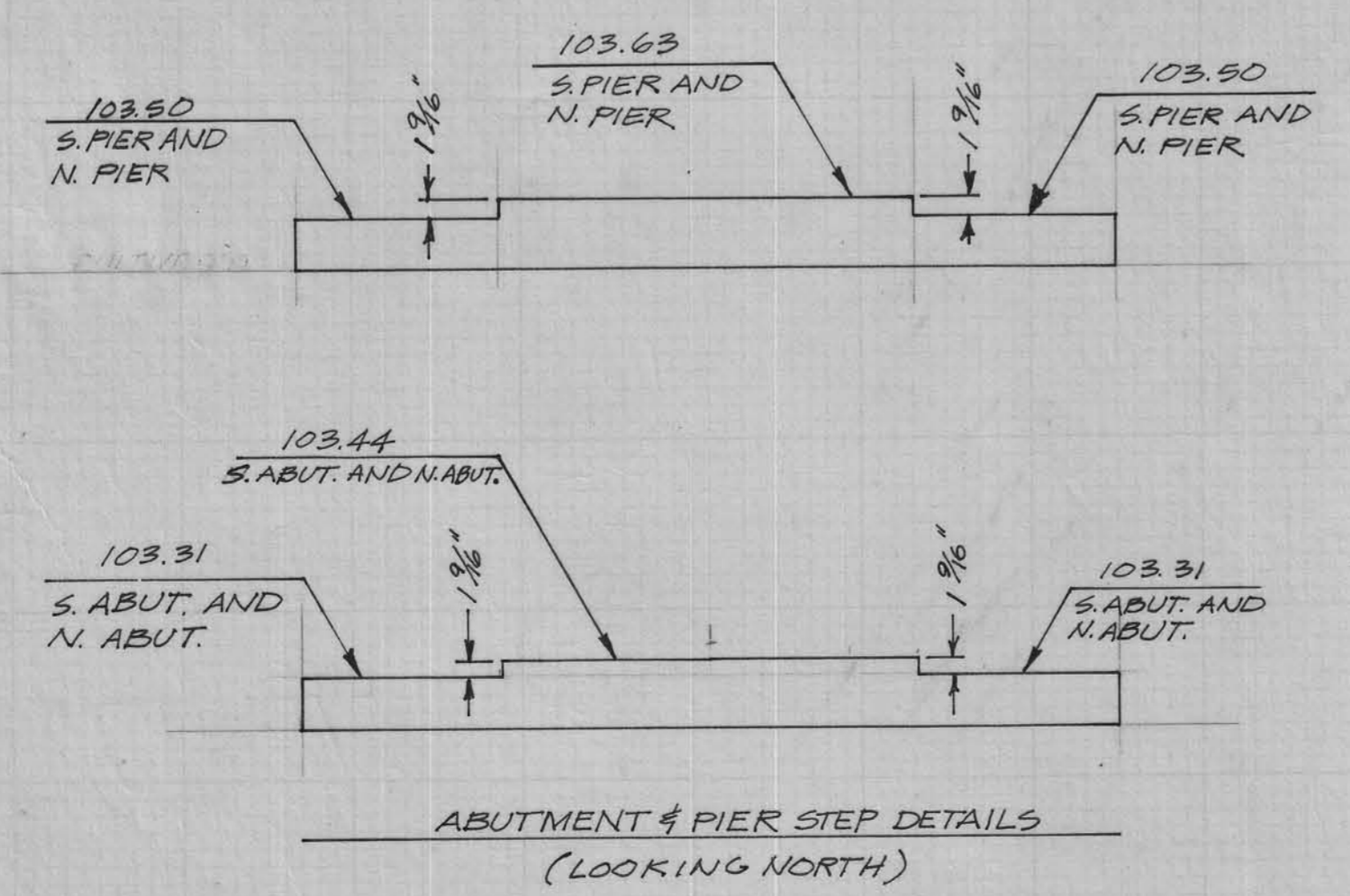
SUBSTRUCTURE
 CONCRETE STUB ABUTMENTS 1.5 H.C. STD. H13-6
 PILE BENT PIERS 1.5 H.C. STA. H13-9 WITH 1.5 H.C. STD. PICA TYPE II PILES, K=16". THE CREOSOTED WOOD ABUT. PILES ARE TO BE DRIVEN TO FULL PENETRATION IF PRACTICABLE, BUT TO NOT LESS THAN A 16 TON BEARING VALUE. METAL DRIVING SHOES SHALL BE REQUIRED FOR CREOSOTED WOOD ABUT. PIER PILES ARE TO BE DRIVEN TO FULL PENETRATION IF PRACTICABLE, BUT TO AT LEAST A 31 TON BEARING VALUE. STEEL DRIVING POINTS SHALL BE REQUIRED

SUPERSTRUCTURE
 167'-6" x 24' PRE-TENSIONED PRESTRESSED CONC. BRIDGE W/ ALUMINUM HANDRAILS 1.5 H.C. STDS. H13-1, 2, 3 & 10

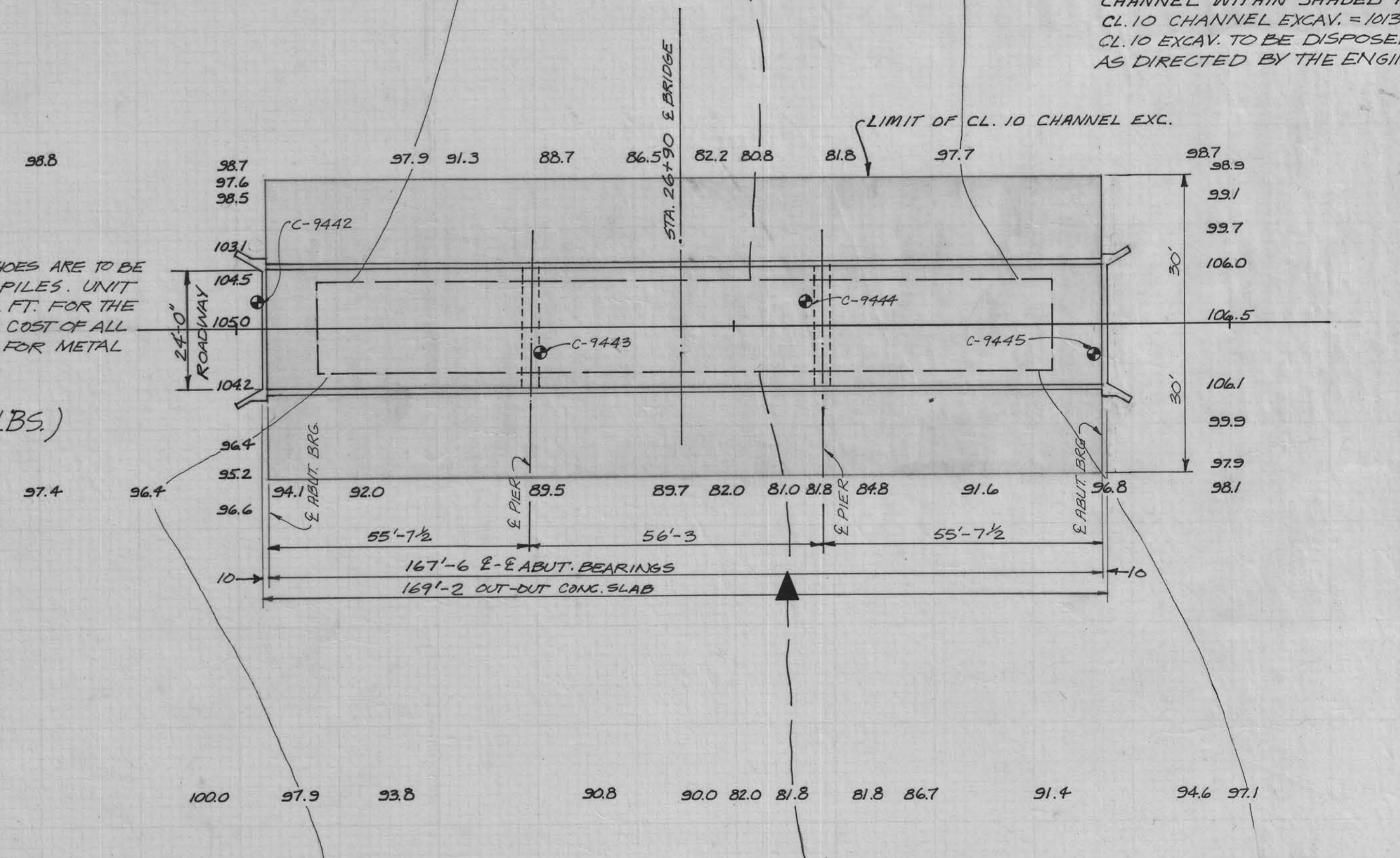
LOCATION
 OVER BEAVER CREEK NEAR THE NW CORNER OF SECTION 8, T85N, R40W, MORGAN TOWNSHIP IN CRAWFORD COUNTY, IOWA



GENERAL PLAN
 SCALE 1"=100'



ABUTMENT & PIER STEP DETAILS
 (LOOKING NORTH)



SITUATION PLAN
 SCALE 1"=20'

DESIGN FOR 167'-6" x 24' PRE-TENSIONED PRESTRESSED CONCRETE BRIDGE
 CONCRETE STUB ABUT. PILE BENT PIERS
 STA. 26+90.0 SKEW 0°
 CRAWFORD COUNTY
 DESIGN # 675 FILE # 50222 PROJ # RS-3142(1)-61-24