

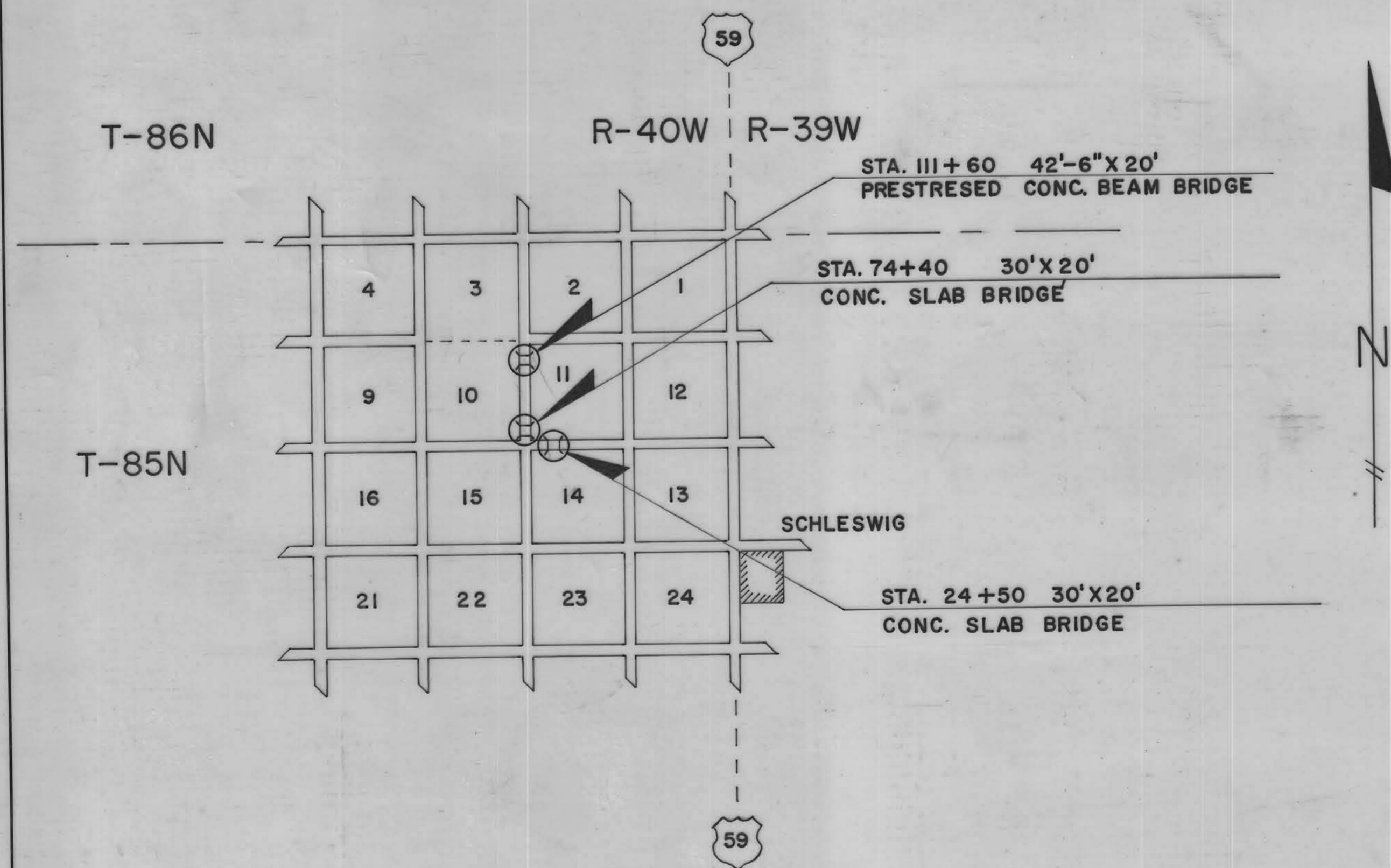
STATE OF IOWA
 STATE HIGHWAY COMMISSION
 DESIGN FOR
 TWO 30'X20' CONCRETE SLAB BRIDGES
 ONE 42'-6"X20' PRE-STRESSED CONCRETE BEAM BRIDGE

SECONDARY ROAD SYSTEM
 CRAWFORD COUNTY

JANUARY, 1962

PROJ. 62-32

SPECIFICATIONS:
 DESIGN: A.A.S.H.O. SERIES OF 1957.
 CONSTRUCTION: STANDARD SPECIFICATIONS
 OF THE IOWA STATE HIGHWAY COMMISSION,
 SERIES OF 1960, PLUS CURRENT SPECIAL
 PROVISIONS EXCEPT AS NOTED.

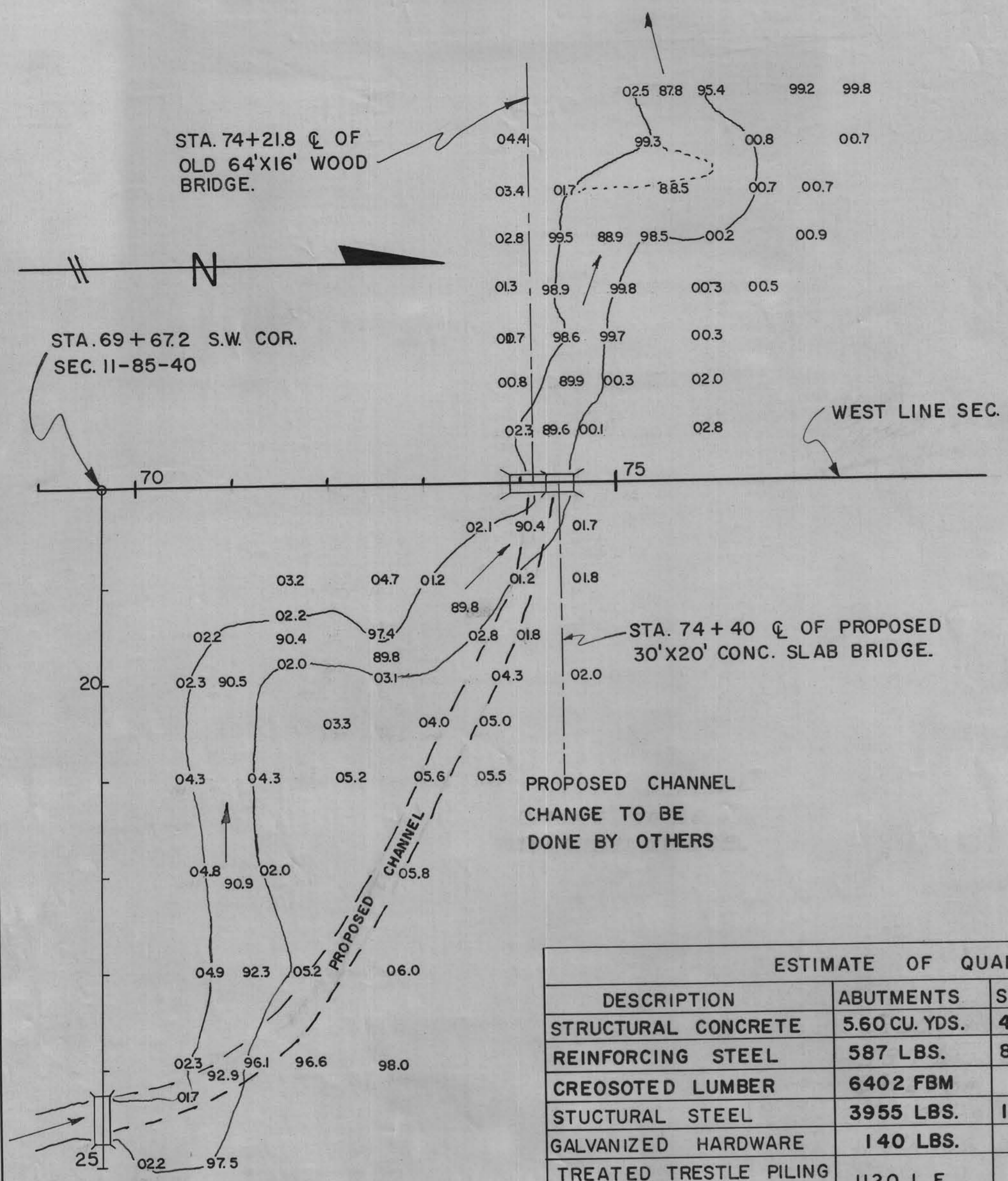


APPROVED	DATE
CHAIRMAN	

BOARD OF SUPERVISORS

APPROVED	
DISTRICT ENGINEER	DATE
APPROVED	
COUNTY ENGINEER	DATE

MORGAN TOWNSHIP
T-85N R-40W
BET. SEC. 10 & 11



STA. 74+21.8 C. 64'X16' PRESENT WOOD BRIDGE.
DA=2640 AC. REPLACE WITH 30'X20' CONCRETE SLAB BRIDGE. BRIDGE CONTRACTOR TO REMOVE OLD BRIDGE AND PILE WITHIN 300' OF BRIDGE AS DIRECTED BY COUNTY ENGINEER.

ESTIMATE OF QUANTITIES			
DESCRIPTION	ABUTMENTS	SUPERSTRUC.	TOTALS
STRUCTURAL CONCRETE	5.60 CU. YDS.	46.2 CU. YDS.	51.8 CU. YDS.
REINFORCING STEEL	587 LBS.	8028 LBS.	8615 LBS.
CREOSOTED LUMBER	6402 FBM		6402 FBM
STUCTURAL STEEL	3955 LBS.	1541 LBS.	5496 LBS.
GALVANIZED HARDWARE	140 LBS.		140 LBS.
TREATED TRESTLE PILING 12 @ 45', 8 @ 40', 4 @ 35', 4 @ 30'	1120 L.F.		1120 L.F.
EXCAV. CLASS 10 CHANNEL			142.6 CU. YDS.
EXCAV. CLASS 20			20.9 CU. YDS.
" " 21			
REMOVAL OF OLD BRIDGE			LUMP SUM

GENERAL NOTES:

IOWA HIGHWAY COMMISSION STANDARD DESIGN J3A MARCH, 1960, REVISED 1-4-61, SHALL APPLY TO THIS BRIDGE.

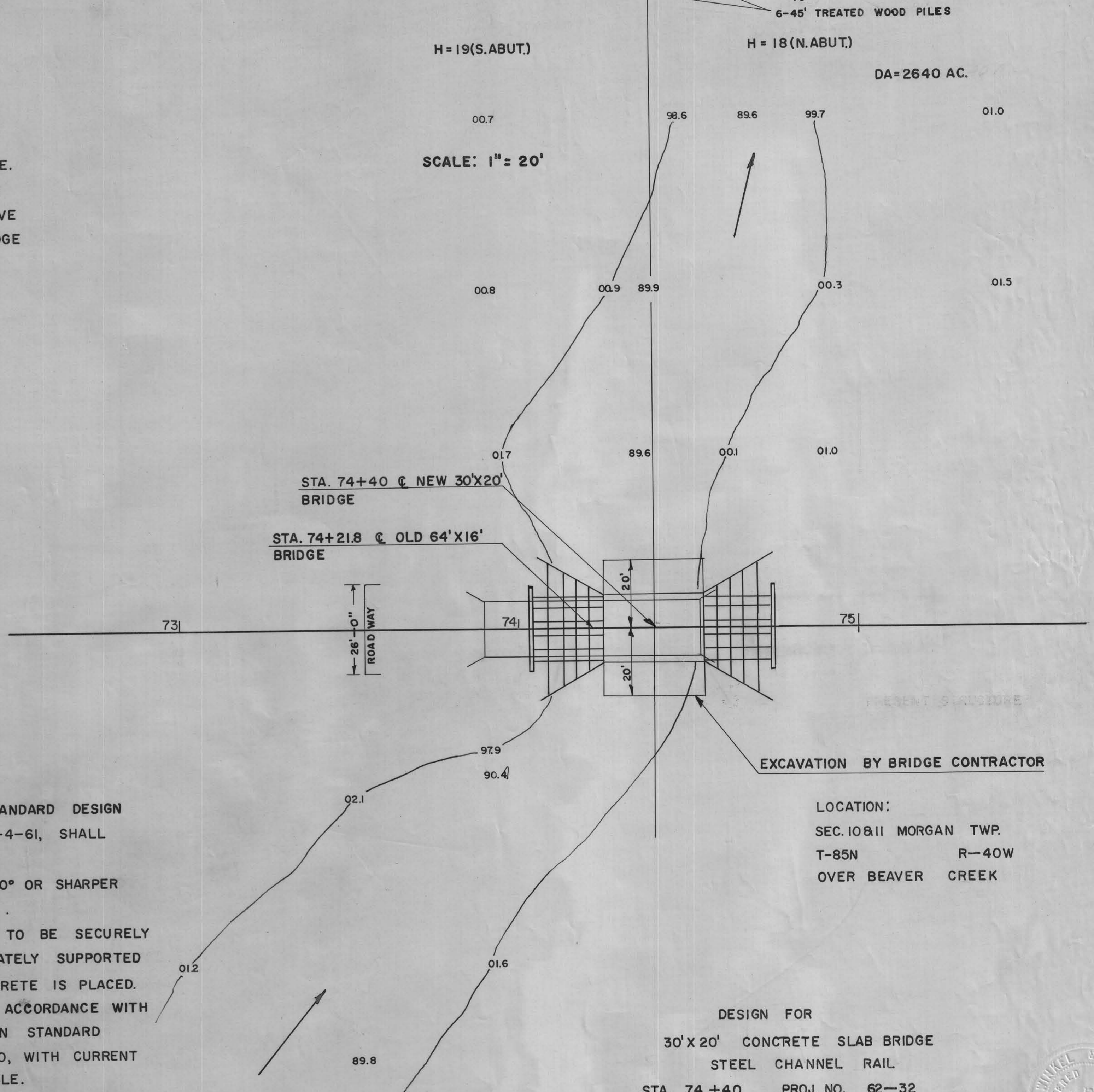
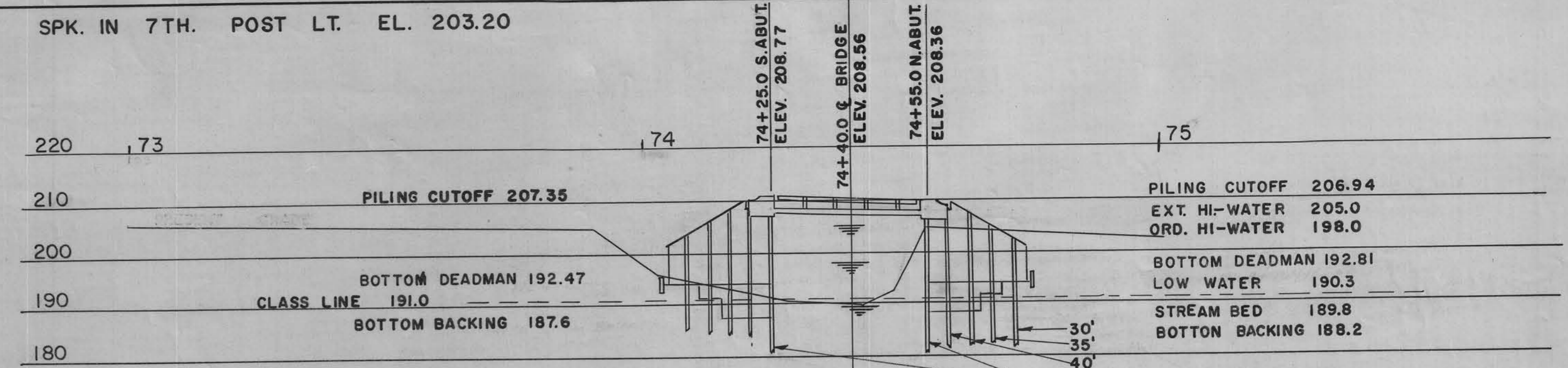
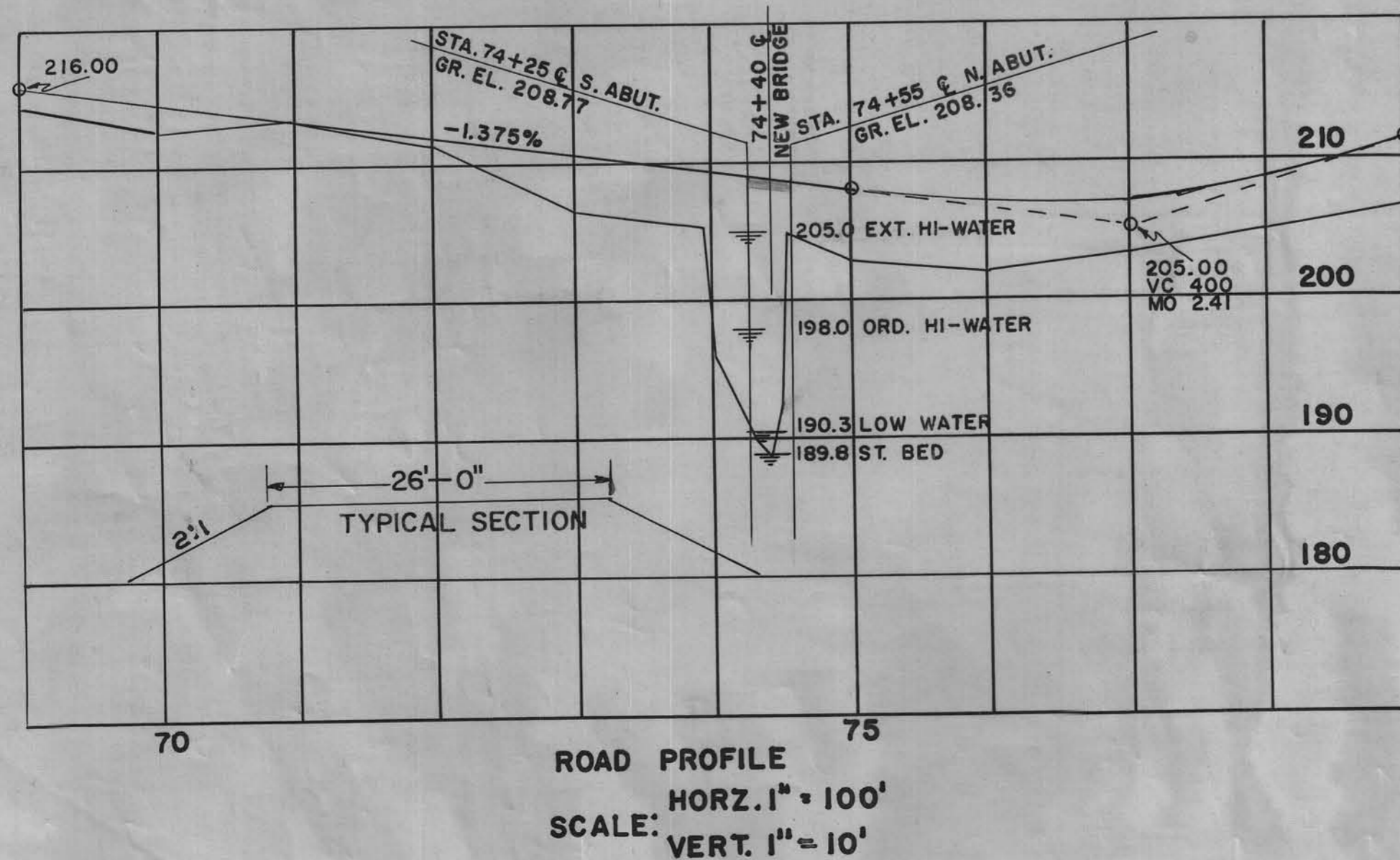
ALL EXPOSED CORNERS OF 90° OR SHARPER ARE TO BE FILLETED 3/4" .

ALL REINFORCING BARS ARE TO BE SECURELY WIRED IN PLACE AND ADEQUATELY SUPPORTED ON BAR CHAIRS BEFORE CONCRETE IS PLACED.

ALL CONSTRUCTION TO BE IN ACCORDANCE WITH THE IOWA HIGHWAY COMMISSION STANDARD SPECIFICATIONS, SERIES OF 1960, WITH CURRENT SPECIAL PROVISIONS APPLICABLE.

BRIDGE SIGN ASSEMBLY NOTE:

PLACE TRIPLE THREE-INCH RED REFLECTORS (M-200) AT EACH END OF THE BRIDGE ON BOTH SIDES FOR APPROACHING TRAFFIC. BY COUNTY.



DESIGN FOR
30'X20' CONCRETE SLAB BRIDGE
STEEL CHANNEL RAIL
STA. 74+40 PROJ. NO. 62-32
CRAWFORD COUNTY, IOWA



130590