

STATE	FED. ROAD DIST. NO.	FISCAL YEAR	SHEET NO.	TOTAL SHEETS
IOWA	1	1972	1	2
PROJECT NUMBER				
L 73-1		O.E.R. PROJECT NO.4		

# STATE OF IOWA STATE HIGHWAY COMMISSION

## PLANS OF PROPOSED IMPROVEMENT ON THE SECONDARY ROAD SYSTEM CRAWFORD COUNTY

### RE-ERECTION 70'x16' BOWSTRING TRUSS

PROJECT NO. L 73-1      O.E.R. PROJECT NO.4

SCALES: AS NOTED

**THE IOWA STATE HIGHWAY COMMISSION STANDARD SPECIFICATIONS  
FOR CONSTRUCTION WORK, SERIES OF 1972 SHALL  
APPLY TO WORK ON THIS PROJECT, PLUS  
CURRENT SUPPLEMENT SPECIFICATIONS AND SPECIAL PROVISIONS.**

#### INDEX OF SHEETS

SHEET NO.	ITEM
1	TITLE SHEET, ESTIMATE OF QUANTITIES AND MILEAGE SUMMARY.
2	DETAILS

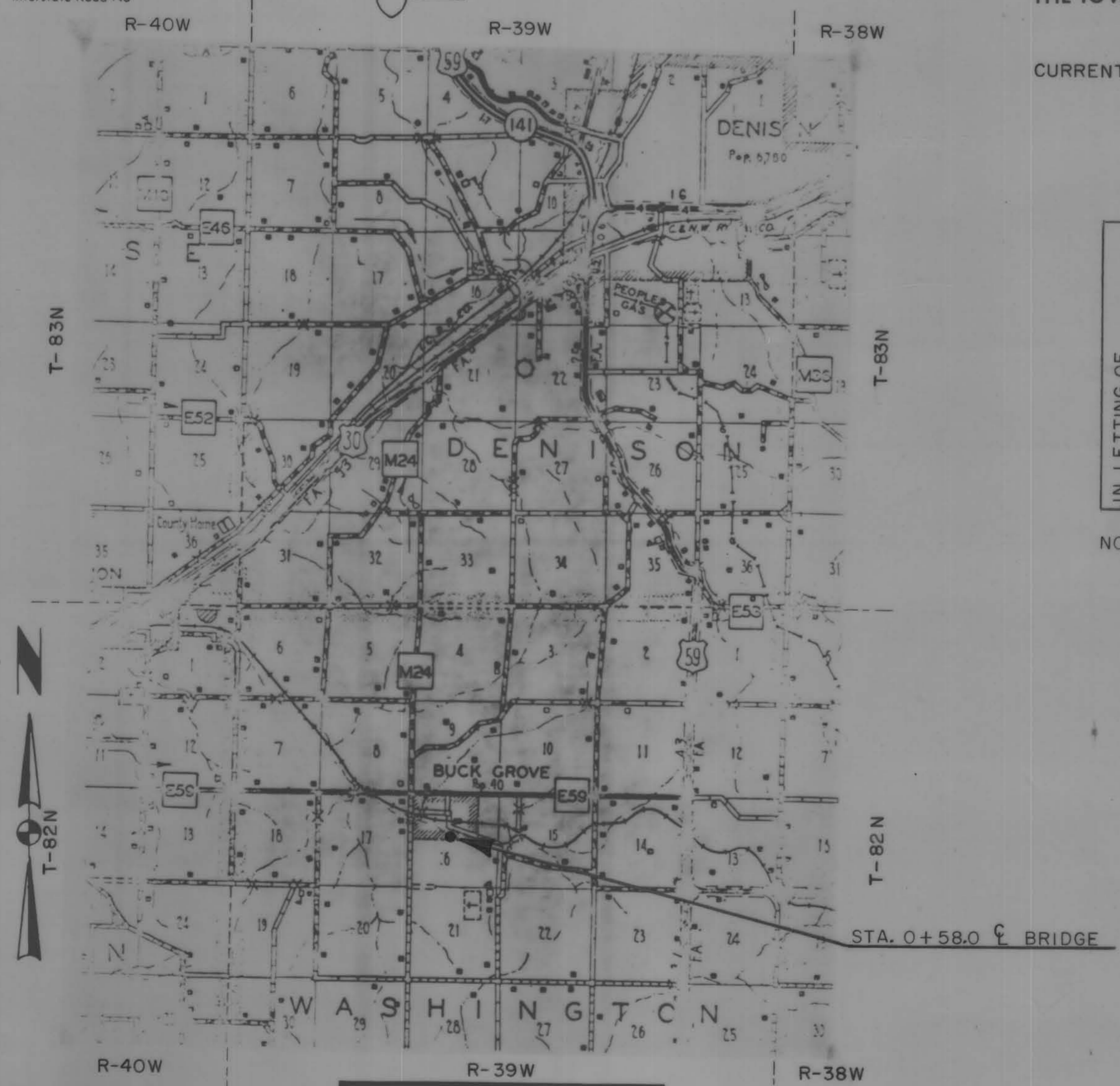
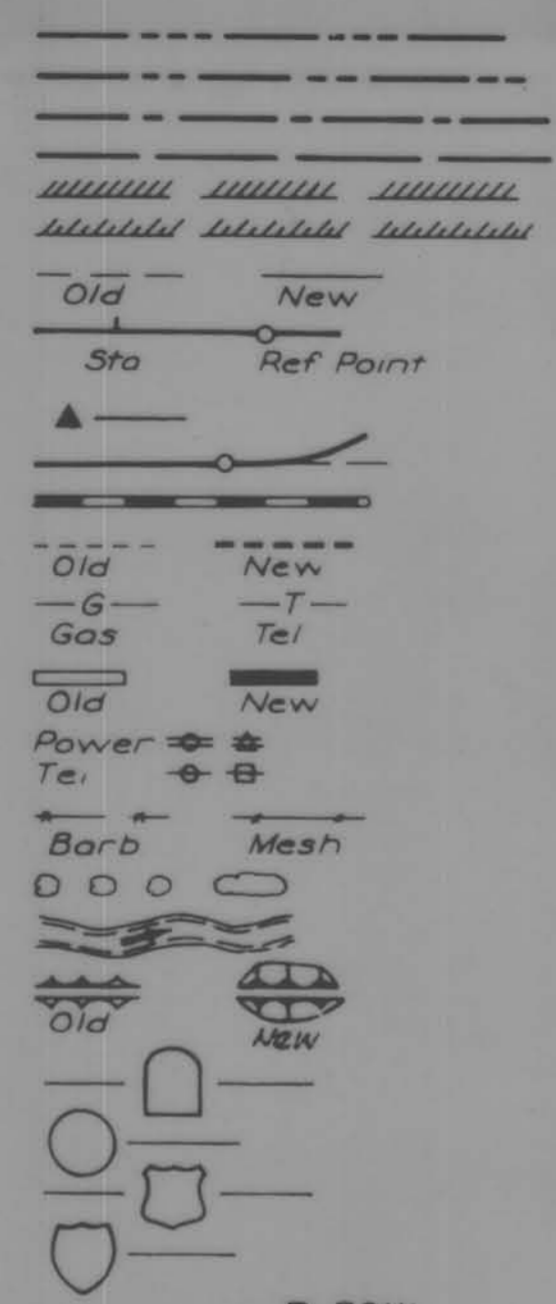
#### MILEAGE SUMMARY

70'-0" = 0.01326 MILE

LETTING DATE

#### CONVENTIONAL SIGNS

- State Line
- Co. Line
- Twp. Line
- Sec. Line
- Corp. Line
- Urban Bdry
- R.O.W. Lines
- Survey Line
- Sec. Corner
- Profile Grade
- Railroad
- Field Tile
- Underground Lines
- Culverts
- Utility Poles
- Fences
- Trees Or Brush
- Stream
- Dike
- County Road No.
- Primary Road No.
- U. S. Road No.
- Interstate Road No.



PROJECT NO. L 73-1	O.E.R. PROJECT NO.4	STA. 0+58.0
SEC. 16		WASHINGTON TOWNSHIP
RE-ERECTION 70'x16' BOWSTRING TRUSS		
ESTIMATE OF QUANTITIES		
ITEM NO.	ITEM	TOTALS
1	TREATED TRESTLE PILING (DRIVE ONLY) 12@ 35'	420 L.F.
2	RE-ERECT TRUSS, CAPS & BACKWALLS AS PER PLAN.	LUMP SUM
3	EXCAVATION CLASS 20	6 CU. YDS.

NOTE: COUNTY TO FURNISH ALL MATERIALS, EXCEPT DRIVING SHOES IF NECESSARY FOR PENETRATION OF PILING.

APPROVED

[Signature Box]

[Signature Box]

*Clarence Stammer*

*W. O. Stoll*

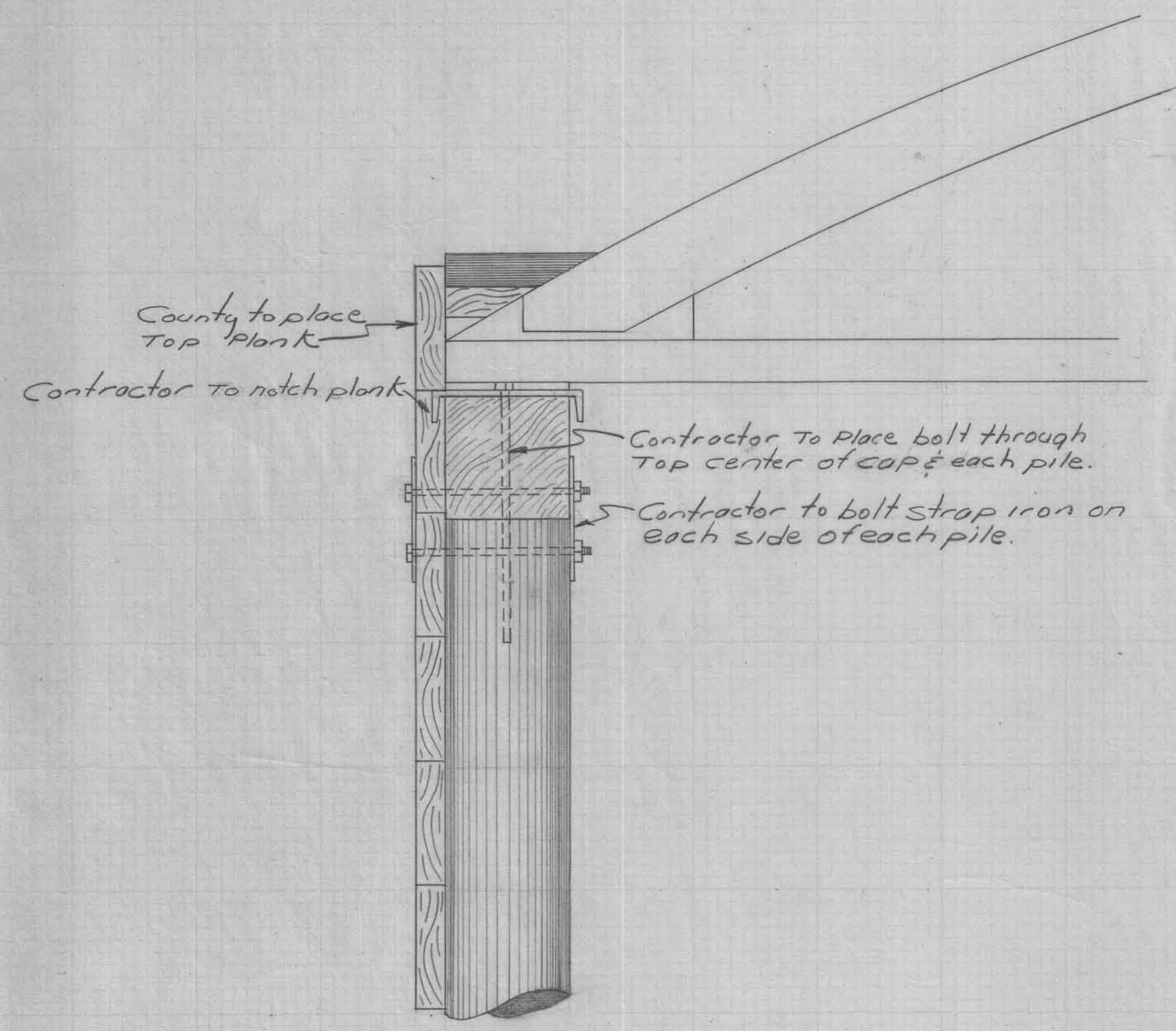
*Garth Fuller*  
BOARD OF SUPERVISORS

APPROVED  
[Signature Box]  
ASSISTANT DISTRICT ENGINEER      DATE  
SECONDARY ROADS  
IOWA HIGHWAY COMMISSION

I HEREBY CERTIFY THAT THIS PLAN WAS PREPARED UNDER MY SUPERVISION AND THAT ENGINEERING DECISIONS WITH REGARD TO THE DESIGN WERE MADE BY ME OR BY OTHER DULY REGISTERED PROFESSIONAL ENGINEERS UNDER THE LAWS OF THE STATE OF IOWA.  
IOWA REGISTRATION NUMBER 5798 DATE

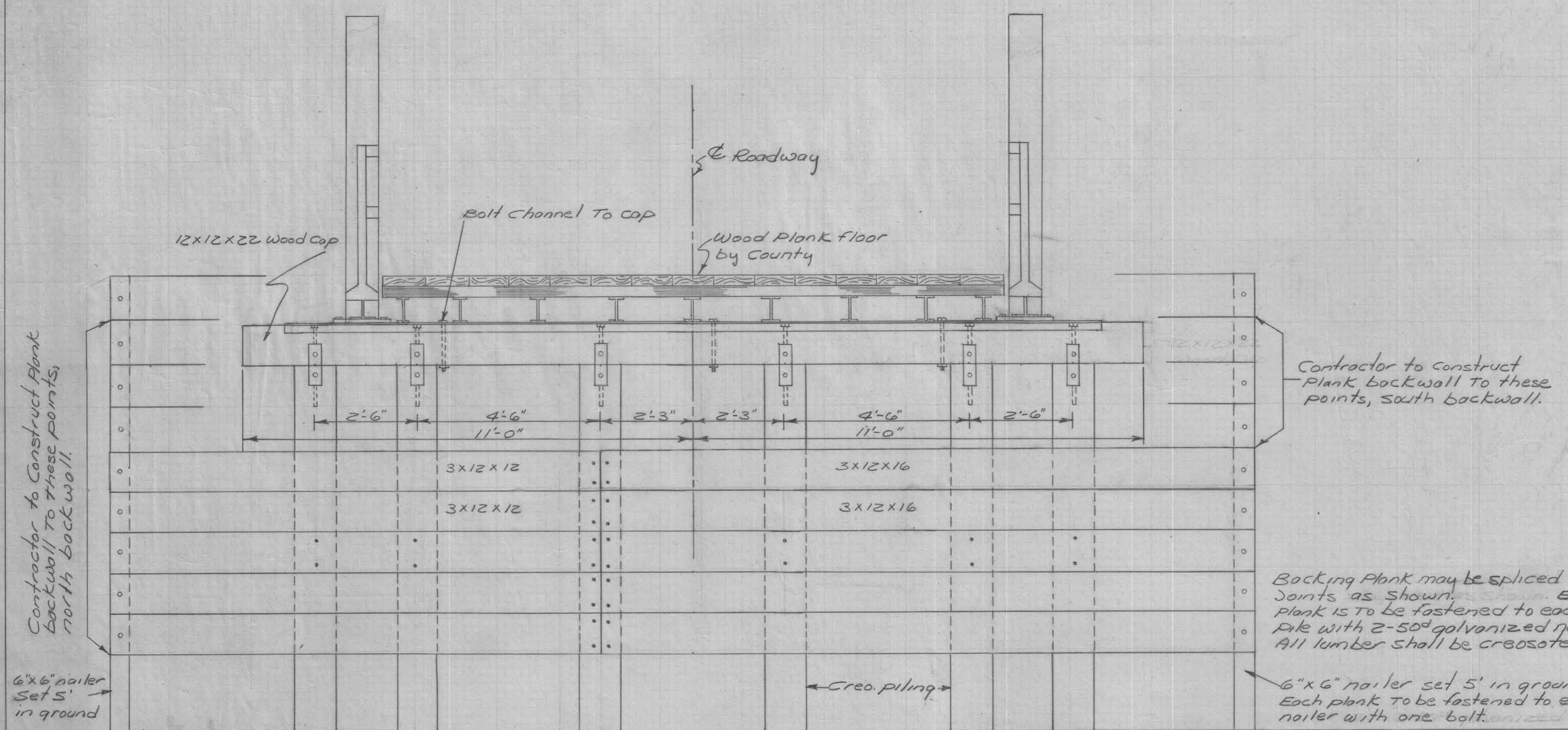
APPROVED  
[Signature Box]  
DEPUTY CHIEF ENGINEER  
IOWA HIGHWAY COMMISSION      DATE

152221

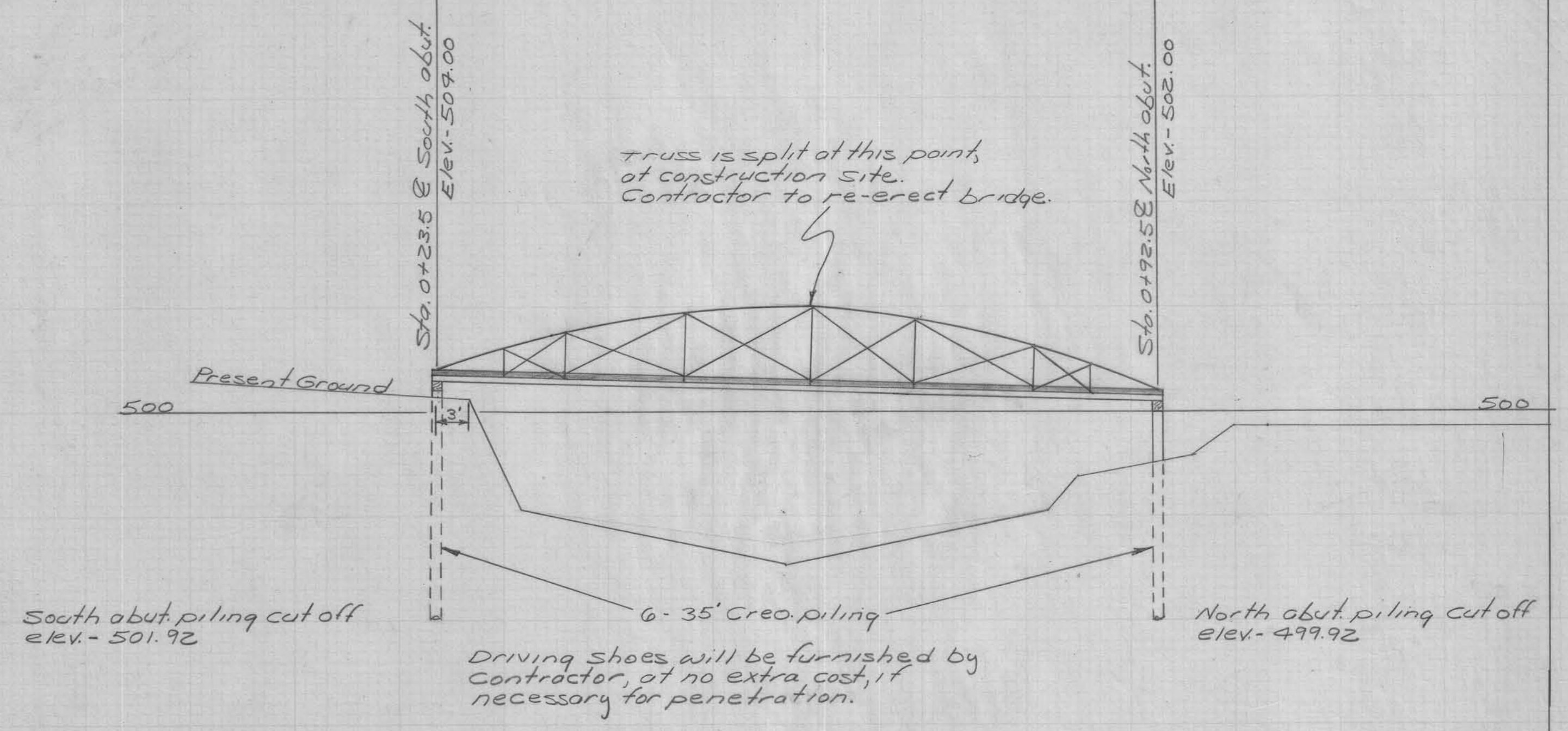


Hydraulic Data:  
 D.A. = 5.62 Sq. mi.  
 $Q^{50} = 344 A^{.572} S^{.318}$   
 $= (344)(5.62)^{.572} (74.80)^{.318}$   
 $= (344)(2.68)(394) = 3632 \text{ c.f.s.}$   
 $Q = V.A.$   
 $Q = (70)(656) = 4592 \text{ c.f.s. @ elev-500.0}$

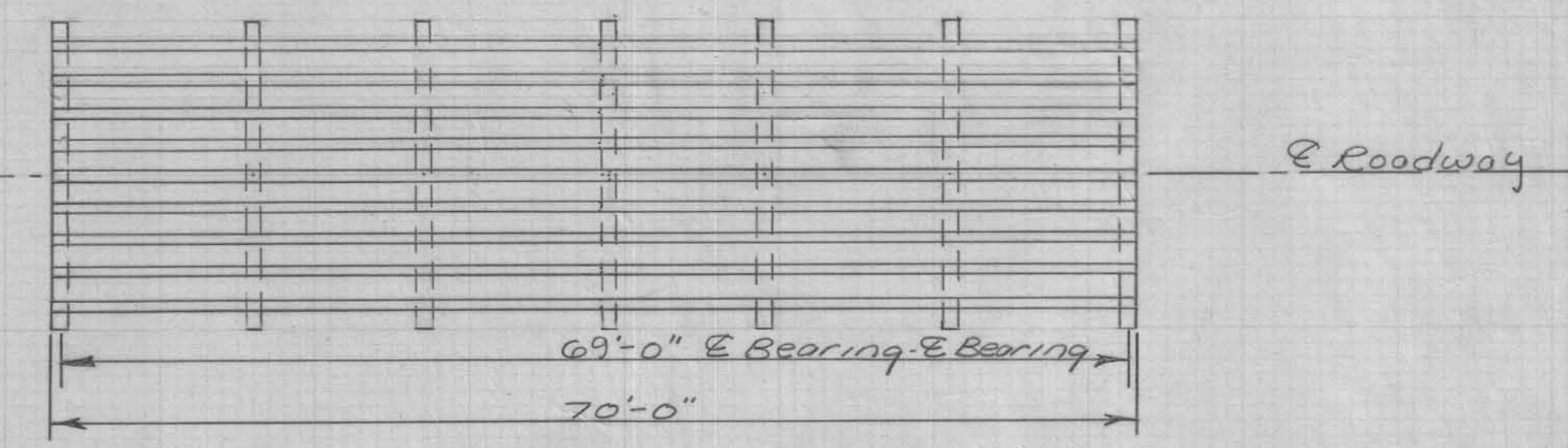
Note: County to furnish all materials, except driving shoes.



Backing Plank may be spliced with joints as shown. Each plank is to be fastened to each pile with 2-50# galvanized nails. All lumber shall be creosoted.  
 6"x6" nailer set 5' in ground. Each plank to be fastened to each nailer with one bolt.



Driving shoes will be furnished by Contractor, at no extra cost, if necessary for penetration.



Estimate of Quantities		
Item No.	Item	TOTALS
1	Treated Trestle Piling (drive only) 12 @ 35'	420 L.F.
2	RE-ERECT TRUSS, CAPS & BACKWALLS As per Plan.	Lump sum
3	Excavation Class 20	6 cu. yds.

Note: County to furnish all materials, except driving shoes if necessary for penetration of piling.

DESIGN FOR  
 RE-ERECTION 70'x16' BOW STRING TRUSS  
 Wood floor over Buck Creek Wood piling  
 Near Center Section 16, Washington Township E-39W  
 T-82N  
 Project No. L73-1(1) (O.E.P. Project No. 4)  
 Crawford County, Iowa