

INDEXED \_\_\_\_\_  
FOLLOW UP \_\_\_\_\_  
PROOFED \_\_\_\_\_  
SCANNED \_\_\_\_\_

REC004366



Crawford County Recorder Denise Meeves  
FEE BOOK 2005-0020 1/03/2005 @ 03:33PM  
PIC ELAT CORNER CERBook: Page:05-0020 #: 1  
Total Fees: \$.00

PREPARED BY: MICKAEL BERNDT  
CRAWFORD COUNTY ENGINEERS OFFICE - COURTHOUSE - DENISON, IA. - 712-263-2449

# UNITED STATES PUBLIC LAND SURVEY CORNER CERTIFICATE OF

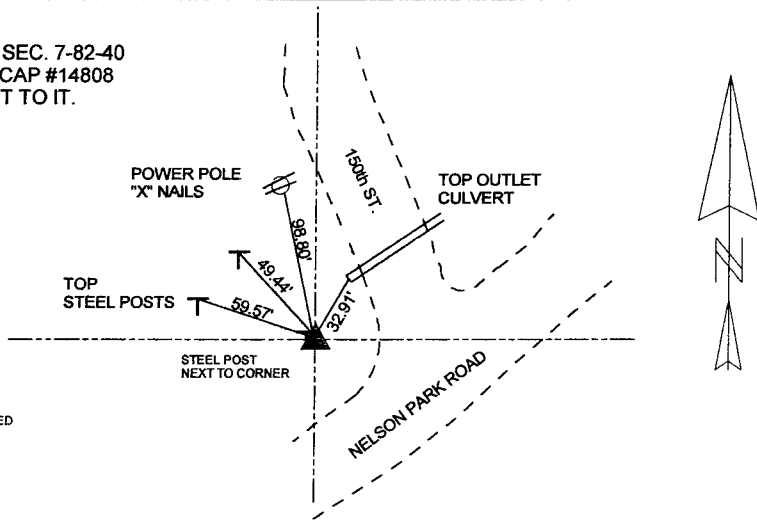
LAND SURVEY MONUMENT SITUATED IN UNION TOWNSHIP THE NORTHWEST CORNER  
SW1/4SW1/4 OF SECTION 7, T-82N, R-40W OF THE 5TH P.M. CRAWFORD COUNTY, IOWA.

PREVIOUSLY RECORDED AS INSTRUMENT #2003-0176

## MONUMENT DESCRIPTION AND REMARKS

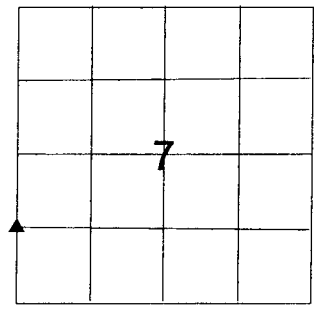
NORTHWEST CORNER SW1/4SW1/4 SEC. 7-82-40  
THE ROAD WAS GRADED DURING THE SUMMER OF 2004, PROJECT NO. FM-CO24(60)--55-24. THE CORNER WAS  
TIED OFF AND SET BACK AFTER THE GRADING PROJECT WAS COMPLETED.

NORTHWEST CORNER SW1/4SW1/4 SEC. 7-82-40  
SET 5/8" X 14" REBAR WITH YELLOW CAP #14808  
TO SURFACE WITH STEEL POST NEXT TO IT.



ALL DISTANCES ARE SLOPED CHAINED

CORNER: NORTHWEST CORNER  
SW1/4SW1/4  
SECTION: 7  
TOWNSHIP: 82N  
RANGE: 40W



I HEREBY CERTIFY THAT THIS LAND SURVEYING DOCUMENT WAS PREPARED  
AND THE RELATED SURVEY WORK WAS PERFORMED BY ME OR UNDER MY  
DIRECT PERSONAL SUPERVISION AND THAT I AM A DULY LICENSED LAND  
SURVEYOR UNDER THE LAWS OF THE STATE OF IOWA.

*Michael F. Berndt*  
MICKAEL F. BERNDT

1-3-05  
DATE

IA. LICENSE NO. 14808

EXP. DATE 12-31-06

