

INDEX \_\_\_\_\_  
 SCAN \_\_\_\_\_  
 FOLLOW UP \_\_\_\_\_  
 PROOF \_\_\_\_\_

Instrument #: 2022-0090  
 01/10/2022 09:30:10 AM Total Pages: 1  
 PLC PLAT COR CERT  
 Recording Fee: \$7.00 Transfer Tax: \$0  
 Denise Meeves, Recorder, Crawford County Iowa



WILKE LAND SURVEYING INC. 401 1800th Street Panama, Iowa 51562 (712)489-2898

**UNITED STATES PUBLIC LAND SURVEY CORNER CERTIFICATE**

SECTION 15 TOWNSHIP 82N RANGE 41W COUNTY Crawford

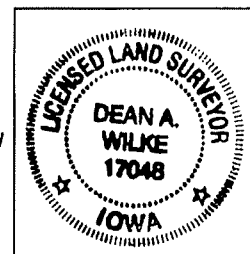
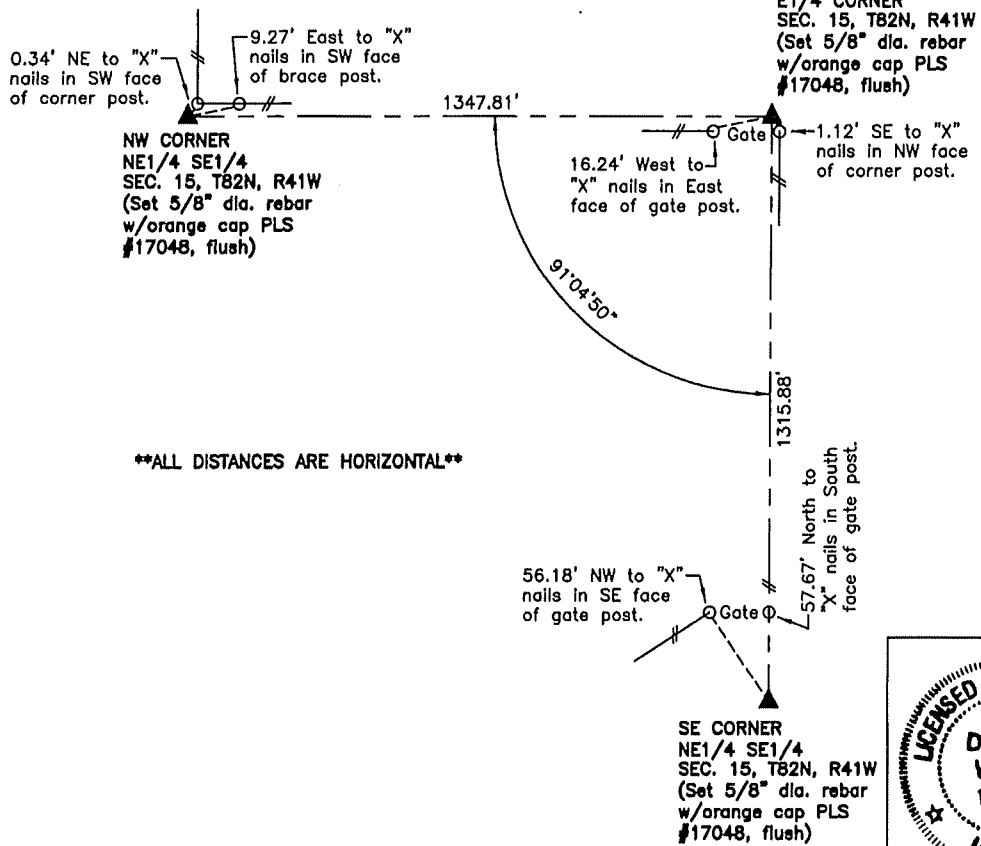
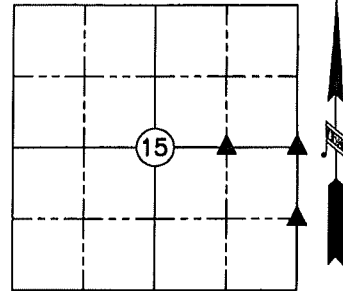
Monument Description and Remarks:

Reason for Certificate: Survey within the Section

E1/4 CORNER – Set a 5/8" diameter by 24" long rebar with an orange cap PLS #17048 (flush) on line between the NE Corner & the SE Corner NE1/4 SE1/4, and at proportionate distances between said Corners. The set monument is ±0.7' West of the fence South and ±1.1' North of the fence West.

SE CORNER NE1/4 SE1/4 – Set a 5/8" diameter by 24" long rebar with an orange cap PLS #17048 (0.6' deep) in line with the old fence North (the fence South has been removed), and at equal distances from the E1/4 Corner and the SE Corner.

NW CORNER NE1/4 SE1/4 – Set a 5/8" diameter by 24" long rebar with an orange cap PLS #17048 (flush) on the Southwest side of a corner post with fences North & East.



List Corners to be Indexed			
Corner	Section	Twp.	Range
E1/4 CORNER	15	82N	41W
SE CORNER NE1/4 SE1/4	15	82N	41W
NW CORNER NE1/4 SE1/4	15	82N	41W

I hereby certify that this land surveying document was prepared and the related survey work was performed by me or under my direct personal supervision and that I am a duly licensed Land Surveyor under the laws of the State of Iowa.

*Dean A. Wilke* 1/06/22  
 Dean A. Wilke Date

License number 17048  
 My license renewal date is December 31, 2023  
 Pages or sheets covered by this seal: This page only