

98 OCT 13 AM 8:48

INST. NO. 8-3022  
DENISE NEEVES, RECORDER  
*Denise Neeves*  
FEE \$6.00

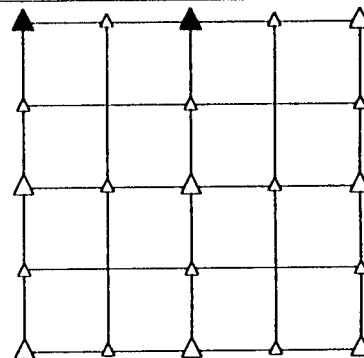
PREPARED BY - TERENCE E. CRAWFORD - SUNDQUIST ENGINEERING - 120 S. MAIN DENISON, IOWA 51442 - PHONE (712)263-8118

### UNITED STATES PUBLIC LAND SURVEY CORNER CERTIFICATE OF

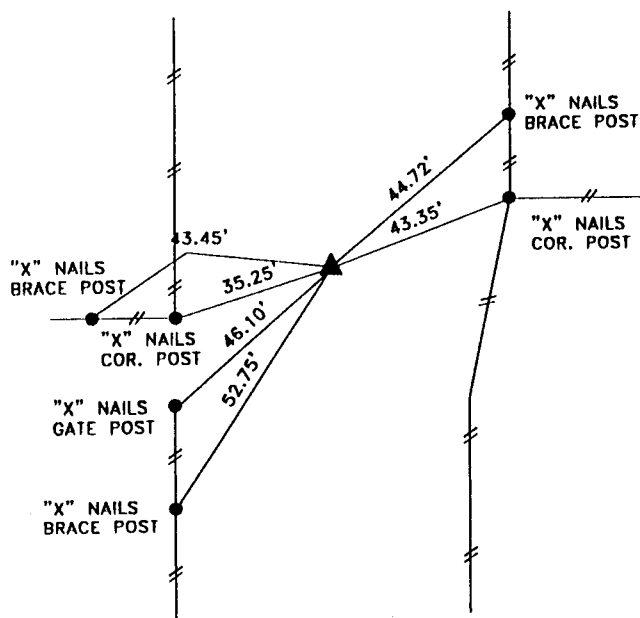
LAND SURVEY MONUMENT SITUATED IN SECTION 19, T 82 N, R 41 W OF  
THE 5TH P.M., CRAWFORD COUNTY, IOWA.  
PREVIOUSLY RECORDED IN BOOK           , PAGE           , OTHER           

#### MONUMENT DESCRIPTION AND REMARKS

- NW CORNER - SET 5/8" IRON PIN W/CAP #8893, 0.3' DEEP  
RESET FROM OLD MONONA COUNTY TIES
- N1/4 CORNER - SET 5/8" IRON PIN W/CAP #8893, 0.3' DEEP  
SET AT INTERSECTION OF FENCE LINES SOUTH  
AND WEST

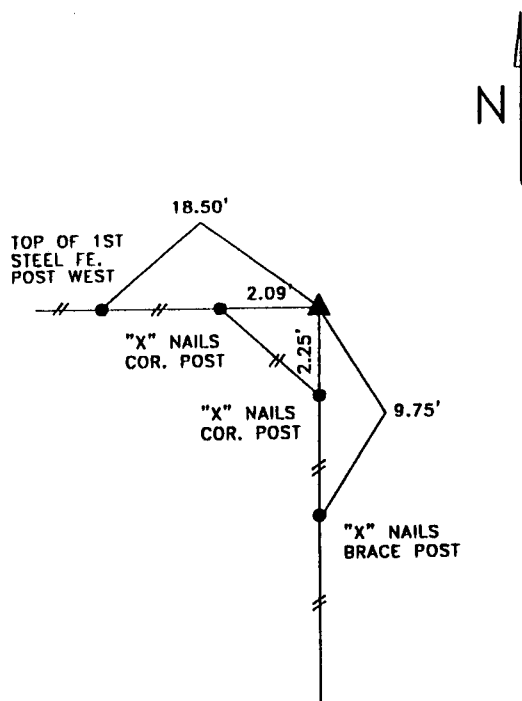


#### PLAN VIEW SHOWING RELATIVE LOCATION OF MONUMENT AND REFERENCE POINTS.



DISTANCES SLOPE CHAINED

NW CORNER SECTION 19-82-41



DISTANCES SLOPE CHAINED

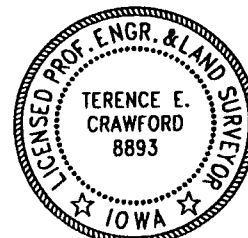
N1/4 CORNER SECTION 19-82-41

I HEREBY CERTIFY THAT THE SURVEY WORK WAS COMPLETED AND THIS LAND SURVEYING DOCUMENT WAS PREPARED BY ME OR UNDER MY DIRECT SUPERVISION AND THAT I AM A DULY LICENSED LAND SURVEYOR UNDER THE LAWS OF THE STATE OF IOWA.

*Terence E. Crawford* SEP 18 1998  
TERENCE E. CRAWFORD DATE

IA LICENSE NO. 8893

EXP. DATE DECEMBER 31, 1999



SE PROJECT NO. 2348