

INDEXED _____
FOLLOW UP WCH
PROCESSED _____

STATE OF IOWA
CRAWFORD COUNTY

2002 MAR 25 AM 10:11

INST. NO. 2002-1085
DENISE HEEVES, RECORDER
Denise Heeves
REC. 6/20

WARDER C. HILLHOUSE, JR. MHF ENGINEERING P.C. 300 W. MCKINLEY JEFFERSON, IA. (515)386-4101

UNITED STATES PUBLIC LAND SURVEY CORNER CERTIFICATE OF

Land Survey Monuments in Section 06, Township 82, Range 40, of the Fifth Principal Meridian, CRAWFORD County, Iowa.
Previously recorded in _____ in County Recorder's Office.

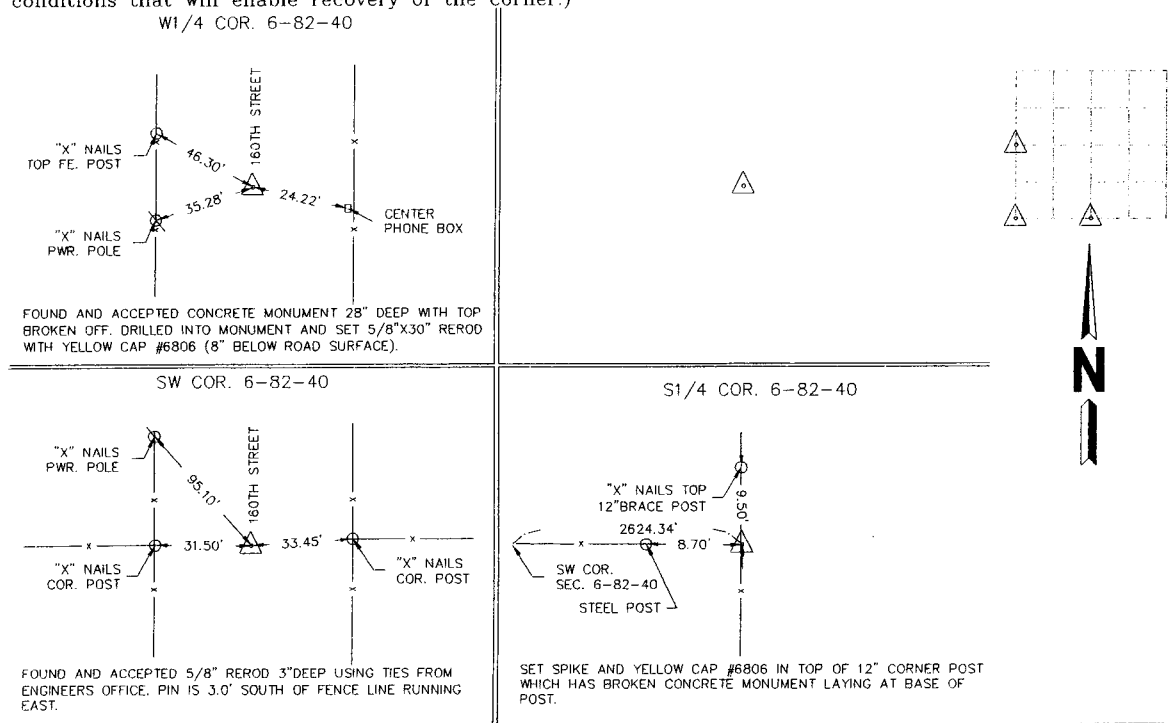
(book, page, document number, etc.)

(Show reason for preparing this certificate, the evidence and detailed procedures used in establishing the corner positions and monumentation found or placed.)

Monument Description and Remarks: CORNERS LOCATED FOR SURVEY WORK IN SECTION.

PLAN - VIEW

(Show a minimum of three reference ties to durable physical objects, relevant monuments and physical conditions that will enable recovery of the corner.)



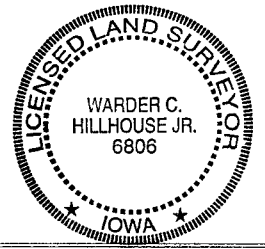
I hereby certify that land surveying document and the related survey work was performed by me or under my direct personal supervision and that I am a duly licensed land surveyor under the laws of the state of Iowa.

Signature: Warder C. Hillhouse, Jr.
Name typed or printed: Warder C. Hillhouse, Jr.

Date: 3/22/02 Lic. No. 6806

License Renewal Dec. 31, 2003
Date Surveyed: 03/20/02

Seal



List Corners to be Indexed			
Corners	Section	Twp	Range
W1/4 COR.	6	82	40
S1/4 COR.	6	82	40
SW COR.	6	82	40

File No. 02032-1

M.H.F. ENGINEERING, P.C.
ENGINEERS - LAND SURVEYORS
Jefferson, Iowa 50129 Ph. (515)386-4101