

20-21 C-80-110-Boop-214x6' hole

on N side fence, 110' find

157' car on side of car post. Did from

SS car 2-1320-2648 This class chairing the Henry

6664 plan Set flunk

372 S of E post

313 W of 4th boarder in clamp

513 E of 3rd boarder

12.5 1/3 gate post

17 Found 1 foot bar wire pieces
20 of steel hammer head in road

surface lowered and set C.M.

ties from x-spts in car posts

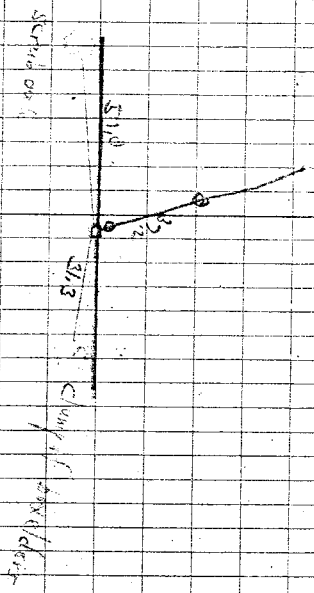
13.0 W from car post

car is on S side of W gate post

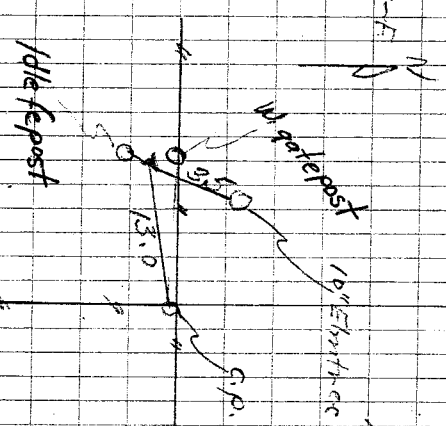
on N side of idle post

3.5 S from 10' E bn face

27-634-S



20-87-F



Found 12-2-39