

INDEXED
 FOLLOW UP
 PROOFED
 SCANNED



Crawford County Recorder Denise Meeves
 Fee Book 2007-1437 REC014634
 05/29/2007 @1255PM # Pages 1
 PLC PLAT CORNER CER
 Total Fees: \$7.00

WARDER C. HILLHOUSE, JR. MHF ENGINEERING P.C. 300 W. MCKINLEY JEFFERSON, IA. (515)386-4101

UNITED STATES PUBLIC LAND SURVEY CORNER CERTIFICATE OF

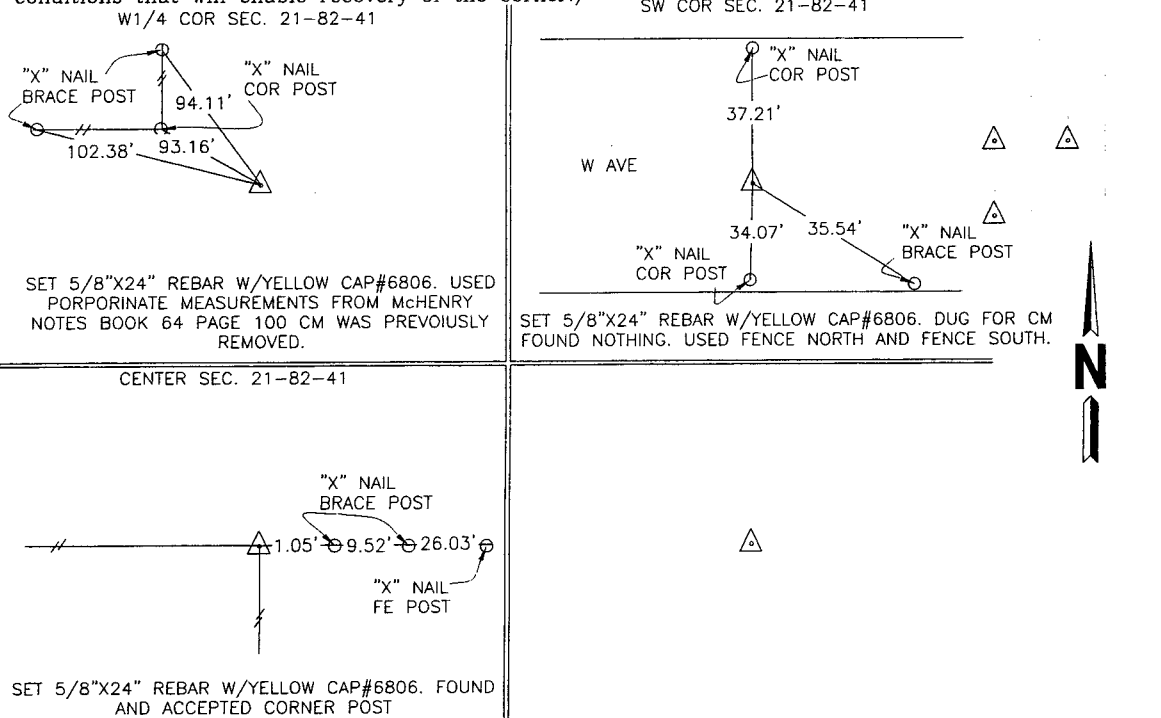
Land Survey Monuments in Section 21, Township 82, Range 41, of the Fifth Principal Meridian, CRAWFORD County, Iowa.
 Previously recorded in _____ in County Recorder's Office.
 (book, page, document number, etc.)

(Show reason for preparing this certificate, the evidence and detailed procedures used in establishing the corner positions and monumentation found or placed.)

Monument Description and Remarks:

PLAN - VIEW

(Show a minimum of three reference ties to durable physical objects, relevant monuments and physical conditions that will enable recovery of the corner.)



I hereby certify that this land surveying document and the related survey work was performed by me or under my direct personal supervision and that I am a duly licensed land surveyor under the laws of the state of Iowa.

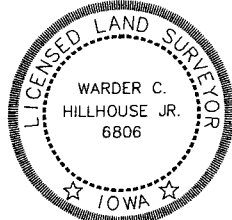
Signature: Warder C. Hillhouse Jr.
 Warder C. Hillhouse, Jr.

Date: 5/29/07 Lic. No. 6806

License Renewal Dec. 31, 2007

Date Surveyed: 05/21/07

Seal



List Corners to be Indexed

Corners	Section	Twp	Range
W1/4 COR	21	82	41
SW COR	21	82	41
CENTER	21	82	41

File No. 07003-1



M.H.F. ENGINEERING, P.C.
 ENGINEERS - LAND SURVEYORS
 Jefferson, Iowa 50129 Ph. (515)386-4101