

FILED DEPT. OF SURVEY, IOWA
 CRAWFORD COUNTY
 2001 APR 27 PM 12:47 INDEXED *ME*
 DIST. NO. 2001-1076
 DENISE HEEVES, RECORDER
Denise Heeves
 FEE \$ 6.00

PREPARED BY: J. SCOTT SHEVEL L.S. KUEHL AND PAYER LTD., 423 WEST MAIN ST., SAC CITY, IA. 50583 PH. (712)662-7859

UNITED STATES PUBLIC LAND SURVEY CORNER CERTIFICATE
OF

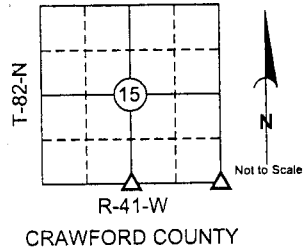
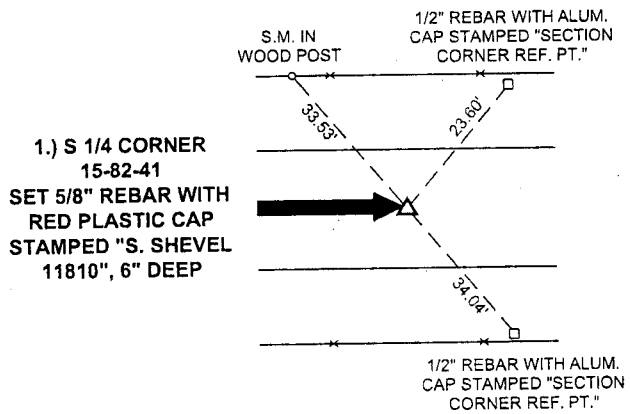
LAND SURVEY MONUMENTS SITUATED IN SECTION 15, TOWNSHIP 82 NORTH,
 RANGE 41 WEST, OF THE 5TH PRINCIPAL MERIDIAN, CRAWFORD COUNTY, IOWA.
 PREVIOUSLY RECORDED IN BOOK _____ PAGE _____

MONUMENT DESCRIPTION AND REMARKS:

- 1.) S 1/4 CORNER 15-82-41: NO RECORD OF CORNER; SET 5/8" REBAR WITH RED PLASTIC CAP STAMPED "S. SHEVEL 11810", 6" DEEP, EQUIDISTANT BETWEEN SW & SE CORNERS AND AT SPLIT OF R.O.W. FENCES
- 2.) SE CORNER 15-82-41: MR. WRIGHT, THE PREVIOUS OWNER OF PART OF THE NW 1/4 OF SECTION 23, REMEMBERED SEEING THE CONCRETE MONUMENT CALLED FOR IN THE COUNTY ENGINEER'S NOTES LAYING IN THE CREEK; USED REMAINING FENCE LINE

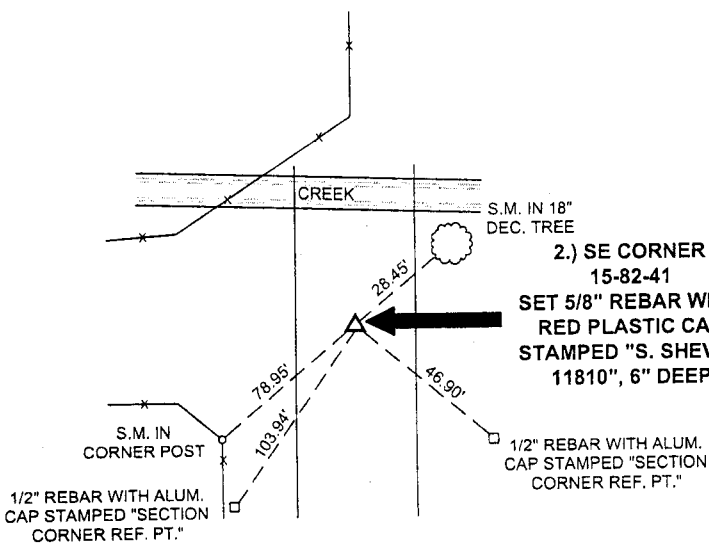
EVIDENCE FROM COUNTY ENGINEER'S NOTES TO SET 5/8" REBAR WITH RED PLASTIC CAP STAMPED "S. SHEVEL 11810", 6" DEEP

PLAN - VIEW

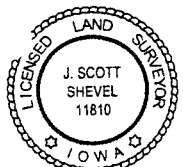


**1.) S 1/4 CORNER
 15-82-41
 SET 5/8" REBAR WITH
 RED PLASTIC CAP
 STAMPED "S. SHEVEL
 11810", 6" DEEP**

**2.) SE CORNER
 15-82-41
 SET 5/8" REBAR WITH
 RED PLASTIC CAP
 STAMPED "S. SHEVEL
 11810", 6" DEEP**



S.M. = SURVEY MARKER
 PLASTIC REFERENCE DISK
 AS SHOWN BELOW



I hereby certify that this land surveying document was prepared and the related survey work was performed by me or under my direct personal supervision and that I am a duly licensed Land Surveyor under the laws of the State of Iowa.

J. Scott Shevel 4/12/01
 J. Scott Shevel
 License Number 11810
 My license renewal date is December 31, 2001
 Pages covered by this seal 1

Date:

List Corners to be Indexed

Corners	Section	Township	Range
1) S 1/4	15	82	41
2) SE	15	82	41

PN: 010531
 DRAWN: JMK