

Crawford County Recorder
Denise Meeves
Fee Book 2013-0800

04/05/2013 10:59AM
PLC PLAT CORNER CER # Pages: 1
Book: Page: \$7.00
Total Fees:

WILKE LAND SURVEYING INC. 401 1800th Street Panama, Iowa 51582 (712)499-2000

UNITED STATES PUBLIC LAND SURVEY CORNER CERTIFICATE

SECTION 25 TOWNSHIP 82N RANGE 41W COUNTY CRAWFORD

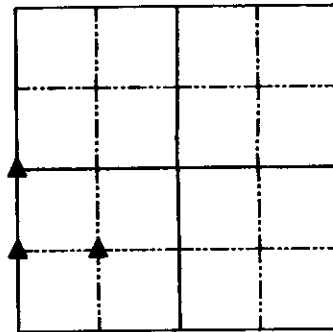
Monument Description and Remarks: Reason for Certificate: (No record Certificate)

W1/4 CORNER - Dug and probed 5' deep extensively but found nothing. Set 5/8" dia. by 24" rebar with orange cap PLS #17048 (0.5' deep) on line with fence to the West using the WPA tie distance of (27.6') off of rotten railroad tie corner post. Corner is 5.0' West of center line of county road.

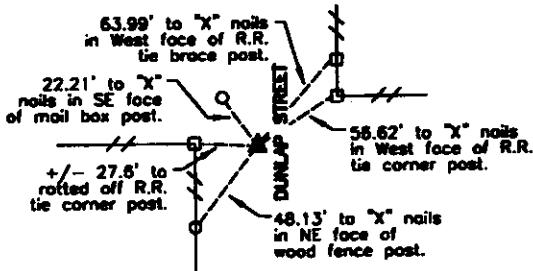
NW CORNER SW1/4 SW1/4 - Set 5/8" dia. by 24" rebar with orange cap PLS #17048 (0.4' deep) on the West line of the Southwest Quarter and in line with fence to the East.

NE CORNER SW1/4 SW1/4 - Set 5/8" dia. by 24" rebar with orange cap PLS #17048 (flush with surface) on the south side of a railroad tie post in line with fences North, East, South, and West.

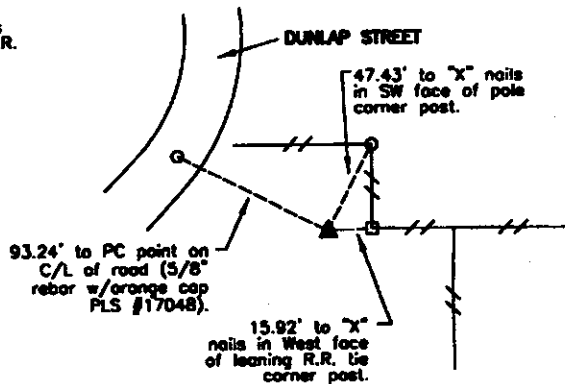
SECTION 25



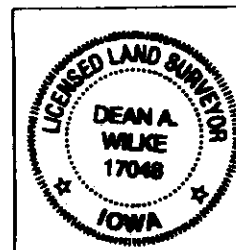
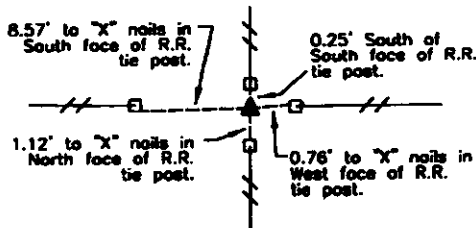
W1/4 CORNER
SEC. 25, T82N, R41W
(Set 5/8" dia. by 24" rebar
w/orange cap PLS #17048,
0.5' deep)



NW CORNER SW1/4 SW1/4
SEC. 25, T82N, R41W
(Set 5/8" dia. by 24" rebar
w/orange cap PLS #17048, 0.4' deep)



NE CORNER SW1/4 SW1/4
SEC. 25, T82N, R41W
(Set 5/8" dia. by 24" rebar
w/orange cap PLS #17048,
flush with surface)



List Corners to be Indexed			
Corner	Section	Twp.	Range
W1/4 CORNER	25	82N	41W
NW CORNER SW1/4 SW1/4	25	82N	41W
NE CORNER SW1/4 SW1/4	25	82N	41W

I hereby certify that this land surveying document was prepared and the related survey work was performed by me or under my direct personal supervision and that I am a duly Licensed Land Surveyor under the laws of the State of Iowa.

Dean A. Wilke 4/03/13
Dean A. Wilke Date

License number 17048
My license renewal date is December 31, 2013
Pages or sheets covered by this seal: This page only