

INDEXED _____
 FOLLOW UP _____
 PROOFED _____
 SCANNED _____

Instrument #: 2021-0827
 04/15/2021 09:32:02 AM Total Pages: 1
 PLC PLAT COR CERT
 Recording Fee: \$7.00 Transfer Tax: \$0
 Denise Meeves, Recorder, Crawford County Iowa



WILKE LAND SURVEYING INC. 401 1800th Street Panama, Iowa 51562 (712)489-2898

UNITED STATES PUBLIC LAND SURVEY CORNER CERTIFICATE

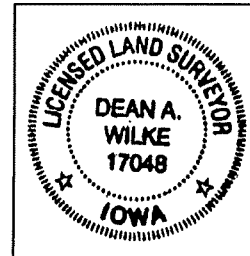
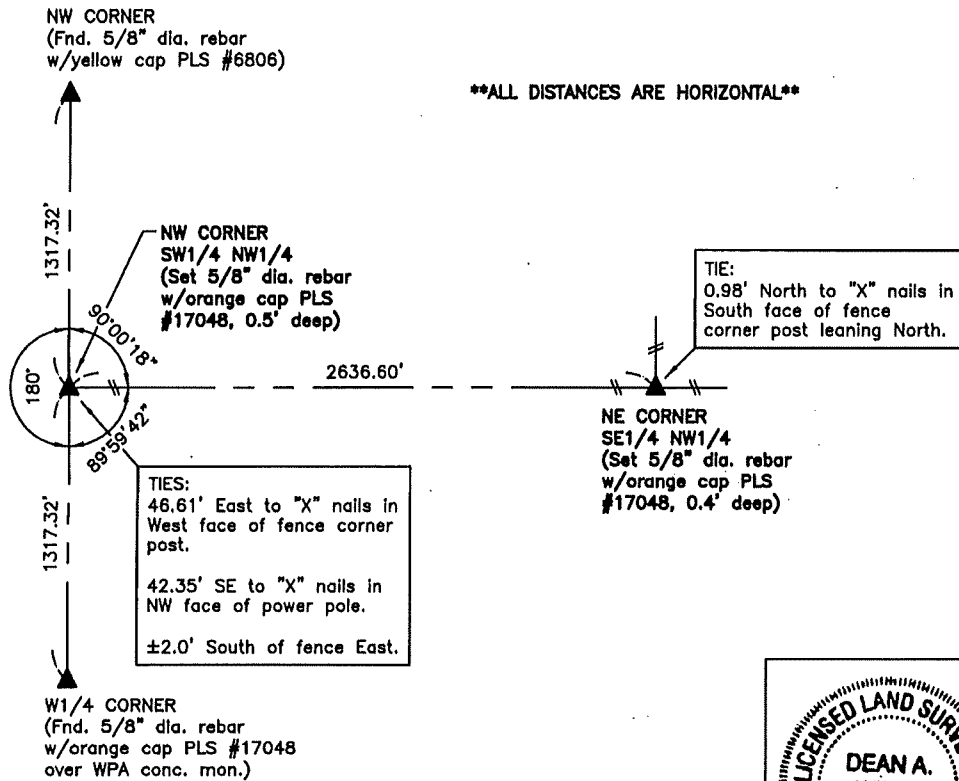
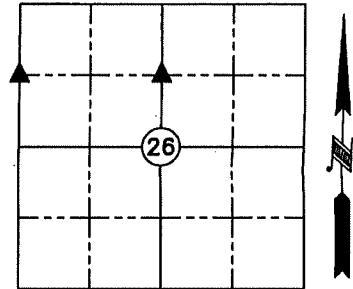
SECTION 26 TOWNSHIP 82N RANGE 41W COUNTY Crawford

Reason for Certificate: Survey in the SW1/4 NW1/4

Monument Description and Remarks:

NW CORNER SW1/4 NW1/4 - Set a 5/8" diameter by 24" long rebar with an orange cap PLS #17048 (0.5' deep) at the midpoint of the West line of the NW1/4. The set monument fits well with the centerline of O'Banion Road North & South, and is ±2' South of the fence East.

NE CORNER SE1/4 NW1/4 - Set a 5/8" diameter by 24" long rebar with an orange cap PLS #17048 (0.4' deep) at equal distances between the found N1/4 Corner monument & the calculated Center of Section, and in line with the fence North. The set monument fits well with fences East, West, & North.



I hereby certify that this land surveying document was prepared and the related survey work was performed by me or under my direct personal supervision and that I am a duly licensed Land Surveyor under the laws of the State of Iowa.

Dean A. Wilke 4/08/2021
 Dean A. Wilke Date

License number 17048

My license renewal date is December 31, 2021

Pages or sheets covered by this seal: This page only

List Corners to be Indexed			
Corner	Section	Twp.	Range
NW CORNER SW1/4 NW1/4	26	82N	41W
NE CORNER SE1/4 NW1/4	26	82N	41W