

MS
MS
MS
MS

Crawford County Recorder
Denise Meeves
Fee Book 2008-3353
12/16/2008 @03:06PM
PLC PLAT CORNER CER # Pages: 1
Book: Page: \$0.00
Total Fees:

PREPARED BY: MICKAEL F. BERNDT - CRAWFORD COUNTY ENGINEER'S OFFICE - COURTHOUSE - DENISON, IA. - 712-263-2449

**UNITED STATES PUBLIC LAND SURVEY CORNER CERTIFICATE
OF**

**LAND SURVEY MONUMENT SITUATED IN BOYER TOWNSHIP, THE WEST 1/4 CORNER
OF SECTION 27, T-82N, R-41W OF THE FIFTH P.M. CRAWFORD COUNTY, IOWA.**

PREVIOUSLY RECORDED AS NO.

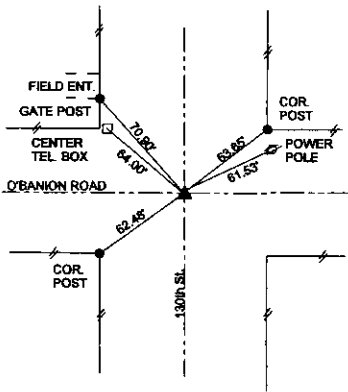
MONUMENT DESCRIPTION AND REMARKS

WEST 1/4 CORNER SEC. 27-82-41

DATE SET: 10-21-08

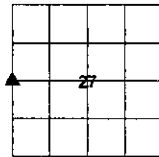
FOUND CARRIAGE BOLT TO SURFACE. THE BOLT WAS TIED OFF AND A 3" HMA OVERLAY WAS PLACED OVER EXISTING ASPHALT. USING PREVIOUS TIES A 1/2" DIA. X 4" CARRIAGE BOLT WAS SET BACK TO THE SURFACE.

WEST 1/4 CORNER SEC. 27-82-41



ALL DISTANCES ARE SLOPED CHAINED
ALL TIES ARE "X" NAILS UNLESS NOTED.

CORNER: WEST 1/4
SECTION: 27
TOWNSHIP: 82N
RANGE: 41W



CERTIFICATION:

I HEREBY CERTIFY THAT THIS LAND SURVEYING DOCUMENT WAS PREPARED AND THE RELATED SURVEY WORK WAS PERFORMED BY ME OR UNDER MY DIRECT PERSONAL SUPERVISION AND THAT I AM A DULY LICENSED LAND SURVEYOR UNDER THE LAWS OF THE STATE OF IOWA.

Michael F. Berndt 10-21-08
Signature Date of Survey

MICKAEL F. BERNDT 14808 Dec. 31, 2010
Typed Name L.S. No. License Renewal Date

Pages covered by this seal 1

