

Instrument #: 2014-1981  
 09/29/2014 11:07:47 AM Total Pages: 1  
 PLC PLAT CORNER CER  
 Recording Fee: \$7.00 Transfer Tax: \$0  
 Denise Heeves, Recorder, Crawford County Iowa



WILKE LAND SURVEYING INC. 401 1800th Street Pangma, Iowa 51562 (712)499-2698

## UNITED STATES PUBLIC LAND SURVEY CORNER CERTIFICATE

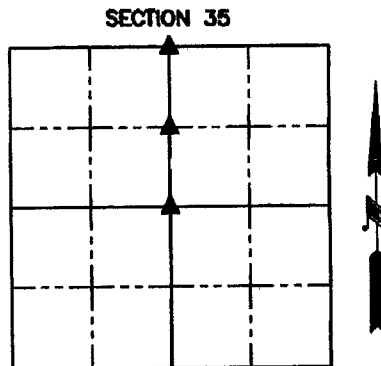
SECTION 35 TOWNSHIP 82N RANGE 41W COUNTY CRAWFORD  
 Reason for Certificate: (No record Certificate)

Monument Description and Remarks:

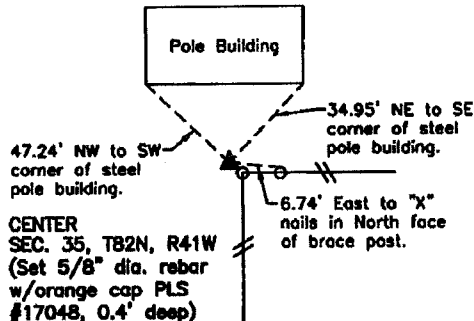
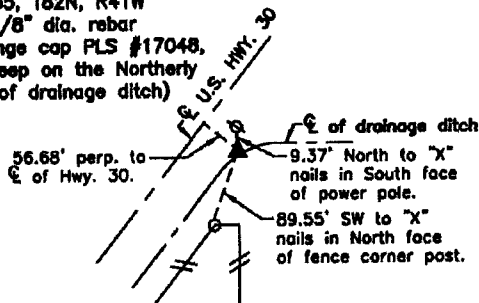
**N1/4 CORNER** - Set 5/8" diameter by 24" long rebar with orange cap PLS #17048 (0.5' deep) on the Northerly slope of a drainage ditch using WPA ties and a fence to the South. The WPA ties were referenced to the Southeasterly edge of U.S. Highway 30 in 1942. The existing centerline of U.S. Highway 30 was offset a 1942 lane width of 9' to establish the previous Southeasterly edge of the pavement.

**SW CORNER NW1/4 NE1/4** - Set 5/8" diameter by 24" long rebar with orange cap PLS #17048 (0.5' deep) at the midpoint of the West line of the NE1/4. Corner is 2.3' Southeasterly of the centerline of Dunlap Street.

**CENTER** - Set 5/8" diameter by 24" long rebar with orange cap PLS #17048 (0.4' deep) on the Northwest side of fence corner post with fences South and East.

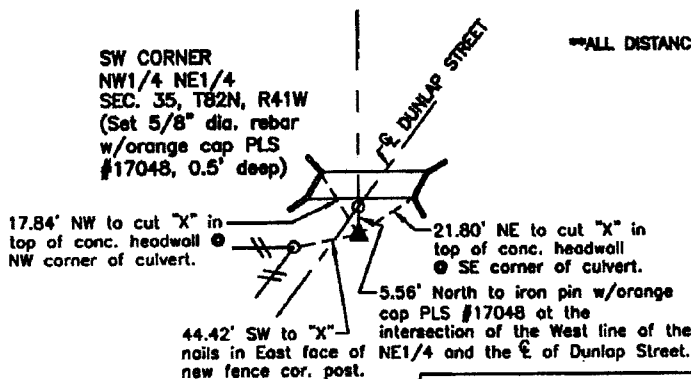


**N1/4 CORNER**  
 SEC. 35, T82N, R41W  
 (Set 5/8" dia. rebar w/orange cap PLS #17048, 0.5' deep on the Northerly slope of drainage ditch)

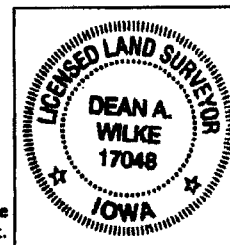


**CENTER**  
 SEC. 35, T82N, R41W  
 (Set 5/8" dia. rebar w/orange cap PLS #17048, 0.4' deep)

**SW CORNER**  
 NW1/4 NE1/4  
 SEC. 35, T82N, R41W  
 (Set 5/8" dia. rebar w/orange cap PLS #17048, 0.5' deep)



ALL DISTANCES ARE HORIZONTAL



List Corners to be Indexed			
Corner	Section	Twp.	Range
N1/4 CORNER	35	82N	41W
SW CORNER NW1/4 NE1/4	35	82N	41W
CENTER	35	82N	41W

I hereby certify that this land surveying document was prepared and the related survey work was performed by me or under my direct personal supervision and that I am a duly licensed Land Surveyor under the laws of the State of Iowa.

*Dean A. Wilke* 9/23/14  
 Dean A. Wilke Date

License number 17048

My license renewal date is December 31, 2015

Pages or sheets covered by this seal: This page only