

Crawford County Recorder
 Denise Meeves
Fee Book 2013-0799
 04/05/2013 010:56AM
 PLC PLAT CORNER CER # Pages: 1
 Book: Page: \$7.00
 Total Fees:

WILKE LAND SURVEYING INC. 401 1800th Street Panama, Iowa 51562 (712)489-2888

UNITED STATES PUBLIC LAND SURVEY CORNER CERTIFICATE

SECTION 36 TOWNSHIP 82N RANGE 41W COUNTY CRAWFORD

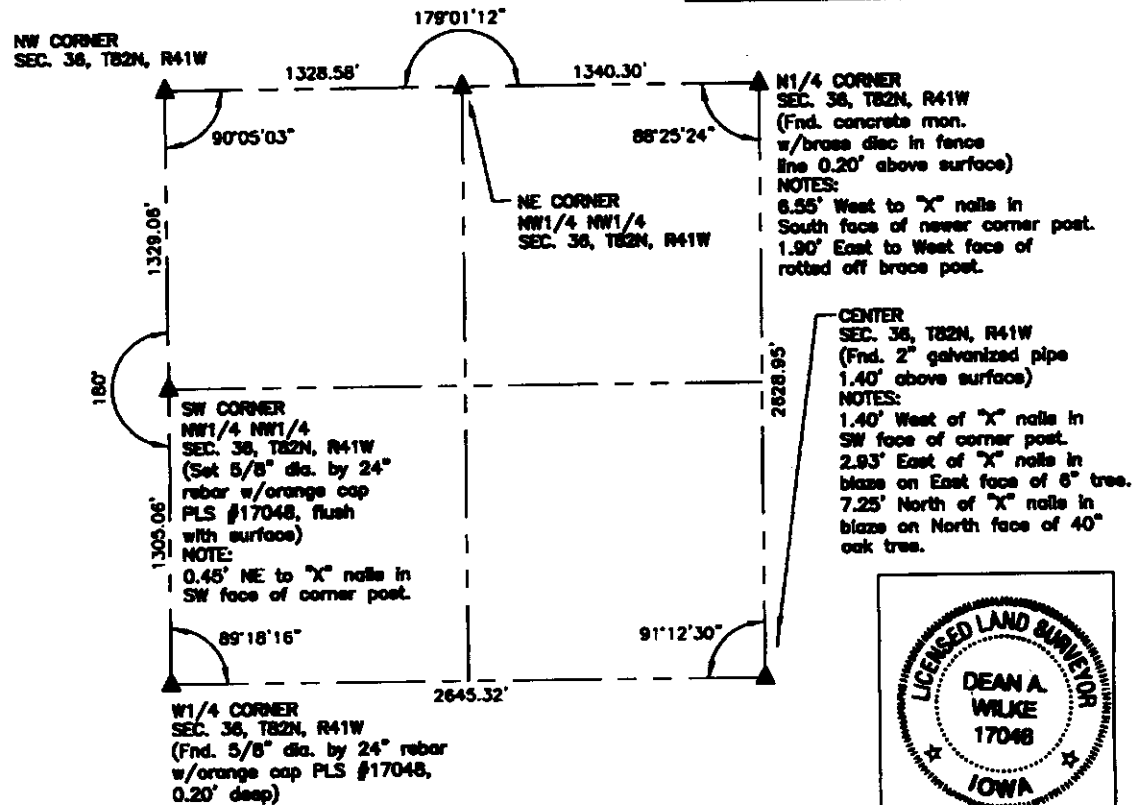
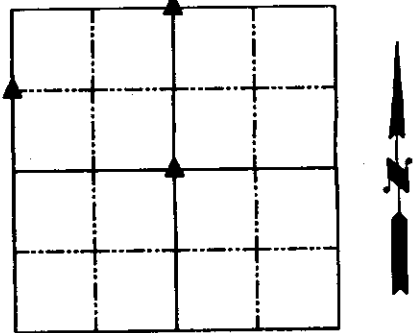
Monument Description and Remarks: Reason for Certificate: (No record Certificate)

N1/4 CORNER - Found concrete monument with brass disc in East/West fence line exposed 0.20' above the surface. Corner is 6.55' East of "X" nails in South face of newer corner post, and 1.90' West of the West face of a rotted off brace post.

CENTER - Found 2" galvanized pipe exposed 1.40' above the ground surface. Corner is 1.40' West of "X" Nails in Southwest face of corner post with fences running North and East. The exposed pipe was leaning slightly to the East, and the top/center of the pipe was used for this survey.

SW CORNER NW1/4 NW1/4 - Set 5/8" dia. by 24" rebar with orange cap PLS #17048 flush with the surface. Corner is 0.45' Southwest of "X" nails in the Southwest face of the corner post with fences running North and East.

SECTION 36



List Corners to be Indexed			
Corner	Section	Twp.	Range
N1/4 CORNER	36	82N	41W
SW CORNER NW1/4 NW1/4	36	82N	41W
CENTER	36	82N	41W

I hereby certify that this land surveying document was prepared and the related survey work was performed by me or under my direct personal supervision and that I am a duly Licensed Land Surveyor under the laws of the State of Iowa.

Dean A. Wilke 4/03/13
 Dean A. Wilke DLS

License number 17048
 My license renewal date is December 31, 2013
 Pages or sheets covered by this seal: This page only