

6-5 Found old oak stake 2"x2"x12"
3 1/2' deep. Lowered and set CM.

ties from x-spts in cor posts

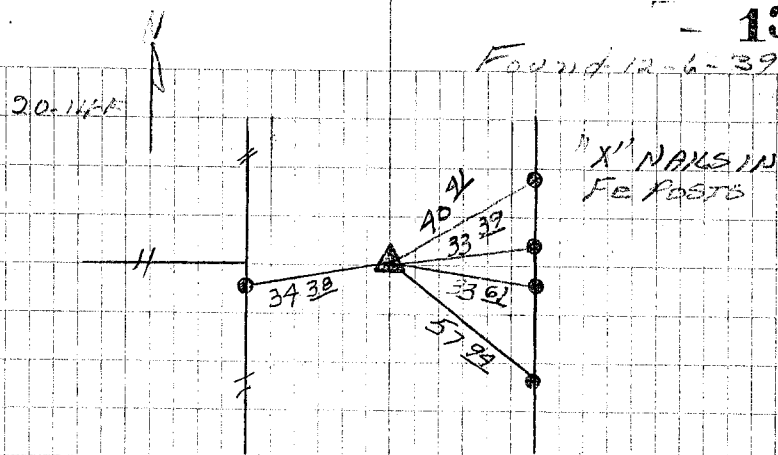
18.3 E from cor post

22.6 W " " " " " offline

26.5 NE " 2nd Fence Post South

31
6 12-6-39-Dug-5'x6'x9' hole in
line of N+S fences No find

Found 12-6-39



12-22-05

DEPTH

DUG 4'x6'x9' HOLE FOUND CM

found

SET 5" x 14" REBAR 0.6' DEEP

Oct. 16, 1962

OVER CM ROSS WOOD

Carey, Richards

20-19-5