

2004 JAN 26 AM 10:31

INST. NO. 2004-0218  
DENISE MEEVES, RECORDER  
*Denise Meeves*  
FEE # 11.00



This document prepared by : Semke & Associates - 712-792-2276  
Micheal G. Semke, L.S. #10318 - 716 N. Crawford St. - Carroll, Iowa

UNITED STATES PUBLIC LAND SURVEY CORNER CERTIFICATE  
OF

Land Survey Monuments situated in Section 10, Township 84 North, Range 41  
West, of the Fifth Principal Meridian, Crawford County, Iowa.  
Previously recorded in Book \_\_\_\_\_, Page \_\_\_\_\_ in County Recorder's Office.

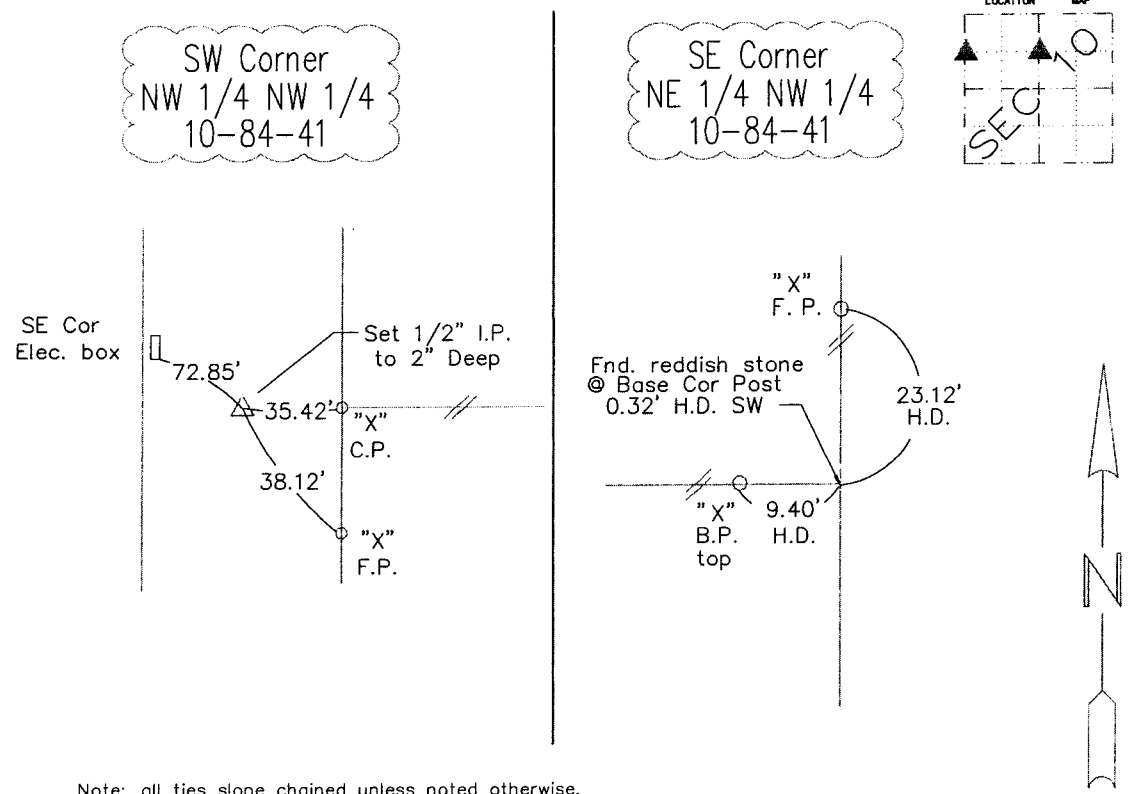
(Show reason for preparing this certificate, the evidence and detailed procedures used in establishing the corner positions and monumentation found or placed.)

SW Corner NW 1/4 NW 1/4	Set 1/2" x 24" I.P. on line & Equidistant from known Corners N.-S.
SE Corner NE 1/4 NW 1/4	Found Stone @ Base of Corner Post (N. side) 18" deep. Raised w/ 1/2" I.P. w/ cap.

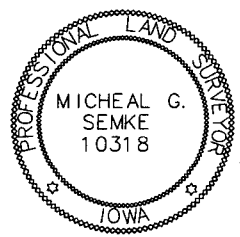
Note: All pins set are 1/2" x 24" Rerod w/Yellow Cap #10318 unless noted otherwise.

PLAN - VIEW

(Show a minimum of three reference ties to durable physical objects, relevant monuments and physical conditions that will enable recovery of the corner.)



Note: all ties slope chained unless noted otherwise.



I HEREBY CERTIFY THAT THIS CORNER CERTIFICATE WAS PREPARED BY ME OR UNDER MY PERSONAL SUPERVISION AND THAT I AM A PROFESSIONAL LAND SURVEYOR UNDER THE LAWS OF THE STATE OF IOWA. MY REGISTRATION IS SUBJECT TO RENEWAL ON 12-31-05.

*Micheal G. Semke* 12/29/05  
Signature Date

Micheal G. Semke, L.S. No. 10318  
Printed of Typed Name

List Corners to be Indexed			
Corners	Section	Twp	Range
SW Cor. NW 1/4 NW 1/4	10	84	41
SE Cor. NE 1/4 NW 1/4	10	84	41

Pages of sheets covered by this seal THIS PAGE My license is subject to renewal 12/31/05.