

INDEXED SM/SM  
 FOLLOW UP KM  
 PROOFED SM  
 SCANNED KM

Instrument #: 2016-1570  
 07/28/2016 11:11:06 AM Total Pages: 1  
 PLC PLAT CORNER CER  
 Recording Fee: \$0.00 Transfer Tax: \$0  
 Denise Meeves, Recorder, Crawford County Iowa



PREPARED BY: PAUL ASSMAN-CRAWFORD COUNTY ENGINEER'S OFFICE-COURTHOUSE-DENISON, IA.-712-263-2449

## UNITED STATES PUBLIC LAND SURVEY CORNER CERTIFICATE OF

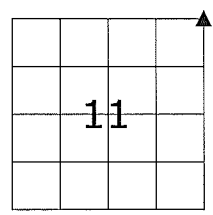
LAND SURVEY MONUMENT SITUATED IN CHARTER OAK TOWNSHIP, THE NORTHEAST CORNER OF SECTION 11,  
T-84N, R-41W OF THE FIFTH P.M. CRAWFORD COUNTY, IOWA.

PREVIOUSLY RECORDED AS NO. 97-2684

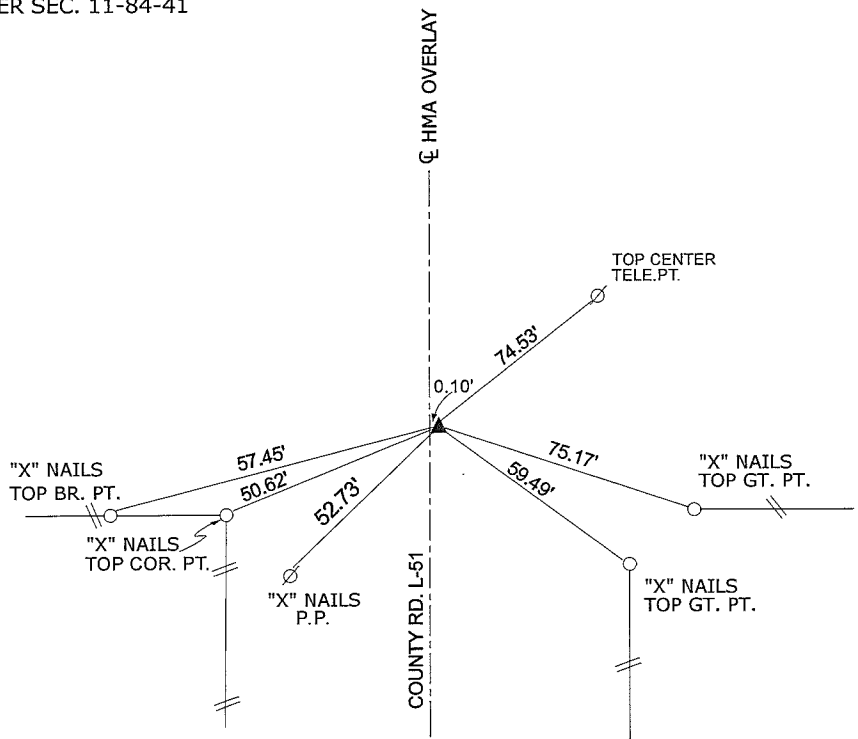
### MONUMENT DESCRIPTION AND REMARKS

NORTHEAST CORNER SEC. 11-84-41

FOUND BOLT FLUSH WITH ASPHALT USING PREVIOUS TIES. COMPLETED HMA OVERLAY, RESET AND RETIED CORNER - SET CARRIAGE BOLT 0.05' DEEP



NORTHEAST CORNER SEC. 11-84-41



ALL DISTANCES ARE PLUMB CHAINED

**CERTIFICATION:**

I HEREBY CERTIFY THAT THIS LAND SURVEYING DOCUMENT WAS PREPARED AND THE RELATED SURVEY WORK WAS PERFORMED BY ME OR UNDER MY DIRECT PERSONAL SUPERVISION AND THAT I AM A DULY LICENSED LAND SURVEYOR UNDER THE LAWS OF THE STATE OF IOWA.

Paul J. Assman Signature 7/27/16 Date of Survey

PAUL J. ASSMAN 11982 12-31-16  
 Typed Name L.S. No. License Renewal Date

Pages covered by this seal 1

