

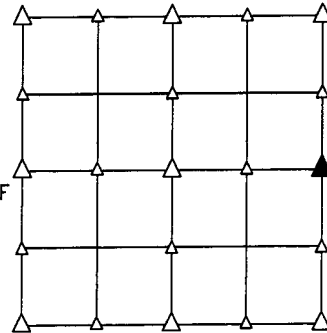
PREPARED BY - TERENCE E. CRAWFORD - SUNDQUIST ENGINEERING - 120 S. MAIN, DENISON, IOWA 51442 - PHONE (712) 263-8118

UNITED STATES PUBLIC LAND SURVEY CORNER CERTIFICATE OF

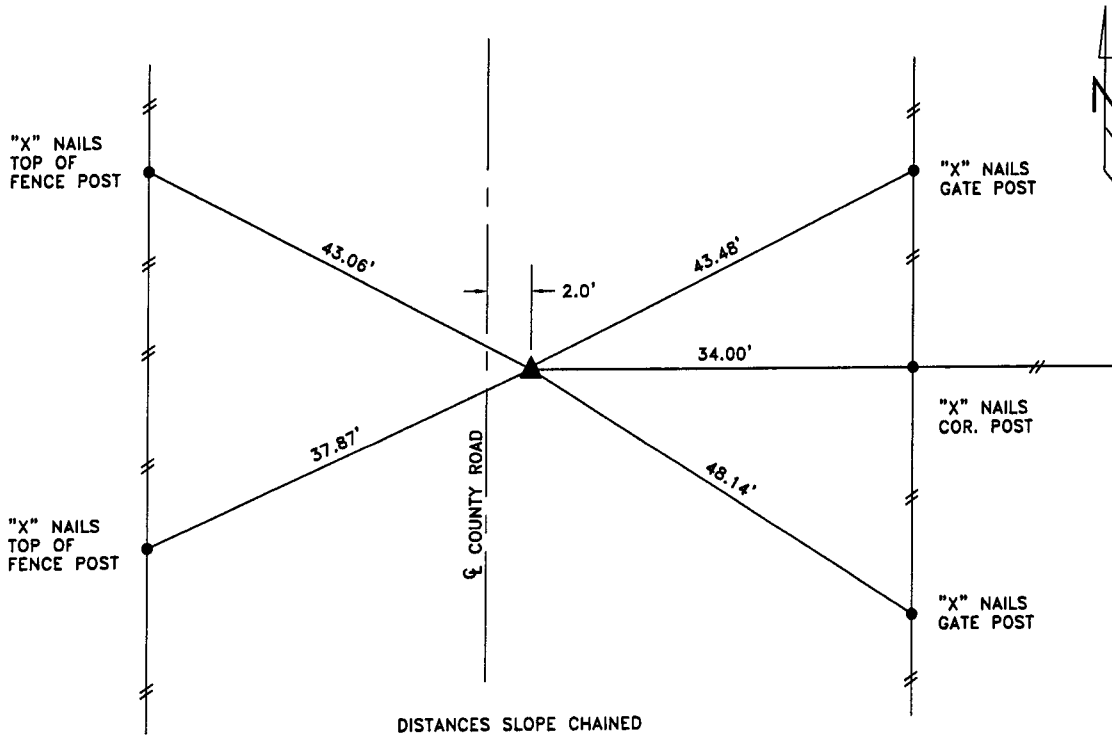
LAND SURVEY MONUMENT SITUATED IN SECTION 17, T 84 N, R 41 W OF
 THE 5TH P.M., CRAWFORD COUNTY, IOWA.
 PREVIOUSLY RECORDED IN BOOK _____, PAGE _____, OTHER _____

MONUMENT DESCRIPTION AND REMARKS

E1/4 CORNER - SET 5/8" DIA. X 18" IRON PIN W/YELLOW CAP
 #8893 0.4' DEEP, RESET FROM OLD COUNTY TIES.
 CORNER WAS FOUND IN 1955 BY COUNTY, IN 1956
 THE ROAD WAS GRADED AND CUT 3' AT THIS
 CORNER, MONUMENT WAS 14" DEEP. NO EVIDENCE OF
 CORNER.



PLAN VIEW SHOWING RELATIVE LOCATION OF MONUMENT AND REFERENCE POINTS.



DISTANCES SLOPE CHAINED

E1/4 CORNER SECTION 17-84-41

I HEREBY CERTIFY THAT THIS LAND SURVEYING DOCUMENT WAS PREPARED
 AND THE RELATED SURVEY WORK WAS PERFORMED BY ME OR UNDER MY
 DIRECT PERSONAL SUPERVISION AND THAT I AM A DULY LICENSED LAND
 SURVEYOR UNDER THE LAWS OF THE STATE OF IOWA.

Terence E. Crawford

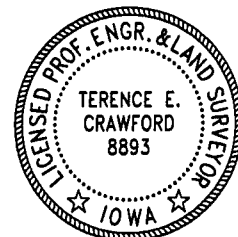
 TERENCE E. CRAWFORD

IA LICENSE NO. 8893

DEC 28 2005

DATE

EXP. DATE DECEMBER 31, 2007



SE PROJECT NO. 20106
 DRAWN BY: LLL