



REC'D  
FILED  
NOV 4 2006  
DENISON

PREPARED BY - TERENCE E. CRAWFORD - SUNDQUIST ENGINEERING - 120 S. MAIN, DENISON, IOWA 51442 - PHONE (712) 263-8118

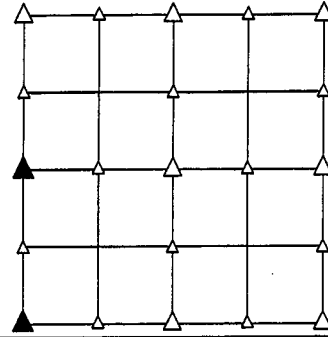
### UNITED STATES PUBLIC LAND SURVEY CORNER CERTIFICATE OF

LAND SURVEY MONUMENT SITUATED IN SECTION 17, T 84 N, R 41 W OF  
THE 5TH P.M., CRAWFORD COUNTY, IOWA.  
PREVIOUSLY RECORDED IN BOOK \_\_\_\_\_, PAGE \_\_\_\_\_, OTHER \_\_\_\_\_

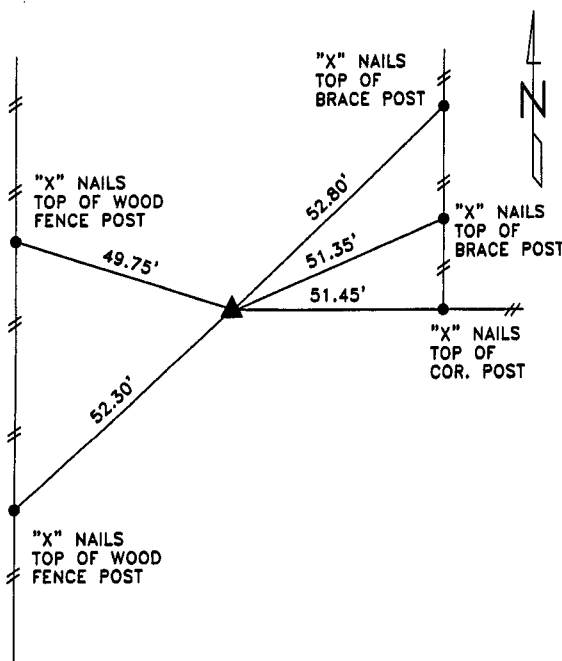
#### MONUMENT DESCRIPTION AND REMARKS

W1/4 CORNER - FOUND 1" BOLT 1.0' DEEP.

SW CORNER - FOUND 1/2" DIA. IRON PIN 1.0' DEEP.

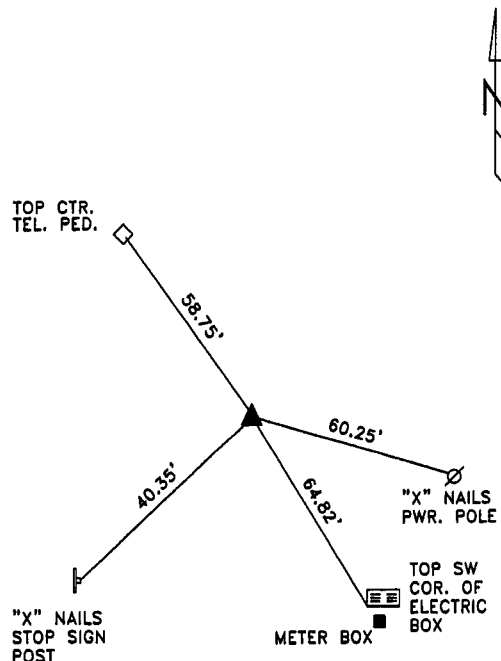


#### PLAN VIEW SHOWING RELATIVE LOCATION OF MONUMENT AND REFERENCE POINTS.



DISTANCES SLOPE CHAINED

W1/4 CORNER SECTION 17-84-41



DISTANCES SLOPE CHAINED

SW CORNER SECTION 17-84-41

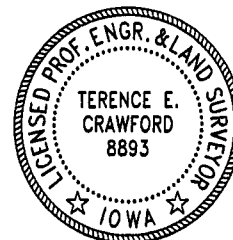
I HEREBY CERTIFY THAT THIS LAND SURVEYING DOCUMENT WAS PREPARED AND THE RELATED SURVEY WORK WAS PERFORMED BY ME OR UNDER MY DIRECT PERSONAL SUPERVISION AND THAT I AM A DULY LICENSED LAND SURVEYOR UNDER THE LAWS OF THE STATE OF IOWA.

*Terence E. Crawford*

TERENCE E. CRAWFORD  
IA LICENSE NO. 8893

DEC 28 2005

DATE  
EXP. DATE DECEMBER 31, 2007



SE PROJECT NO. 20106  
DRAWN BY: LLL