



REC'D
FILED
NOV 4 2006
DENISON

PREPARED BY - TERENCE E. CRAWFORD - SUNDQUIST ENGINEERING - 120 S. MAIN, DENISON, IOWA 51442 - PHONE (712) 263-8118

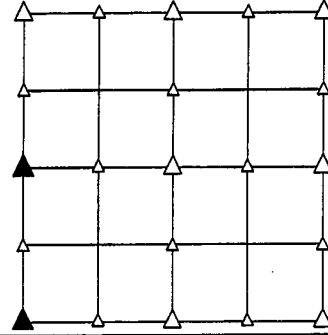
UNITED STATES PUBLIC LAND SURVEY CORNER CERTIFICATE OF

LAND SURVEY MONUMENT SITUATED IN SECTION 17, T 84 N, R 41 W OF
THE 5TH P.M., CRAWFORD COUNTY, IOWA.
PREVIOUSLY RECORDED IN BOOK _____, PAGE _____, OTHER _____

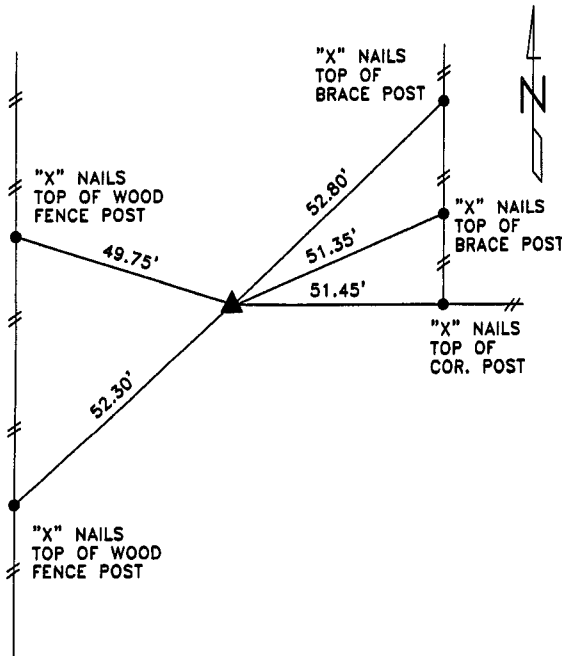
MONUMENT DESCRIPTION AND REMARKS

W1/4 CORNER - FOUND 1" BOLT 1.0' DEEP.

SW CORNER - FOUND 1/2" DIA. IRON PIN 1.0' DEEP.

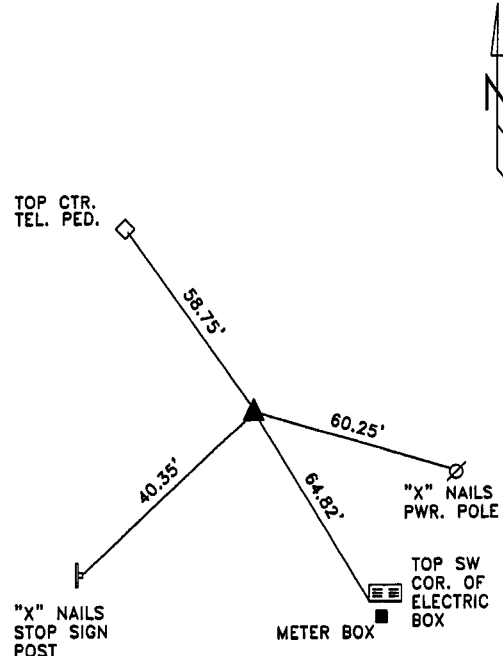


PLAN VIEW SHOWING RELATIVE LOCATION OF MONUMENT AND REFERENCE POINTS.



DISTANCES SLOPE CHAINED

W1/4 CORNER SECTION 17-84-41



DISTANCES SLOPE CHAINED

SW CORNER SECTION 17-84-41

I HEREBY CERTIFY THAT THIS LAND SURVEYING DOCUMENT WAS PREPARED AND THE RELATED SURVEY WORK WAS PERFORMED BY ME OR UNDER MY DIRECT PERSONAL SUPERVISION AND THAT I AM A DULY LICENSED LAND SURVEYOR UNDER THE LAWS OF THE STATE OF IOWA.

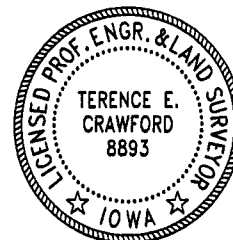
Terence E. Crawford
TERENCE E. CRAWFORD

IA LICENSE NO. 8893

DEC 28 2005

DATE

EXP. DATE DECEMBER 31, 2007



SE PROJECT NO. 20106
DRAWN BY: LLL