

2003 AUG -5 PM 3:52

2003-3020

JENISE DEVELS RECORDER

Denise Devels

FFE #112

MaryCaten Deputy

DM  
PLANNED  
REVISIONS  
DATE

PREPARED BY - TERENCE E. CRAWFORD - SUNDQUIST ENGINEERING - 120 S. MAIN, DENISON, IOWA 51442 - PHONE (712) 263-8118

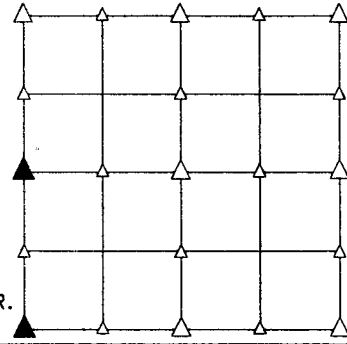
# UNITED STATES PUBLIC LAND SURVEY CORNER CERTIFICATE OF

LAND SURVEY MONUMENT SITUATED IN SECTION 6, T 84 N, R 40 W OF  
THE 5TH P.M., CRAWFORD COUNTY, IOWA.  
PREVIOUSLY RECORDED IN BOOK \_\_\_\_\_, PAGE \_\_\_\_\_, OTHER \_\_\_\_\_

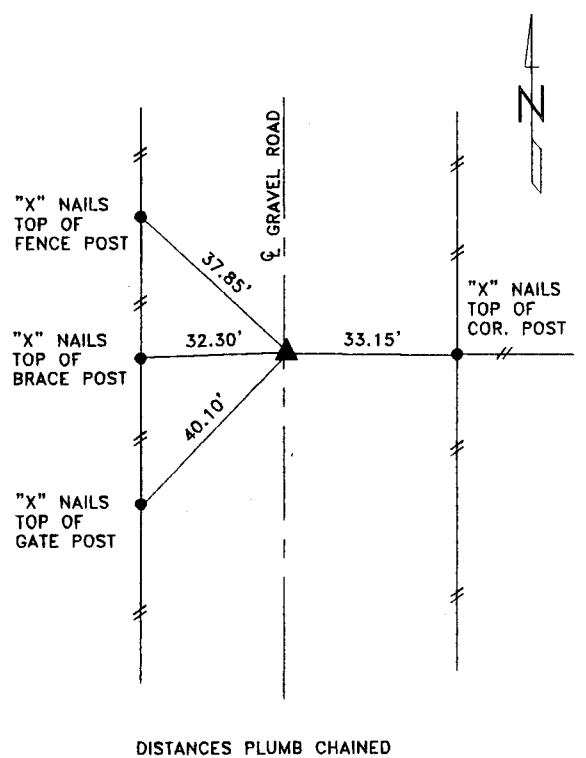
## MONUMENT DESCRIPTION AND REMARKS

W1/4 CORNER - FOUND CM 1.8' DEEP, SET 5/8" DIA. X 30" IRON PIN ON NO. SIDE OF CM FLUSH W/TOP, SET 5/8" DIA. X 18" IRON PIN ON TOP OF CM, ALSO SET 5/8" DIA. X 12" IRON PIN W/YELLOW CAP #8893.

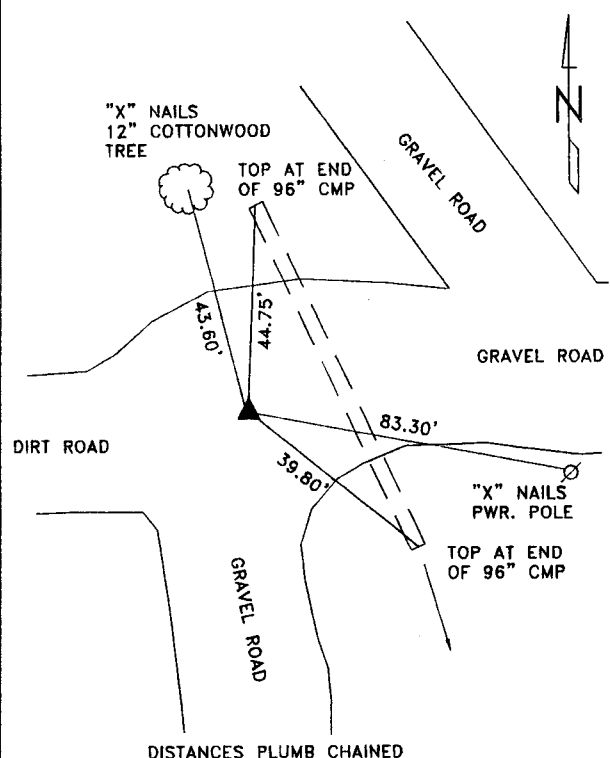
SW CORNER - SET 5/8" DIA. X 18" IRON PIN W/YELLOW CAP #8893 0.3' DEEP, EXTENDED LINE SOUTH FROM NORTH BETWEEN NW COR. & W1/4 COR. OF SEC. 6 & DISTANCE FROM FENCE LINE AT S1/4 COR. TO SW COR. CHECKED WITH RECORD DISTANCE.



## PLAN VIEW SHOWING RELATIVE LOCATION OF MONUMENT AND REFERENCE POINTS.

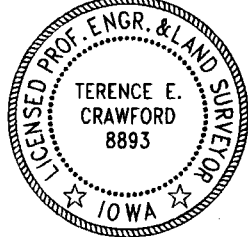


W1/4 CORNER SECTION 6-84-40



SW CORNER SECTION 6-84-40

I HEREBY CERTIFY THAT THIS LAND SURVEYING DOCUMENT WAS PREPARED AND THE RELATED SURVEY WORK WAS PERFORMED BY ME OR UNDER MY DIRECT SUPERVISION AND THAT I AM A DULY LICENSED LAND SURVEYOR UNDER THE LAWS OF THE STATE OF IOWA.



*Terence E. Crawford*  
TERENCE E. CRAWFORD  
IA LICENSE NO. 8893

AUG 01 2003  
DATE  
EXP. DATE DECEMBER 31, 2003

SE PROJECT NO. 24103  
DRAWN BY: LLL