

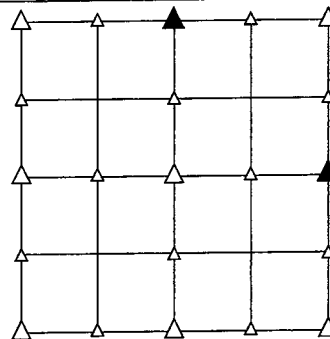
PREPARED BY - TERENCE E. CRAWFORD - SUNDQUIST ENGINEERING - 120 S. MAIN, DENISON, IOWA 51442 - PHONE (712) 263-8118

## UNITED STATES PUBLIC LAND SURVEY CORNER CERTIFICATE OF

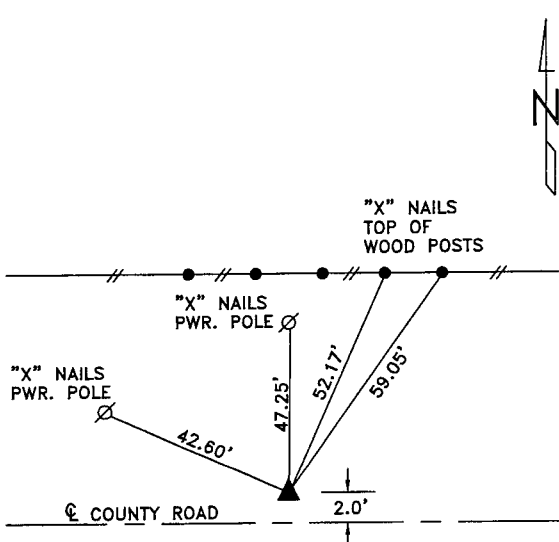
LAND SURVEY MONUMENT SITUATED IN SECTION 22, T 84 N, R 41 W OF  
 THE 5TH P.M., CRAWFORD COUNTY, IOWA.  
 PREVIOUSLY RECORDED IN BOOK \_\_\_\_\_, PAGE \_\_\_\_\_, OTHER \_\_\_\_\_

### MONUMENT DESCRIPTION AND REMARKS

N1/4 CORNER - FOUND 5/8" DIA. IRON PIN 0.60' DEEP.  
 E1/4 CORNER - FOUND 5/8" DIA. IRON PIN 0.50' DEEP.

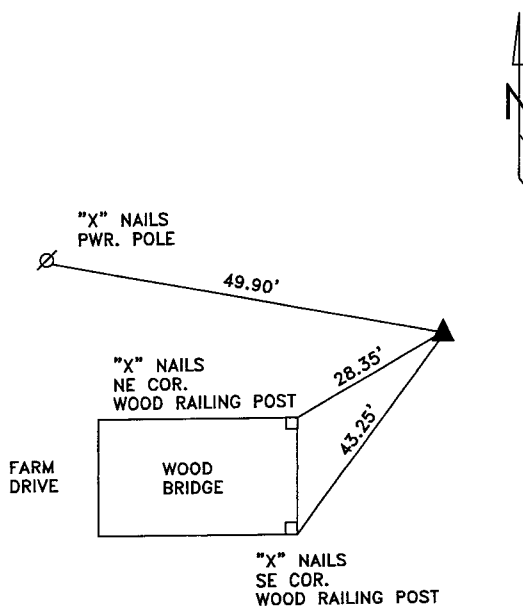


### PLAN VIEW SHOWING RELATIVE LOCATION OF MONUMENT AND REFERENCE POINTS.



DISTANCES SLOPE CHAINED

N1/4 CORNER SECTION 22-84-41

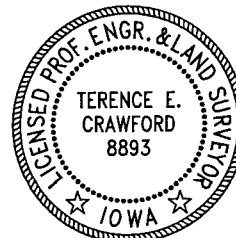


DISTANCES SLOPE CHAINED

E1/4 CORNER SECTION 22-84-41

I HEREBY CERTIFY THAT THIS LAND SURVEYING DOCUMENT WAS PREPARED AND THE RELATED SURVEY WORK WAS PERFORMED BY ME OR UNDER MY DIRECT SUPERVISION AND THAT I AM A DULY LICENSED LAND SURVEYOR UNDER THE LAWS OF THE STATE OF IOWA.

*Terence E. Crawford* APR 01 2004  
 TERENCE E. CRAWFORD DATE  
 IA LICENSE NO. 8893 EXP. DATE DECEMBER 31, 2005



SE PROJECT NO. 20904  
 DRAWN BY: LLL