



UNITED STATES PUBLIC LAND SURVEY CORNER CERTIFICATE OF



Land Survey Monuments Situated in Section 23, Township 84N, Range 41W, Of The Fifth Principal Meridian, Crawford County, Iowa.

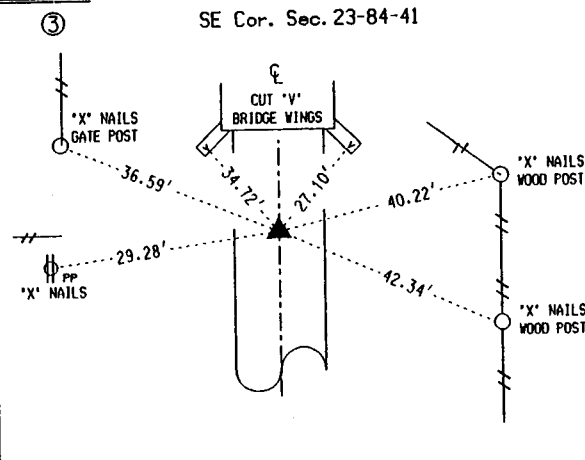
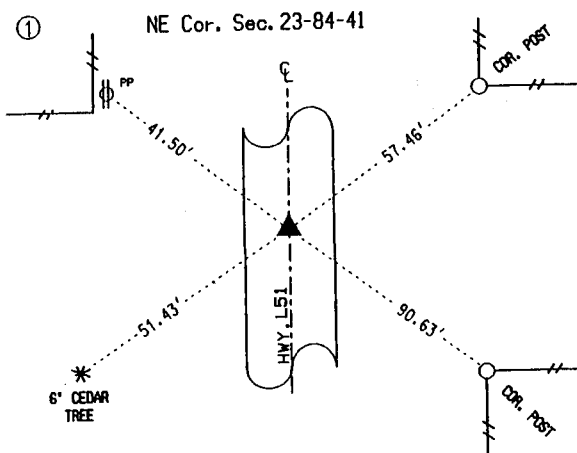
INDEXED 10/11/95  
FOLLOW UP 1/16/96  
PROOFED  
FILED DENISON, IOWA  
CRAWFORD COUNTY

Monument Description and Remarks:

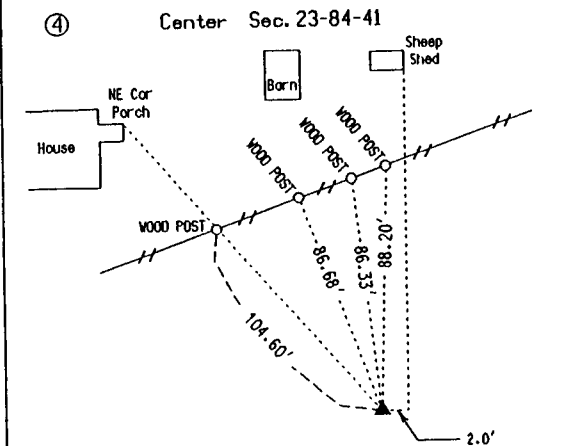
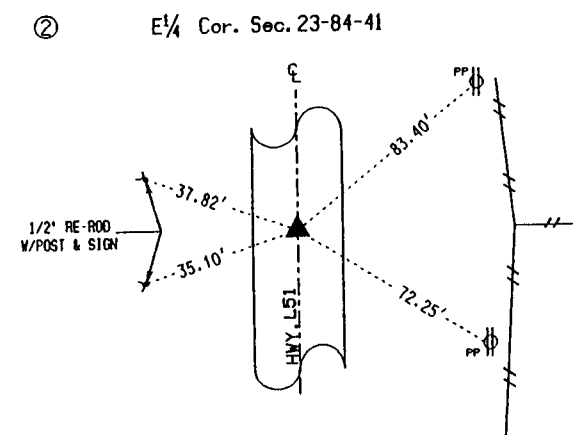
95 MAY 19 AM 9:42

- ① NE Cor. Sec. 23-84-41, Found Lead Plug in centerline of County Road Concrete Paving. *95-1269*
- ② E<sup>1</sup>/<sub>4</sub> Cor. Sec. 23-84-41, Found 3/8" Re-Rod in centerline of County Road Concrete Paving. *Denise Heeves*
- ③ SE Cor. Sec. 23-84-41, Found 1 1/2" Re-Rod, 8 inches deep
- ④ Center Sec. 23-84-41, Set 4'x4'x42" Concrete Monument in line with S<sup>1</sup>/<sub>4</sub> Cor. of Sec. 23 and SW Cor. of NW<sup>1</sup>/<sub>4</sub>, SE<sup>1</sup>/<sub>4</sub> of Sec. 23 and on line between W<sup>1</sup>/<sub>4</sub> Cor. and E<sup>1</sup>/<sub>4</sub> Cor. of Sec. 23. Monument is 15 inches deep and has a magnet and iron Re-Rod by it.

PLAN - VIEW



ALL TIES TO 'X' NAILS UNLESS OTHERWISE NOTED



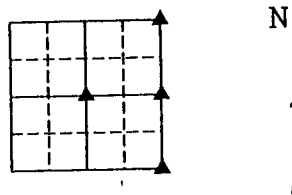
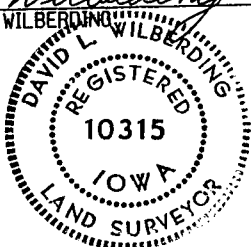
ALL TIES TO 'X' NAILS UNLESS OTHERWISE NOTED

I hereby certify that the survey work was completed and this land surveying document was prepared by me or under my direct personal supervision and that I am a duly registered Land Surveyor under the laws of the state of Iowa.

Signature: *David L. Wilberding*  
DAVID L. WILBERDING

Reg. No. 10315

Date: *5-18-95*



List Corners to be Indexed

Corner	Section	Twp	Range
① NE Cor	23	84N	41W
② E <sup>1</sup> / <sub>4</sub> Cor	23	84N	41W
③ SE Cor	23	84N	41W
④ Center	23	84N	41W

My Registration Renewal Date is December 31, 1995