

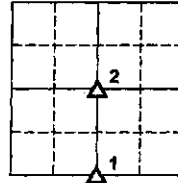
INDEXED NAME
 FOLLOW UP _____
 PROOFED _____
 SURETY _____

PREPARED BY AND RETURN TO: JEFFREY M. KRUEGER P.L.S., KUEHL AND PAYER LTD., 2002 WEST MAIN ST., SAC CITY, IA 50583 PH. (712)662-7869

SECTION 27

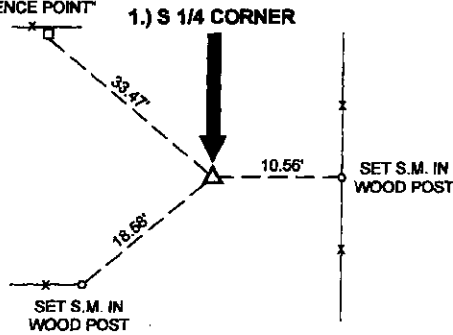
UNITED STATES PUBLIC LAND SURVEY CORNER CERTIFICATE
OF

LAND SURVEY MONUMENTS SITUATED IN SECTION 27,
 TOWNSHIP 84 NORTH, RANGE 41 WEST
 OF THE 5TH P.M., CRAWFORD COUNTY, IOWA.



Not to Scale

SET 5/8" REBAR WITH PINK
 PLASTIC CAP STAMPED
 "SECTION CORNER
 REFERENCE POINT"



1.) S 1/4 CORNER 27-84-41 CRAWFORD COUNTY, IOWA:

FOUND CONCRETE MONUMENT WITH TOP BROKEN OFF AT SURFACE OF GROUND. SET 3/4" BAR ON SOUTH SIDE TO AID IN LOCATION.

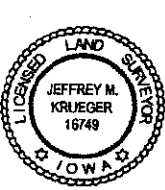
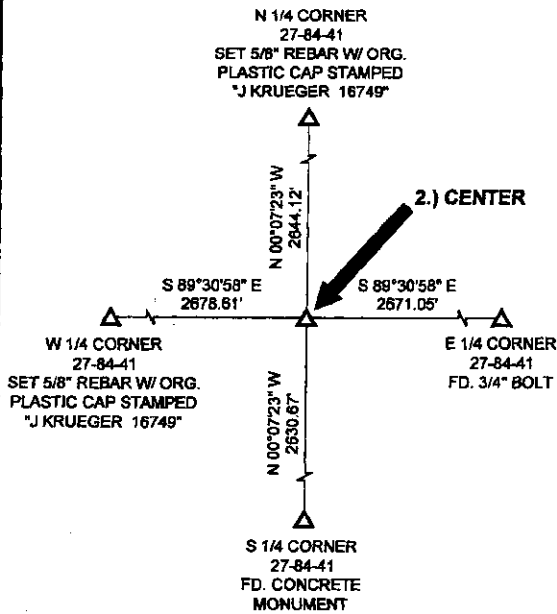
THIS MONUMENT MATCHES WITHIN REASON THE MONUMENTATION SHOWN ON EXISTING CRAWFORD COUNTY ENGINEER'S OFFICE REFERENCE TIES.

THIS CERTIFICATE IS BEING PREPARED BECAUSE: THERE IS NO CERTIFICATE FOR THE CORNER ON FILE WITH THE RECORDER OF THE COUNTY IN WHICH THE CORNER IS LOCATED.

2.) CENTER OF SECTION 27-84-41 CRAWFORD COUNTY, IOWA:

NO RECORD OF CORNER. SEARCHED AND FOUND NOTHING. SET 5/8" REBAR WITH ORANGE PLASTIC CAP STAMPED "J KRUEGER 16749", FLUSH WITH GROUND, AT THEORETICAL POSITION PER B.L.M. METHODS.

THIS CERTIFICATE IS BEING PREPARED BECAUSE: THERE IS NO CERTIFICATE FOR THE CORNER ON FILE WITH THE RECORDER OF THE COUNTY IN WHICH THE CORNER IS LOCATED.



I hereby certify that this land surveying document was prepared and the related survey work was performed by me or under my direct personal supervision and that I am a duly licensed Land Surveyor under the laws of the State of Iowa.

Jeffrey M. Krueger
 Jeffrey M. Krueger
 License Number 16749
 My license renewal date is December 31, 2008
 Pages covered by this seal 1
 Date: 5-2-2008

List Corners to be Indexed

| Corners | Section | Township | Range |
|-----------|---------|----------|-------|
| 1) S 1/4 | 27 | 84 | 41 |
| 2) CENTER | 27 | 84 | 41 |

PN: 080507
 DRAWN: JMK