

INDEXED SM/SM  
 FOLLOW UP SM  
 PROOFED SM  
 SCANNED SM

Instrument #: 2015-2213  
 10/22/2015 11:21:10 AM Total Pages: 1  
 PLC PLAT CORNER CER  
 Recording Fee: \$0.00 Transfer Tax: \$0  
 Denise Neeves, Recorder, Crawford County Iowa



PREPARED BY: PAUL ASSMAN-CRAWFORD COUNTY ENGINEER'S OFFICE-COURTHOUSE-DENISON, IA.-712-263-2449

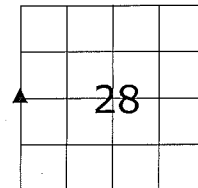
## UNITED STATES PUBLIC LAND SURVEY CORNER CERTIFICATE OF

LAND SURVEY MONUMENT SITUATED IN CHARTER OAK TOWNSHIP, THE WEST 1/4 CORNER OF SECTION 28,  
T-84N, R-41W OF THE FIFTH P.M. CRAWFORD COUNTY, IOWA.

PREVIOUSLY RECORDED AS NO. 99-0464

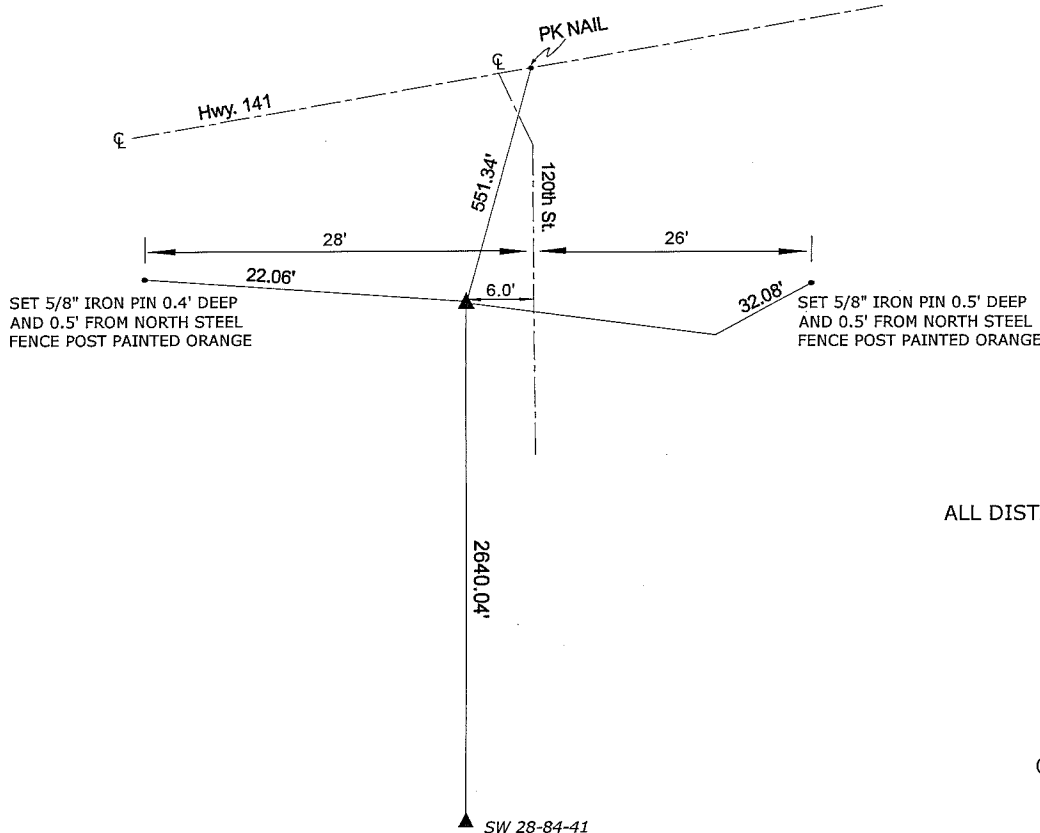
### MONUMENT DESCRIPTION AND REMARKS

WEST 1/4 CORNER SEC. 28-84-41



FOUND AXLE 0.80' DEEP ON NORTH SIDE OF BROKEN  
 CONCRETE MONUMENT 1.0' DEEP WITH 1/4" IRON PIN IN  
 MIDDLE OF CONCRETE MONUMENT.

WEST 1/4 CORNER SEC. 28-84-41



ALL DISTANCES ARE PLUMB CHAINED

COORDINATES:

**CERTIFICATION:**

I HEREBY CERTIFY THAT THIS LAND SURVEYING DOCUMENT WAS PREPARED AND THE RELATED SURVEY WORK WAS PERFORMED BY ME OR UNDER MY DIRECT PERSONAL SUPERVISION AND THAT I AM A DULY LICENSED LAND SURVEYOR UNDER THE LAWS OF THE STATE OF IOWA.

Paul J. Assman Signature 12/11/14 Date of Survey

PAUL J. ASSMAN Typed Name 11982 L.S. No. 12-31-16 License Renewal Date

