

INDEXED DM/DM
 FOLLOW UP km
 PROOFED km
 SCANNED km

Instrument #: 2016-1571
 07/28/2016 11:11:06 AM Total Pages: 1
 PLC PLAT CORNER CER
 Recording Fee: \$0.00 Transfer Tax: \$0
 Denise Meeves, Recorder, Crawford County Iowa



PREPARED BY: PAUL ASSMAN-CRAWFORD COUNTY ENGINEER'S OFFICE-COURTHOUSE-DENISON, IA.-712-263-2449

UNITED STATES PUBLIC LAND SURVEY CORNER CERTIFICATE OF

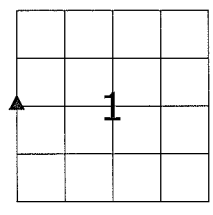
LAND SURVEY MONUMENT SITUATED IN CHARTER OAK TOWNSHIP, THE WEST 1/4 CORNER OF SECTION 1,
T-84N, R-41W OF THE FIFTH P.M. CRAWFORD COUNTY, IOWA.

PREVIOUSLY RECORDED AS NO. 2009-0007

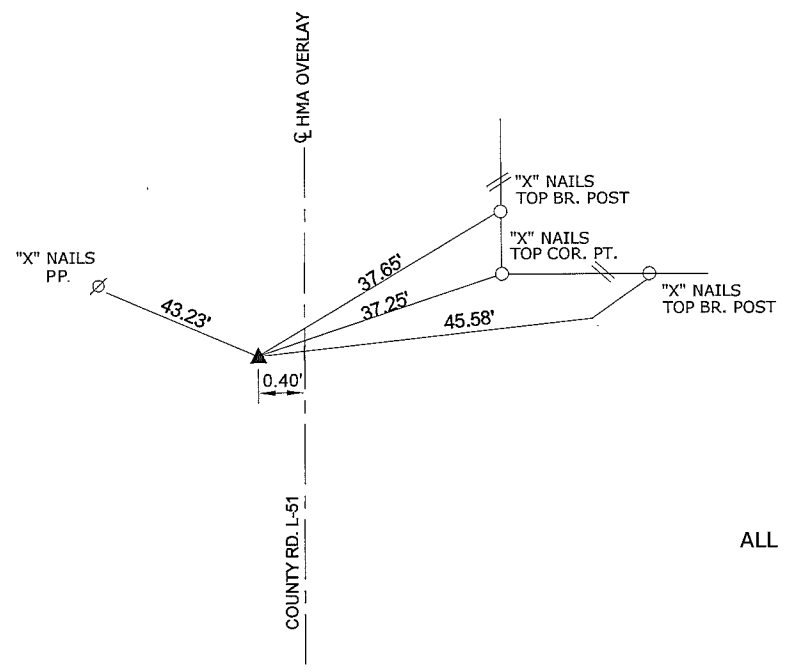
MONUMENT DESCRIPTION AND REMARKS

WEST 1/4 CORNER SEC. 1-84-41

FOUND PK NAIL USING PREVIOUS TIES. COMPLETED HMA OVERLAY, RESET AND RETIED CORNER - SET CARRIAGE BOLT 0.05' DEEP



WEST 1/4 CORNER SEC. 1-84-41



ALL DISTANCES ARE PLUMB CHAINED

CERTIFICATION:

I HEREBY CERTIFY THAT THIS LAND SURVEYING DOCUMENT WAS PREPARED AND THE RELATED SURVEY WORK WAS PERFORMED BY ME OR UNDER MY DIRECT PERSONAL SUPERVISION AND THAT I AM A DULY LICENSED LAND SURVEYOR UNDER THE LAWS OF THE STATE OF IOWA.

 Signature	<u>7/27/16</u> Date of Survey	
PAUL J. ASSMAN	11982	12-31-16
Typed Name	L.S. No.	License Renewal Date
Pages covered by this seal <u>1</u>		

