

2001 OCT 26 AM 10:36

INST. NO. 2001-3047
DENISE MEEVES, RECORDER

Denise Meeves
FEE \$16.00
Mary Sitten, Deputy

INDEXED
FOLLOW UP
FILED

WARDER C. HILLHOUSE, JR. MHF ENGINEERING P.C. 300 W. MCKINLEY JEFFERSON, IA. (515)386-4101

UNITED STATES PUBLIC LAND SURVEY CORNER CERTIFICATE OF

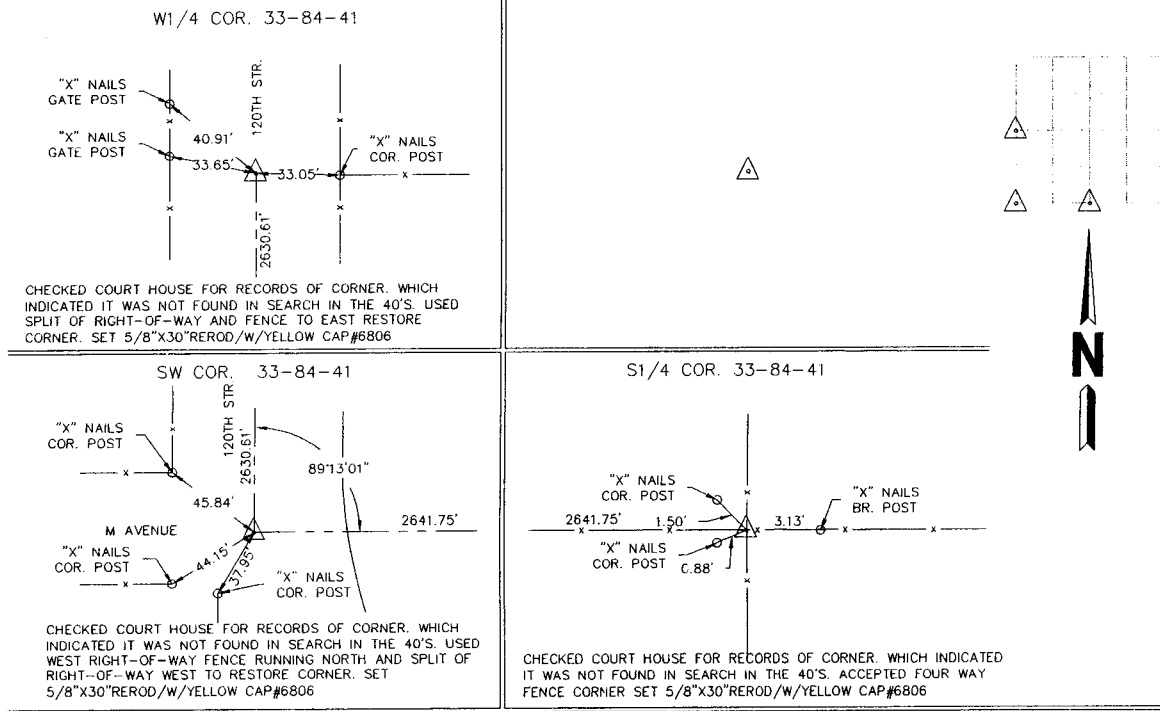
Land Survey Monuments in Section 33, Township 84, Range 41, of the Fifth Principal Meridian, CRAWFORD County, Iowa. Previously recorded in _____ in County Recorder's Office.

(Show reason for preparing this certificate, the evidence and detailed procedures used in establishing the corner positions and monumentation found or placed.)

Monument Description and Remarks: _____

PLAN - VIEW

(Show a minimum of three reference ties to durable physical objects, relevant monuments and physical conditions that will enable recovery of the corner.)



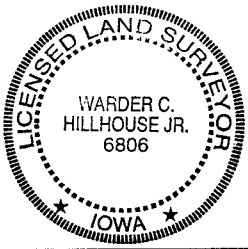
I hereby certify that land surveying document and the related survey work was performed by me or under my direct personal supervision and that I am a duly licensed land surveyor under the laws of the state of Iowa.

Signature: Warder C. Hillhouse, Jr.
Name typed or printed: Warder C. Hillhouse, Jr.

Date: 10/24/01 Lic. No. 6806

License Renewal Dec. 31, 2001
Date Surveyed: 10/01

Seal



List Corners to be Indexed

Corners	Section	Twp	Range
W1/4 COR.	33	84	41
SW COR.	33	84	41
S1/4 COR.	33	84	41

File No. 01194-1

M.H.F. ENGINEERING, P.C.
ENGINEERS - LAND SURVEYORS
Jefferson, Iowa 50129 Ph. (515)386-4101