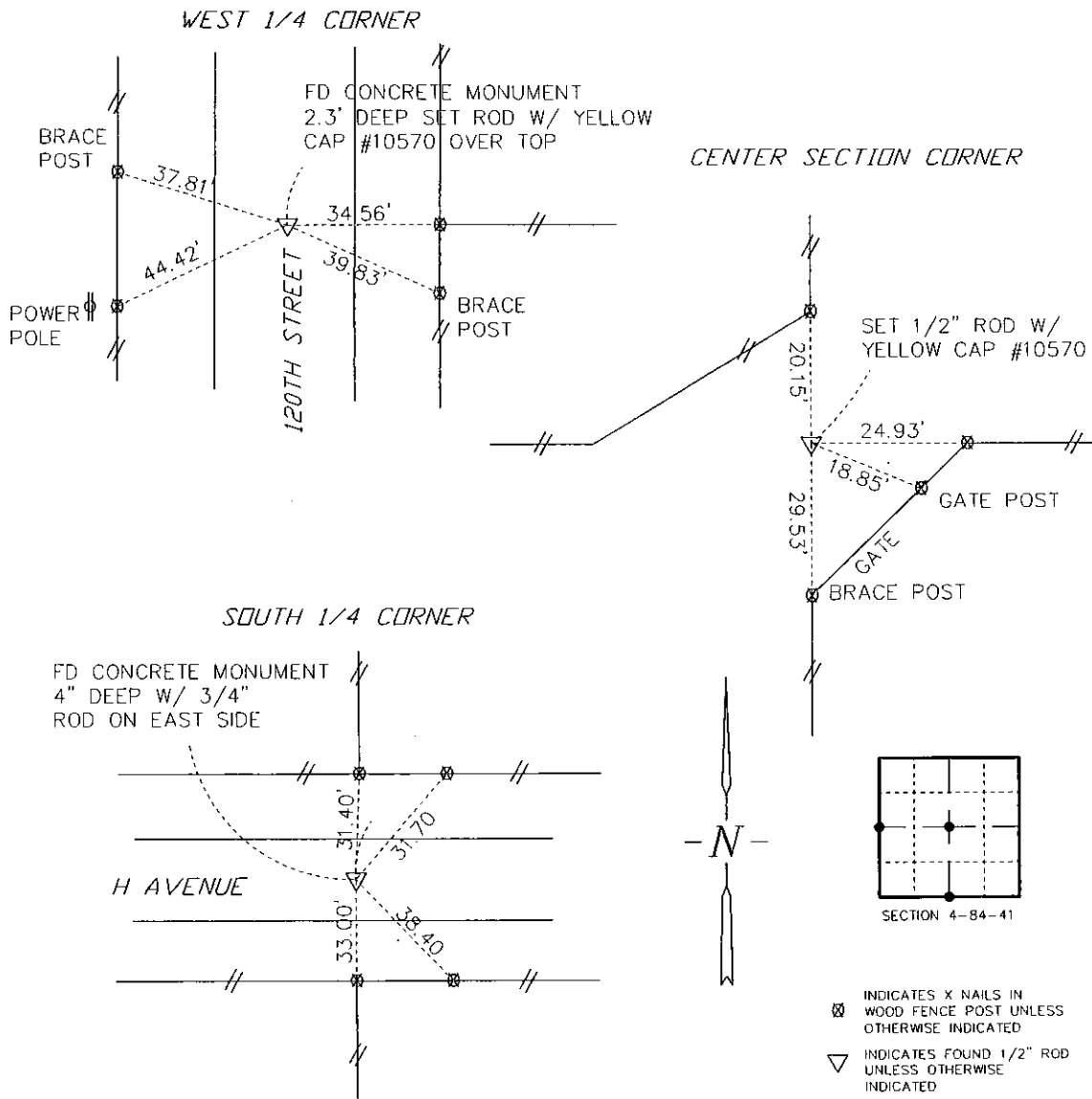


Crawford County Recorder  
 Denise Meeves  
**Fee Book 2010-0828**  
 04/27/2010 @ 11:34AM  
 PLC PLAT CORNER CER  
 Book: Page: # Pages: 1  
 Total Fees: \$9.00

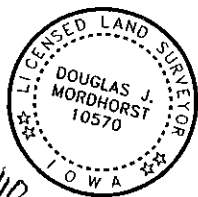
MLS & ASSOCIATES, P.L.C. 201 BENSON BLDG SIOUX CITY, IA (712)258-6844

UNITED STATES PUBLIC LAND SURVEY CORNER CERTIFICATE  
 SECTION 4, TOWNSHIP 84 NORTH, RANGE 41 WEST, 5TH P.M.



CERTIFICATION BLOCK

I HEREBY CERTIFY THAT THIS LAND SURVEYING DOCUMENT WAS PREPARED AND THE RELATED SURVEY WORK WAS PERFORMED BY ME OR UNDER MY DIRECT PERSONAL SUPERVISION AND THAT I AM A DULY LICENSED LAND SURVEYOR UNDER THE LAWS OF THE STATE OF IOWA.



*Douglas J. Mordhorst*  
 DOUGLAS J. MORDHORST DATE  
 LICENSE NUMBER 10570  
 MY LICENSE RENEWAL DATE IS DECEMBER 31, 2010  
 THIS SHEET COVERED BY THIS SEAL  
 PLOT DATE: APRIL 21, 2010

CORNERS TO BE INDEXED

(SECTION 4-84-41)

CORNERS	SECTION	TOWNSHIP	RANGE
WEST 1/4 CORNER	4	84	41
SOUTH 1/4 CORNER	4	84	41
CENTER SECTION CORNER	4	84	41