

INDEXED _____
 FOLLOW UP _____
 PROOFED _____
 SCANNED _____

Instrument #: 2015-1486
 07/15/2015 10:58:19 AM Total Pages: 1
 PLC PLAT CORNER CER
 Recording Fee: \$7.00 Transfer Tax: \$0
 Denise Meeves, Recorder, Crawford County Iowa



WILKE LAND SURVEYING INC. 401 1800th Street Panama, Iowa 51562 (712)489-2898

UNITED STATES PUBLIC LAND SURVEY CORNER CERTIFICATE

SECTION 5 TOWNSHIP 84N RANGE 41W COUNTY CRAWFORD

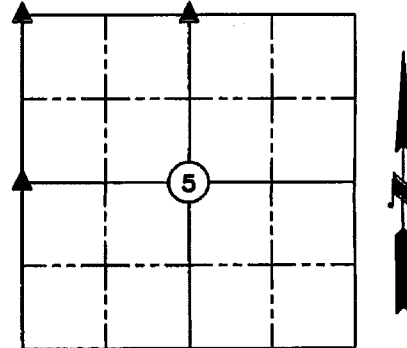
Reason for Certificate: Survey in FRL. NW1/4 NW1/4

Monument Description and Remarks:

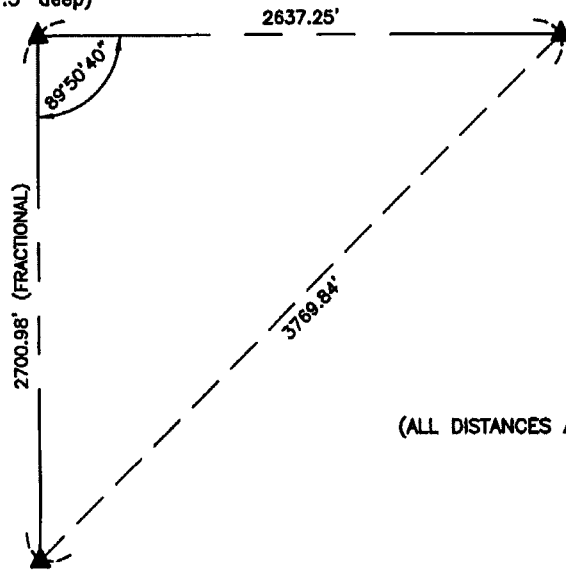
N1/4 CORNER - Found 5/8" diameter iron pin, 0.4' deep. No suitable ties available.

NW CORNER - Found 3/4" square headed bolt, 1.5' deep.

W1/4 CORNER - Found 1/2" diameter iron pin, 1.0' deep. Probed under iron pin and hit concrete monument 2.2' below road surface. No suitable ties available.



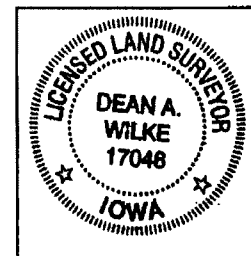
NW CORNER
 SEC. 5-T84N-R41W
 (Fnd. 3/4" square headed bolt, 1.5' deep)



N1/4 CORNER
 SEC. 5-T84N-R41W
 (Fnd. 5/8" dia. iron pin, 0.4' deep)

W1/4 CORNER
 SEC. 5-T84N-R41W
 (Fnd. 1/2" dia. iron pin, 1.0' deep. Probed under iron pin and hit conc. mon. 2.2' below road surface)

(ALL DISTANCES ARE HORIZONTAL)



I hereby certify that this land surveying document was prepared and the related survey work was performed by me or under my direct personal supervision and that I am a duly licensed Land Surveyor under the laws of the State of Iowa.

Dean A. Wilke 7/13/15
 Dean A. Wilke Date

License number 17048

My license renewal date is December 31, 2015

Pages or sheets covered by this seal: This page only

List Corners to be Indexed			
Corner	Section	Twp.	Range
N1/4 CORNER	5	84N	41W
NW CORNER	5	84N	41W
W1/4 CORNER	5	84N	41W