

INDEXED ✓
 FOLLOW UP _____
 PROOFED _____
 SCANNED _____

Instrument #: 2016-1273
 06/22/2016 09:28:39 AM Total Pages: 1
 PLC PLAT CORNER CER
 Recording Fee: \$7.00 Transfer Tax: \$0
 Denise Meeves, Recorder, Crawford County Iowa



WILKE LAND SURVEYING INC. 401 1800th Street Panama, Iowa 51562 (712)489-2898

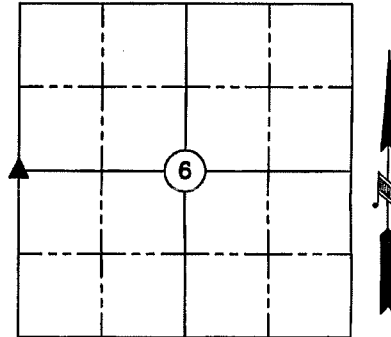
UNITED STATES PUBLIC LAND SURVEY CORNER CERTIFICATE

SECTION 6 TOWNSHIP 84N RANGE 41W COUNTY CRAWFORD

Reason for Certificate: Survey in the SW1/4 of Sec. 1-T84N-R42W

Monument Description and Remarks:

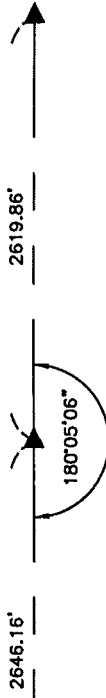
W1/4 CORNER - Found concrete monument with brass disc (2.9' deep) by probing. Placed 5/8" diameter rebar next to the monument for detection purposes only. Set 5/8" diameter by 24" long rebar with orange cap PLS #17048 above the monument (0.9' deep). The monument location fits well with the remnants of fences North, East, and West.



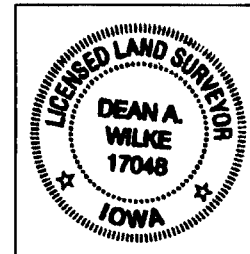
NW CORNER
 SEC. 6, T84N, R41W
 (Fnd. 1" square iron pin)

W1/4 CORNER
 SEC. 6, T84N, R41W
 (Fnd. conc. mon. w/brass disc,
 2.9' deep. Set 5/8" dia. by
 24" long rebar w/orange cap
 PLS #17048 above, 0.9' deep)

SW CORNER
 SEC. 6, T84N, R41W
 (Fnd. 1/2" dia. rebar)



IA RTN GEODETTIC COORDINATES
 DATUM - NAD 83 (2011)
 LATITUDE LONGITUDE
 42°07'02.28224"N 95°40'16.49381"W



(ALL DISTANCES ARE HORIZONTAL)

List Corners to be Indexed			
Corner	Section	Twp.	Range
W1/4 CORNER	6	84N	41W

I hereby certify that this land surveying document was prepared and the related survey work was performed by me or under my direct personal supervision and that I am a duly licensed Land Surveyor under the laws of the State of Iowa.

Dean A. Wilke 6/20/16
 Dean A. Wilke Date

License number 17048

My license renewal date is December 31, 2017

Pages or sheets covered by this seal: This page only