

1999 MY -6 PM 2:04

INST. NO. 99-1329
DENISE MEEVES, RECORDER
Denise Meeves
FEE \$ 6.00

INDEXED
FOLLOW UP
PROOFED

**UNITED STATES PUBLIC LAND SURVEY CORNER CERTIFICATE
OF**

LAND SURVEY MONUMENTS SITUATED IN SECTION 31, TOWNSHIP 85 NORTH, RANGE 41 WEST,
OF THE 5th PRINCIPAL MERIDIAN, CRAWFORD COUNTY, IOWA.

PREVIOUSLY RECORDED IN BOOK: _____, PAGE: _____

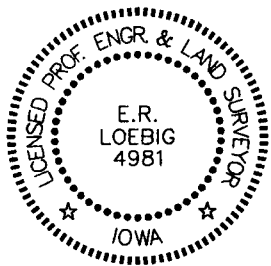
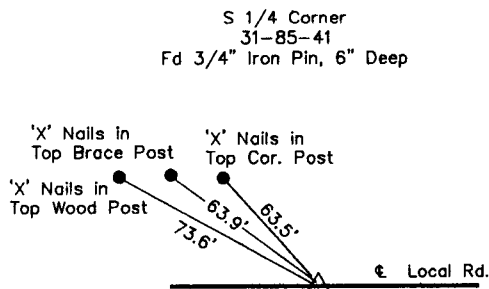
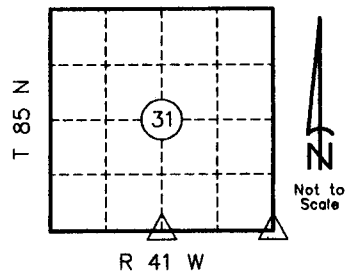
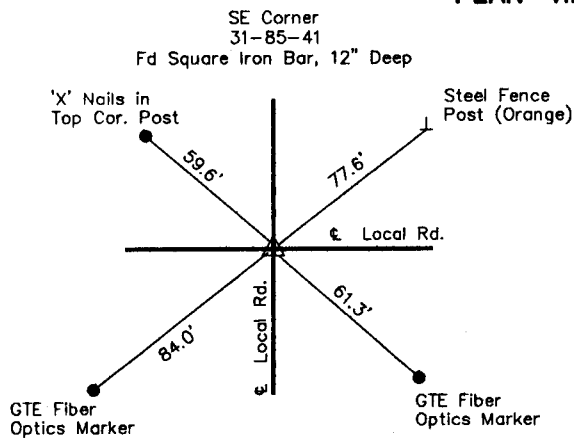
MONUMENT DESCRIPTION AND REMARKS: _____

1). SE Corner 31-85-41; Fd Square Iron Bar, 12" Deep

2). S 1/4 Corner 31-85-41; Fd 3/4" Iron Pin, 6" Deep

Stone ties were obtained from Crawford County Engineer's Office, were field verified and retied.

PLAN-VIEW



I hereby certify that this land surveying document was prepared and the related survey work was performed by me or under my direct personal supervision and that I am a duly licensed Land Surveyor under the laws of the State of Iowa.

E.R. Loebig 4/23/1999
E.R. Loebig, Land Surveyor Date

License number: 4981
My registration renewal date is December 31, 1999
Pages or sheets covered by this seal: one (1)

Corners to be Indexed

Corner	Section	Twp.	Range
SE Cor.	31	85	41
S 1/4 Cor.	31	85	41



L and H Engineers & Surveyors

117 South 2nd Street
Cherokee, Iowa 51012
Tel. (712) 225-0560
Fax (712) 225-8017