

PREPARED BY - TERENCE E. CRAWFORD - SUNDQUIST ENGINEERING - 120 S. MAIN DENISON, IOWA 51442 - PHONE (712)263-8118

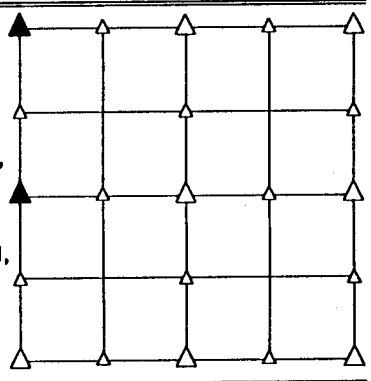
**UNITED STATES PUBLIC LAND SURVEY CORNER CERTIFICATE
 OF**

LAND SURVEY MONUMENT SITUATED IN SECTION 9, T 84 N, R 41 W OF
 THE 5TH P.M., CRAWFORD COUNTY, IOWA.
 PREVIOUSLY RECORDED IN BOOK _____, PAGE _____, OTHER _____

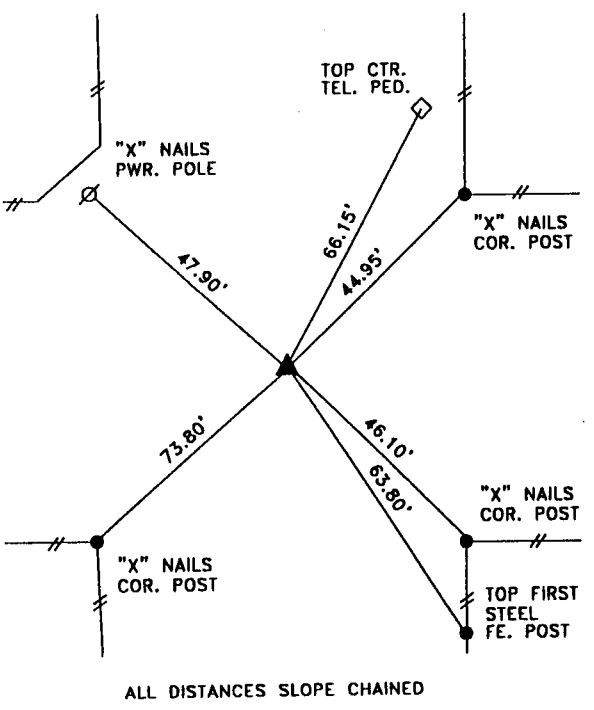
MONUMENT DESCRIPTION AND REMARKS

NW CORNER - FOUND PINCHED PIN 4" DEEP

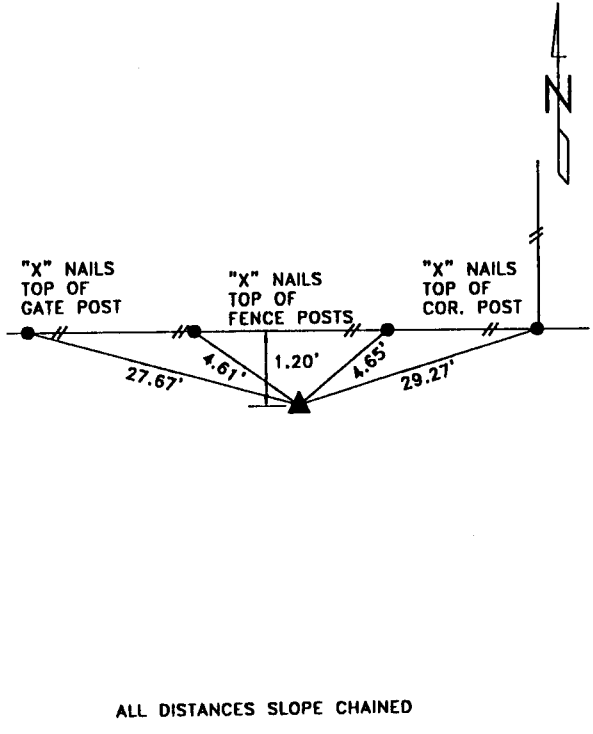
W1/4 CORNER - FOUND PINCHED PIN & 1' LONG STEEL FE. POST 1' DEEP, FOUND ORANGE BRICK 2' DEEP OVER CM 3' DEEP, PLACED PIN ON EAST SIDE OF CM & FE. POST ON WEST SIDE, PLACED BRICK ON TOP OF CM, RASIED WITH 5/8" IRON PIN W/CAP #8893 SET 4" DEEP



PLAN VIEW SHOWING RELATIVE LOCATION OF MONUMENT AND REFERENCE POINTS.



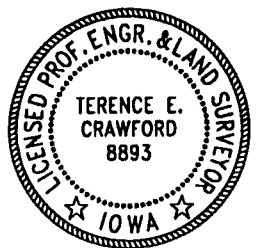
NW CORNER OF SECTION 9-84-41



W1/4 CORNER OF SECTION 9-84-41

I HEREBY CERTIFY THAT THE SURVEY WORK WAS COMPLETED AND THIS LAND SURVEYING DOCUMENT WAS PREPARED BY ME OR UNDER MY DIRECT PERSONAL SUPERVISION AND THAT I AM A DULY LICENSED LAND SURVEYOR UNDER THE LAWS OF THE STATE OF IOWA.

(Terence E. Crawford)
 TERENCE E. CRAWFORD
 IA LICENSE NO. 8893
 DATE
 MAR 04 1998
 EXP. DATE DECEMBER 31, 1999



SE PROJECT NO. 2048