

2004 JAN 26 AM 10:30

INST. NO. 2004-0217
DENISE MEEVES, RECORDER
Denise Meeves
FEE \$14.00

This document prepared by : Semke & Associates - 712-792-2276
Micheal G. Semke, L.S. #10318 - 716 N. Crawford St. - Carroll, Iowa

UNITED STATES PUBLIC LAND SURVEY CORNER CERTIFICATE
OF

Land Survey Monuments situated in Section 10, Township 84 North, Range 41
West, of the Fifth Principal Meridian, Crawford County, Iowa.
Previously recorded in Book , Page in County Recorder's Office.

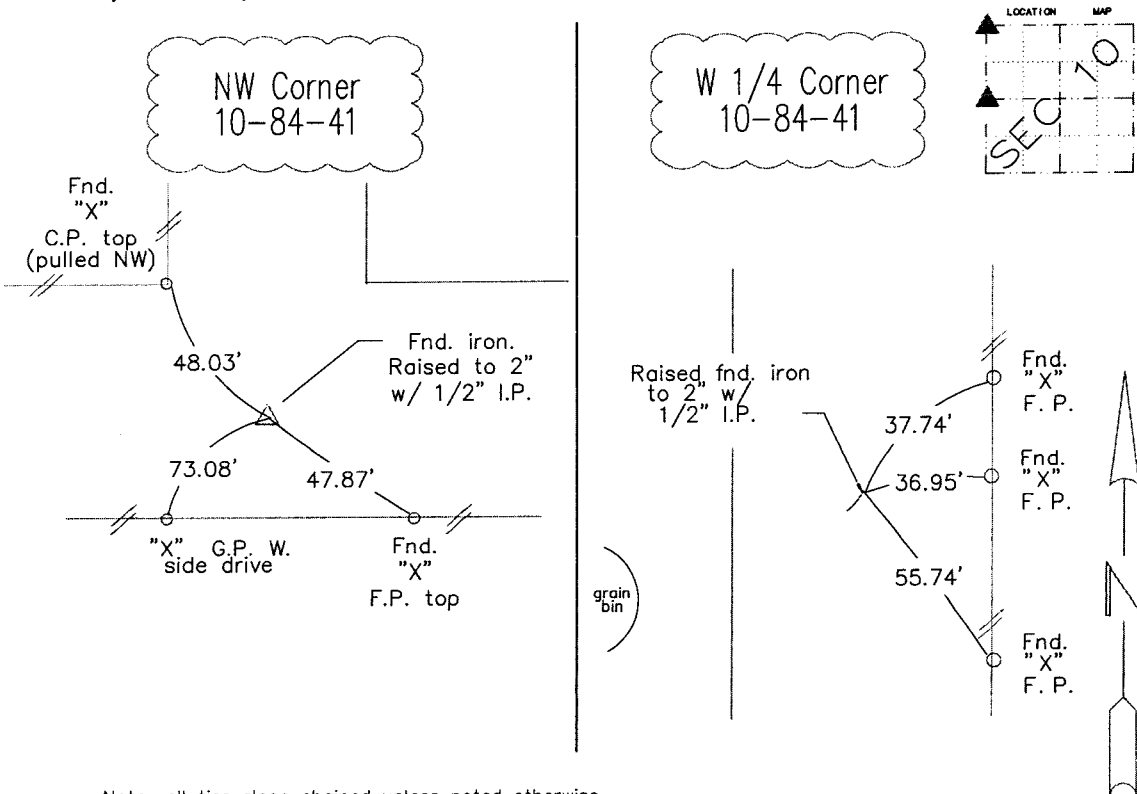
(Show reason for preparing this certificate, the evidence and detailed procedures used in establishing the corner positions and monumentation found or placed.)

NW Corner	Fnd. pinched iron 1 7/8" wide 14" deep. Raised to 2" w/ 1/2" I.P.
W 1/4 Corner	Found 3/4" iron rod 12" deep. Raised to 2" w/ 1/2" I.P. w/ cap.

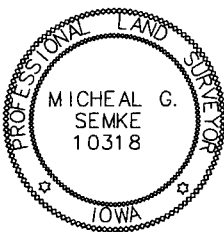
Note: All pins set are 1/2" x 24" Rerod w/Yellow Cap #10318 unless noted otherwise.

PLAN - VIEW

(Show a minimum of three reference ties to durable physical objects, relevant monuments and physical conditions that will enable recovery of the corner.)



Note: all ties slope chained unless noted otherwise.



I HEREBY CERTIFY THAT THIS CORNER CERTIFICATE
WAS PREPARED BY ME OR UNDER MY PERSONAL
SUPERVISION AND THAT I AM A PROFESSIONAL LAND
SURVEYOR UNDER THE LAWS OF THE STATE OF IOWA.
MY REGISTRATION IS SUBJECT TO RENEWAL ON 12-31-05.

Micheal G. Semke 12/29/03
Signature Date

Micheal G. Semke, L.S. No. 10318
Printed of Typed Name

List Corners to be Indexed			
Corners	Section	Twp	Range
NW Corner	10	84	41
NE Corner	9	84	41
SE Corner	4	84	41
SW Corner	3	84	41
W 1/4 Corner	10	84	41
E 1/4 Corner	9	84	41

Pages of sheets covered by this seal THIS PAGE My license is subject to renewal 12/31/05.