

COPY

RECORDED
FILED
PLAT
SERIAL
DATE

Crawford County Recorder
Denise Meeves
Fee Book 2009-1148
04/24/2009 @10:37AM
PLC PLAT CORNER CER
Book: Page: # Pages: 1
Total Fees: \$7.00

PREPARED BY JANELE FOWLDS, PLS. BOLTON & MENK, INC. 1960 PREMIER DRIVE MANKATO, MINNESOTA 56001 (507) 625-4171

UNITED STATES PUBLIC LAND SURVEY CORNER CERTIFICATE OF

Land Survey Monuments situated in Section 3, Township 83 North, Range 39 West of the Fifth Principal Meridian, Crawford County, Iowa. Previously recorded in _____ (not recorded) _____ in County Recorder's Office.

Monument Description and Remarks:

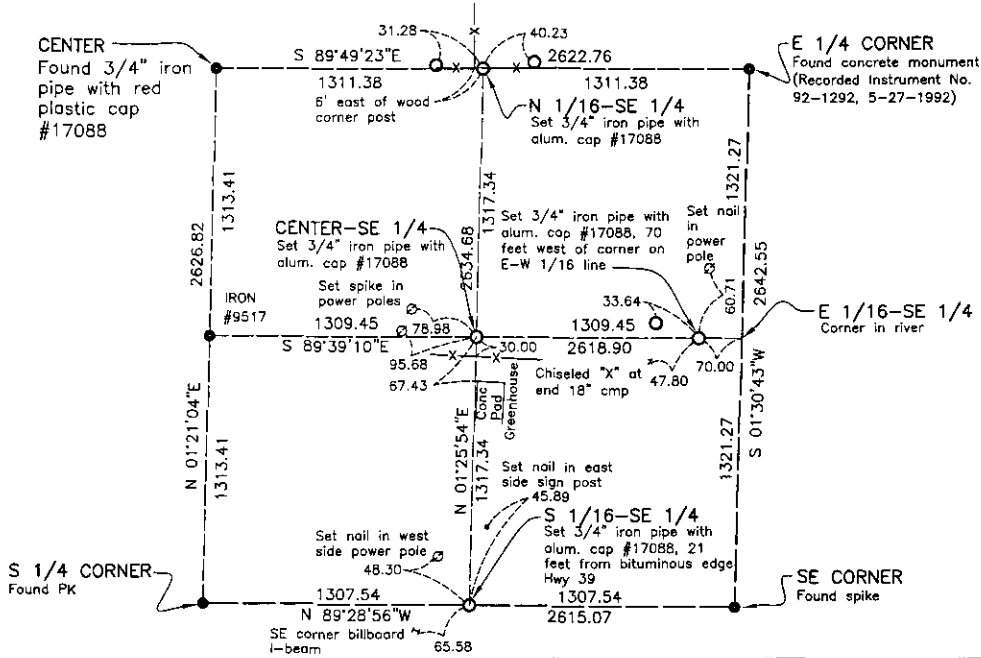
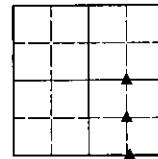
North 1/16 of SE 1/4 - Set 3/4" iron pipe with aluminum cap, #17088 at corner. Set 3/4" iron pipe reference monuments at the two tie positions.

East 1/16 of SE 1/4 - Set 3/4" iron pipe with aluminum cap, #17088, 70.00 feet west of corner on E-W 1/16 line. Set 3/4" iron pipe reference monument at tie position. Set nail in power pole and "x" end of cmp at tie positions.

South 1/16 of SE 1/4 - Set 3/4" iron pipe with aluminum cap, #17088 at corner. Set nails as reference monuments at two tie positions.

Center of SE 1/4 - Set 3/4" iron pipe with aluminum cap, #17088 at corner. Set spike in power poles at tie positions.

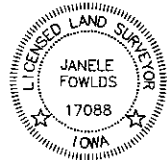
These corners were used for a survey in this section for Wal-Mart Stores, Inc.



I:\WALM\M1538295\CAD\SEC 3_COR_CERT.DWG 04-20-2009 3:08p.m.

I hereby certify that this land surveying document was prepared and the related surveying work was performed by me or under my direct supervision and that I am a duly licensed Land Surveyor under the laws of the State of Iowa.

Janele Fowlds 4-21-09
Janele Fowlds, PLS Date
License No. 17088
My License Renewal Date is December 31, 2009
Pages or sheets covered by this seal: 1



CORNER INDEXED

Corner: N 1/16 of SE 1/4
E 1/16 of SE 1/4
S 1/16 of SE 1/4
Center of SE 1/4
Section: 3
Township: 83
Range: 39

BOLTON & MENK, INC.
Consulting Engineers & Surveyors

1960 PREMIER DRIVE, MANKATO, MN 56001 (507) 625-4171
MANKATO, MN FAIRMONT, MN SLEEPY EYE, MN BURNSVILLE, MN
WILLMAR, MN CHASKA, MN RAMSEY, MN AMES, IA