

1915

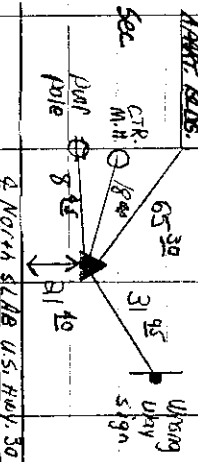
1914 12-23-39

Found Pinned Pin 3" Deep

HAVER 2.005.

2x Nails in Wood Posts

Retired from Sec. Cor. Cart.

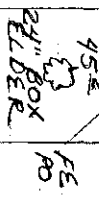


2 NORTH SLAB US. Hwy. 30

SE. COR. SW 1/4

SET 3/8" IRON PIN 10" DEEP

1977 IDOT TIES

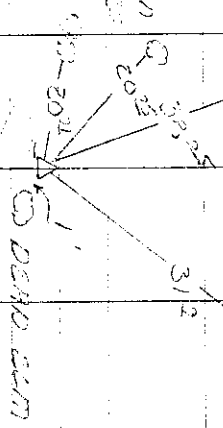


SE COR. SW 1/4 12-23-39

8" BOX ELDER

2x SCUMPS 2x BOX ELDER

1/2" TURN BOX ELDER



WEST 5/8" IRON PIN (EXP. 2001)

1977 IDOT TIES

1908E

WINNERS COR. 1/2" IRON PIN

1915

McKeown ties 3/30/33

3819 Cth Ave. North

Knails Bower's

Speed sign 1' high

light base

10-83-39 NE. Cor. SE 1/4, SE 1/4 Pump IS1. set lead plug

Post sta 89140710 set in 5/186

Sta. 88216.0

Near Cor. water works Bldg. 1' high

3/28/72 Stone 1/2" deep

NE Cor. NW 1/4, SE 1/4 10-83-39

