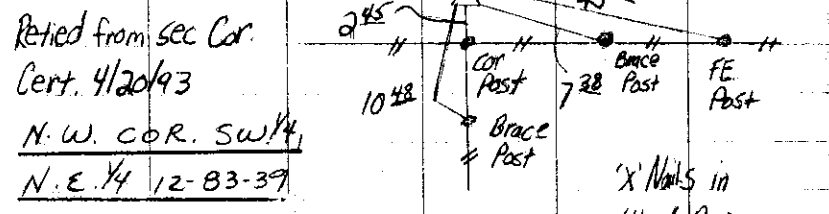
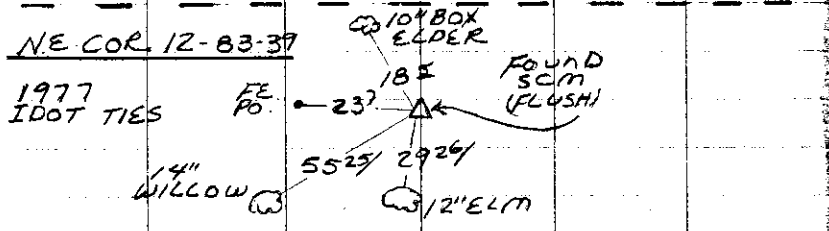
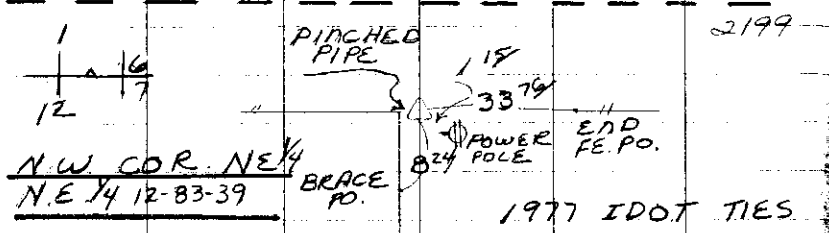
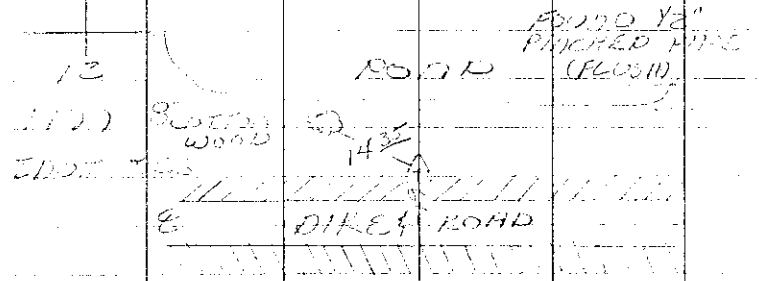


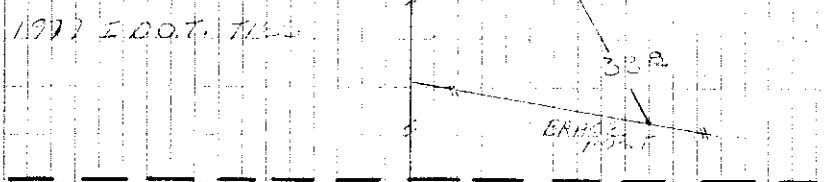
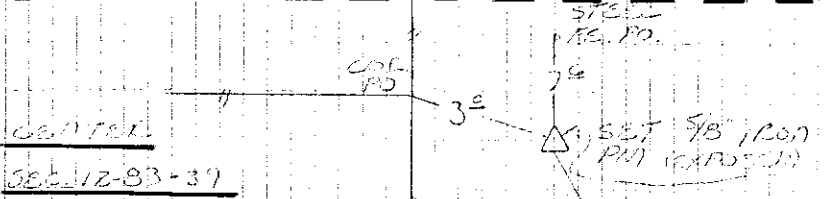
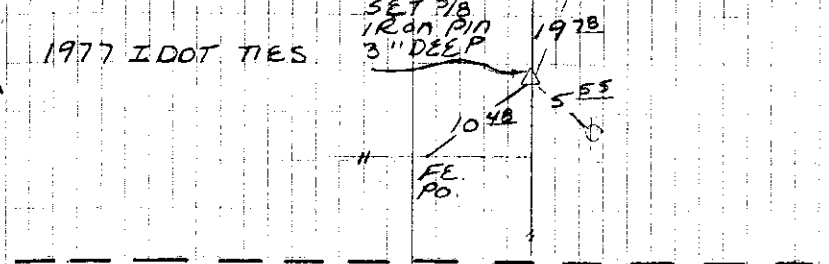
N 1/4 COR. 12-83-39



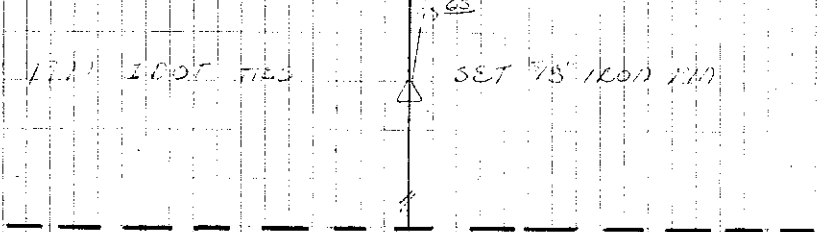
Retied from sec Cor. Cert. 4/20/93
Found iron pin by 2'x2'x10\" ROCK

'X' Nails in Wood Posts

NE COR SW 1/4 NE 1/4
12-83-39



N.E. COR. N.W. 1/4
SEC. 12-83-39



N.E. COR. SE 1/4 NE 1/4
SEC. 12-83-39 SET 5/8\" IRON PIN & STEEL POST