

96 JUN -4 AM 10: 01

INST. NO. 96-1609
DENISE MEEVES, RECORDER

Denise Meeves
FEE 26.00

SLSI 9-94

INDEXED
FOLLOW UP
PROOFED
DM

UNITED STATES PUBLIC LAND SURVEY CORNER CERTIFICATE

OF

Land Survey Monuments situated in Section 13, Township 83, Range 39, of the Fifth Principal Meridian, Crawford County, Iowa.
Previously recorded in does not apply in County Recorder's Office.
(book, page, document number, etc.)

(Show reason for preparing this certificate, the evidence and detailed procedures used in establishing the corner positions and monumentation found or placed.)

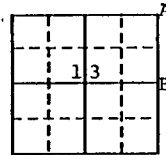
Monument Description and Remarks: Located monuments as described below

PLAN - VIEW

(Show a minimum of three reference ties to durable physical objects, relevant monuments and physical conditions that will enable recovery of the corner.)

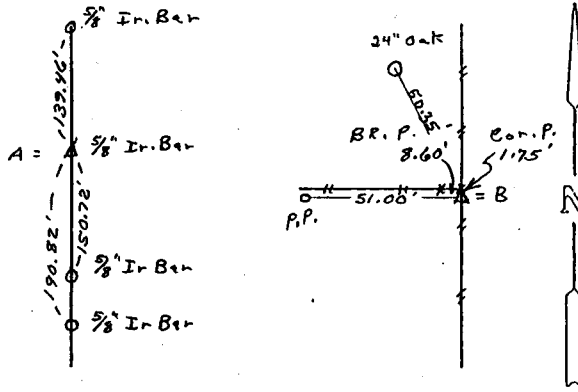
A. Located 5/8" dia. iron bar @ ground line @ NE cor of Sec. 13

- 5/8" iron bar north 139.46'
- 5/8" iron bar south 150.72'
- 5/8" iron bar south 190.82'



B. Located conc. mon. (WPA) with brass plate 4" deep @ E 1/4 corner

- x-nails in power pole west 51.00'
- x-nails in brace post west 8.60'
- x-nails in 24" oak NW 50.35'
- x-nails in corner post North 1.75'



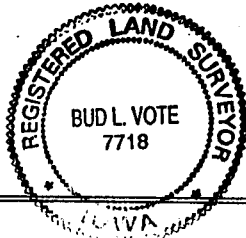
I hereby certify that the survey work was completed and this land surveying document was prepared by me or under my direct personal supervision and that I am a duly registered land surveyor under the laws of the state of Iowa

Signature: *Bud L. Vote*
Name typed or printed: Bud L. Vote

Date: May 23, 1996 Reg. No. 7718

My registration renewal date is December 31, 1996

SEAL



Corners	List Corners to be Indexed Section	Twp	Range
NE	13	83	39
E 1/4	"	"	"