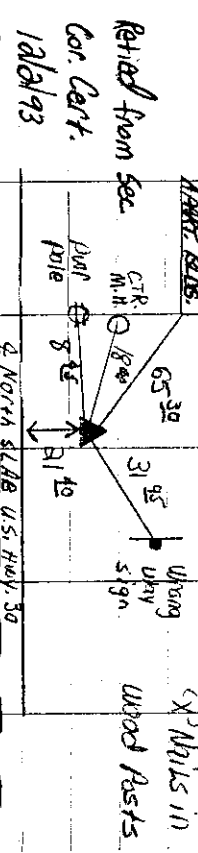


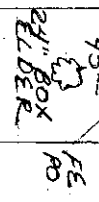
1915
NW COR SW 1/4,
SE 1/4 12-83-39

Found Pinned Pin 3" DEEP



Retired from Sec
Cor. Cart.
12/21/93

SE COR SW 1/4
SE 1/4 12-83-39



SET 3/8" IRON PIN
1/0" DEEP

SE COR
12-83-39

8" BOX ELDER

1/2" TWIN
BY EDWARDS



WEST 5/8" IRON
PIN (EXPOSED)

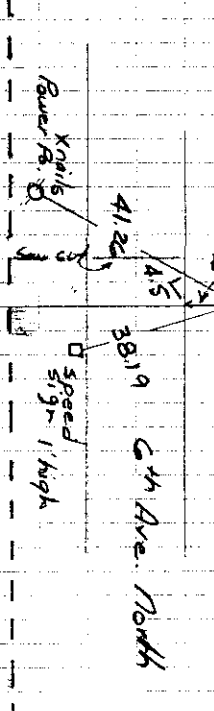
1977 IDOT TIES

1908E

WIMMERS COR. 1/20' PIN

NE COR NW 1/4, NE 1/4 11-83-39

McKeown Ties 3/30/73



1/4" base

NE COR SE 1/4, SE 1/4
Pump IS 1,
set lead plug

Post Sta
89140710
Set in 5/18/6

Sta. 88216.0

3/28/72 Stone
1/2" deep

Near Cor
water works
Bldg. 1' high

NE COR NW 1/4, SE 1/4
10-83-39

