

INDEXED 20  
 FOLLOW UP 20  
 PHOTOED 877  
 SCANNED 9

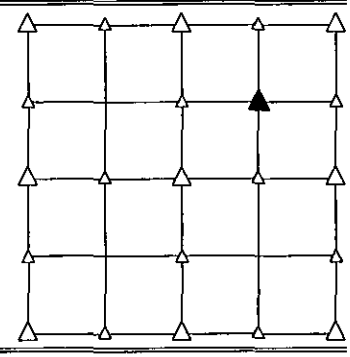
Crawford County Recorder  
 Denise Meeves  
**Fee Book 2010-0173** ✓  
 01/28/2010 @10:05AM  
 PLC PLAT CORNER CER  
 Book: Page: # Pages: 1  
 Total Fees: \$9.00

PREPARED BY - JOSEPH P. RUESCHENBERG - SUNDBLIND ENGINEERING - 120 S. MAIN, DENISON, IOWA 51442 - PHONE (712) 263-8118

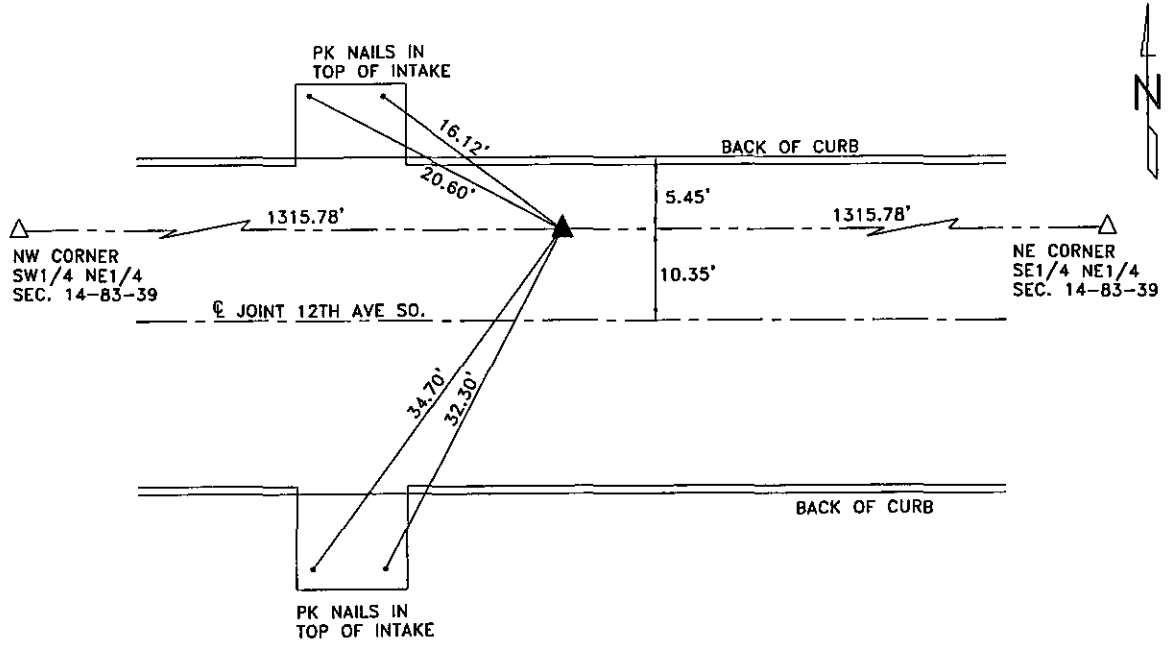
**UNITED STATES PUBLIC LAND SURVEY CORNER CERTIFICATE  
 OF**

LAND SURVEY MONUMENT SITUATED IN SECTION 14, T 83 N, R 39 W OF  
 THE 5TH P.M., CRAWFORD COUNTY, IOWA.  
 PREVIOUSLY RECORDED IN BOOK \_\_\_\_\_, PAGE \_\_\_\_\_, OTHER \_\_\_\_\_

MONUMENT DESCRIPTION AND REMARKS  
 NW CORNER SE1/4 NE1/4 - FOUND PK NAIL.



PLAN VIEW SHOWING RELATIVE LOCATION OF MONUMENT AND REFERENCE POINTS.

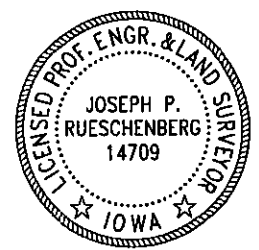


DISTANCES PLUMB CHAINED

NW CORNER SE1/4 NE1/4 SECTION 14-83-39

I HEREBY CERTIFY THAT THIS LAND SURVEYING DOCUMENT WAS PREPARED AND THE RELATED SURVEY WORK WAS PERFORMED BY ME OR UNDER MY DIRECT PERSONAL SUPERVISION AND THAT I AM A DULY LICENSED LAND SURVEYOR UNDER THE LAWS OF THE STATE OF IOWA.

*Joseph P. Rueschenberg* DEC 29 2009  
 JOSEPH P. RUESCHENBERG DATE  
 IA LICENSE NO. 14709 EXP. DATE DECEMBER 31, 2010



SE PROJECT NO. 23409  
 DRAWN BY: LLL