

2004 JAN 28 AM 9:31

INST. NO. 2004-0245
DENISE MEEVES, RECORDER
Denise Meeves
FF# 1110

This document prepared by : Semke & Associates - 712-792-2276
Micheal G. Semke, L.S. #10318 - 716 N. Crawford St. - Carroll, Iowa

UNITED STATES PUBLIC LAND SURVEY CORNER CERTIFICATE
OF

Land Survey Monuments situated in Section 19, Township 83 North, Range 39
West, of the Fifth Principal Meridian, Crawford County, Iowa.
Previously recorded in Book _____, Page _____ in County Recorder's Office.

(Show reason for preparing this certificate, the evidence and detailed procedures used in establishing the corner positions and monumentation found or placed.)

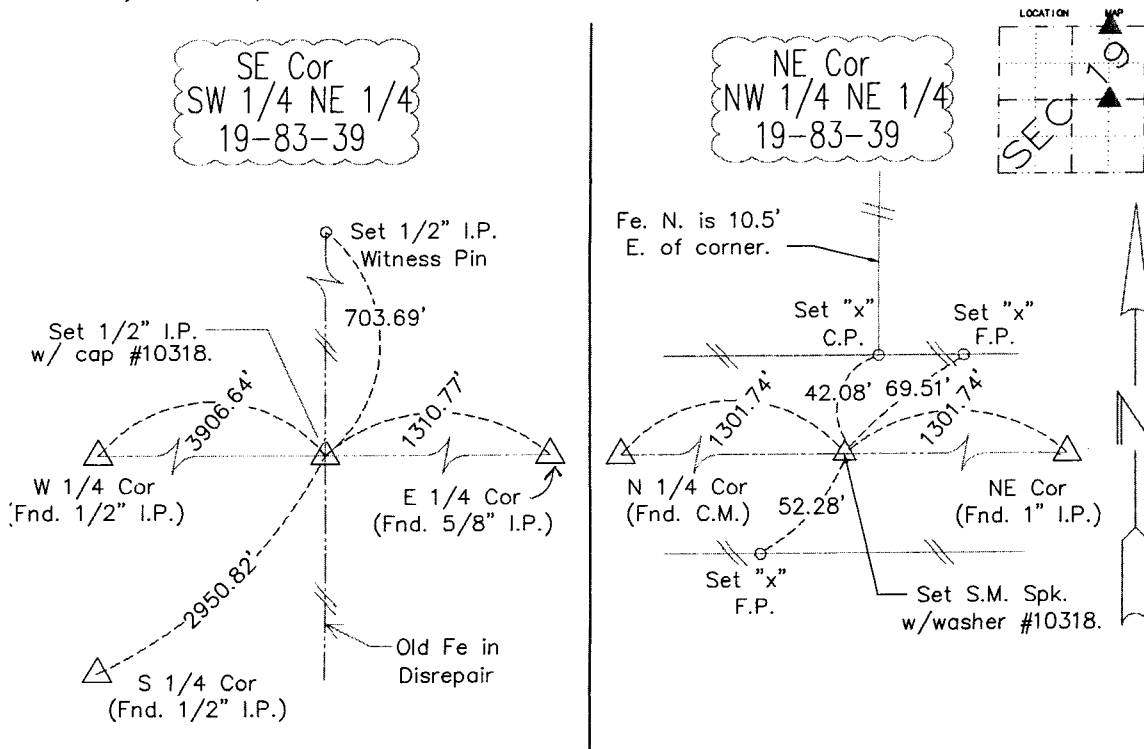
NE Cor NW 1/4 NE 1/4 Set S.M. w/washer #10318 @ Mid-
point of N. line of the NE 1/4

SE Cor SW 1/4 NE 1/4 Set 1/2" I.P. @ Midpoint of S. line
of the NE 1/4

Note: All pins set are 1/2" x 24" Rerod w/Yellow cap #10318 unless noted otherwise.

PLAN - VIEW

(Show a minimum of three reference ties to durable physical objects, relevant monuments and physical conditions that will enable recovery of the corner.)



Note: all ties slope chained unless noted otherwise.



I HEREBY CERTIFY THAT THIS CORNER CERTIFICATE
WAS PREPARED BY ME OR UNDER MY PERSONAL
SUPERVISION AND THAT I AM A PROFESSIONAL LAND
SURVEYOR UNDER THE LAWS OF THE STATE OF IOWA.
MY REGISTRATION IS SUBJECT TO RENEWAL ON 12-31-05.

Micheal G. Semke 1/10/04
Signature Date
Micheal G. Semke, L.S. No. 10318
Printed of Typed Name

List Corners to be Indexed

Corners	Section	Twp	Range
NE Cor. NW 1/4 NE 1/4	19	83	39
SE Cor. SW 1/4 NE 1/4	19	83	39

Pages of sheets covered by this seal THIS PAGE, My license is subject to renewal 12/31/05.