

2004 JAN 28 AM 9:32

INST. NO. 2004-0246
DENISE MEEVES, RECORDER
Denise Meeves
FEE 11.00

This document prepared by : Semke & Associates - 712-792-2276
Michael G. Semke, L.S. #10318 - 716 N. Crawford St. - Carroll, Iowa

UNITED STATES PUBLIC LAND SURVEY CORNER CERTIFICATE
OF

Land Survey Monuments situated in Section 19, Township 83 North, Range 39
West, of the Fifth Principal Meridian, Crawford County, Iowa.
Previously recorded in Book _____, Page _____ in County Recorder's Office.

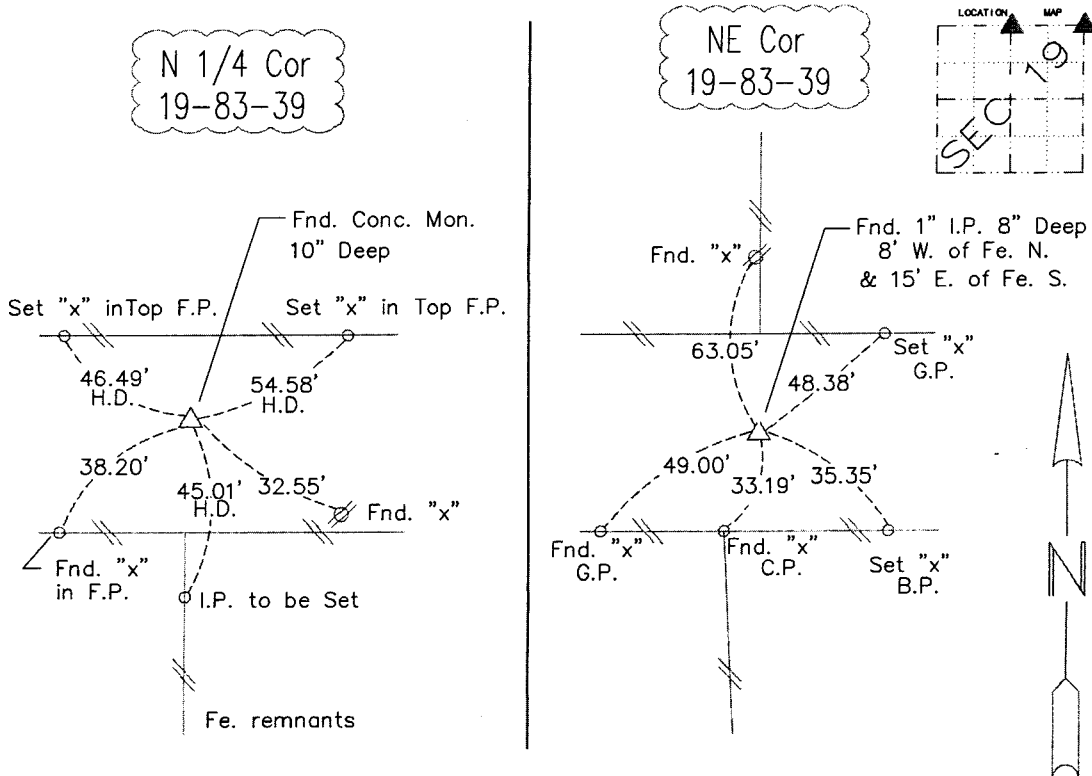
(Show reason for preparing this certificate, the evidence and detailed procedures used in establishing the corner positions and monumentation found or placed.)

N 1/4 Corner	Found Conc. Mon. 10" deep
	Mon. top broken - Used CL rod
	for Corner
NE Corner	Found 1" Iron Pin 8" deep

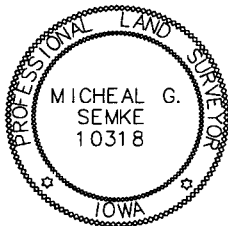
Note: All pins set are 1/2" x 24" Rerod w/Yellow cap #10318 unless noted otherwise.

PLAN - VIEW

(Show a minimum of three reference ties to durable physical objects, relevant monuments and physical conditions that will enable recovery of the corner.)



Note: all ties slope chained unless noted otherwise.



I HEREBY CERTIFY THAT THIS CORNER CERTIFICATE
WAS PREPARED BY ME OR UNDER MY PERSONAL
SUPERVISION AND THAT I AM A PROFESSIONAL LAND
SURVEYOR UNDER THE LAWS OF THE STATE OF IOWA.
MY REGISTRATION IS SUBJECT TO RENEWAL ON 12-31-05.

Michael G. Semke 1/10/04
Signature Date
Michael G. Semke, L.S. No. 10318
Printed of Typed Name

List Corners to be Indexed

Corners	Section	Twp	Range
N 1/4 Corner	19	83	39
S 1/4 Corner	18	83	39
NE Corner	19	83	39
SE Corner	19	83	39
NW Corner	17	83	39
SW Corner	20	83	39

Pages of sheets covered by this seal THIS PAGE, My license is subject to renewal 12/31/05.