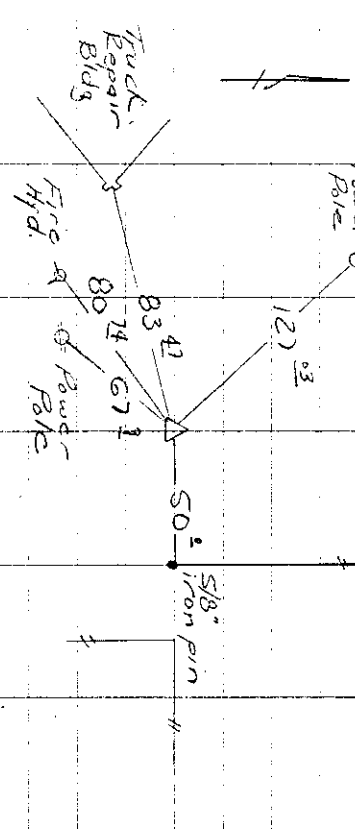
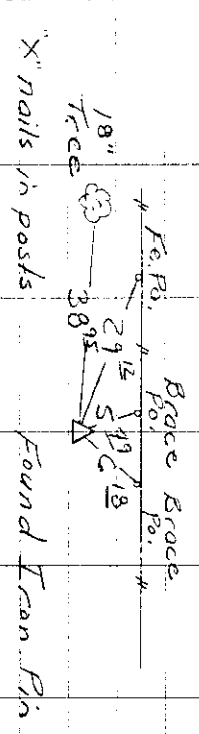


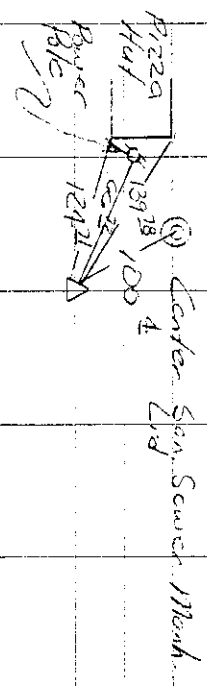
SW. Cor NE 1/4, SW 1/4 Sec. 15
 Ties from Ia. Reg. # 4129 Set 5/8" iron Pin
 10/16/90
 Knails in poles



SE Cor NE 1/4, SW 1/4 Sec. 15
 10/16/90 Ties from Ia. Reg. # 4129

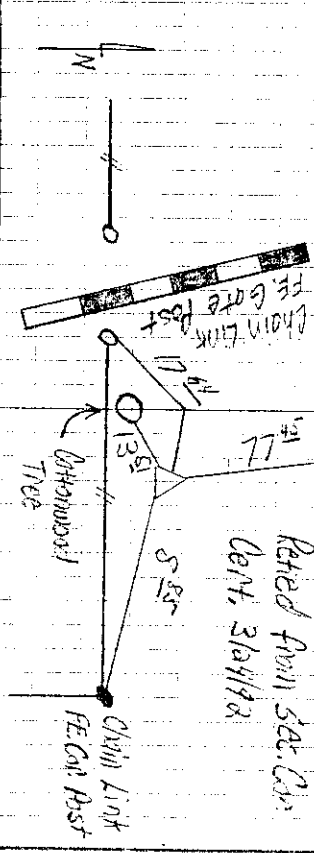


NU. Cor. NE 1/4, NE 1/4 Sec. 10
 Set capped Iron Pin
 Sundquist Crew.
 RCS # 4129

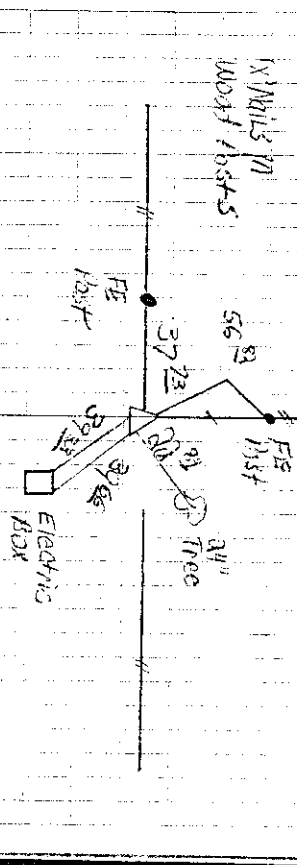


SE. Cor. SW 1/4 SE 1/4 SEC. 10-83-39 12R

Found exposed 5/8" rebar
 with steel FE. Post



SW Cor NE 1/4, NW 1/4 Sec. 12 Reried from sec. 10-83-39



CTR Sec. 21-83-39

