

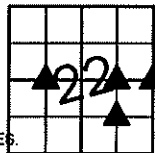
Sara Meseck, RECORDER
 Crawford County, Iowa
 Instr. Number: 2025-2197
 Recorded: 11/7/2025 at 4:08:52.0 PM
 Pages 1
 County Recording Fee: \$7.00
 Iowa E-Filing Fee: \$3.13
 Combined Fee: \$10.13
 Revenue Tax:

PREPARED BY AND RETURN TO: MIKE SCHULTE, SCHULTE SURVEYING, INC., 2003 390TH STREET, WESTSIDE, IA 51467 (712) 790-3489

UNITED STATES PUBLIC LAND SURVEY CORNER CERTIFICATE OF
 LAND SURVEY MONUMENTS SITUATED IN SECTION 22, TOWNSHIP 83 NORTH, RANGE 39 WEST, OF THE FIFTH
 PRINCIPAL MERIDIAN, CRAWFORD COUNTY, IOWA. PREVIOUSLY RECORDED IN SEE BELOW IN COUNTY
(book, page instrument number)
 RECORDER'S OFFICE.

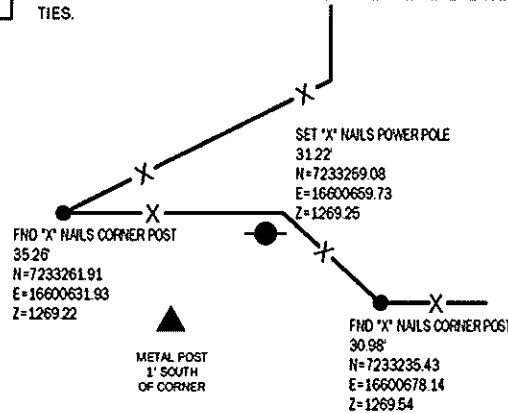
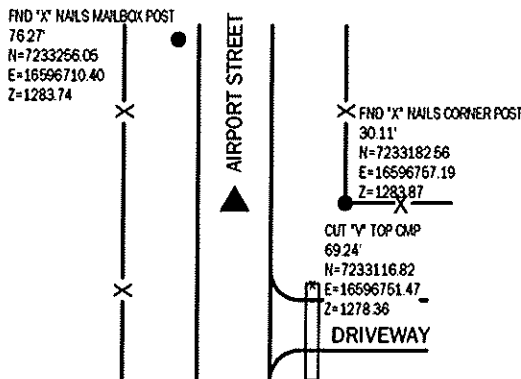
SE CORNER SW1/4 NW1/4

FND BOLT 1/2" UNDER SEALCOAT
 N=7233181.63 E=16596727.10 Z=1281.37
 USED CERTIFICATE RECORDED IN INSTRUMENT #94-1142 AND
 A METAL LOCATOR TO FIND A BOLT 1/2" UNDER SEALCOAT.
 VERIFIED WITH 2 REMAINING TIES.
 THIS CERTIFICATE IS BEING FILED TO UPDATE THE REFERENCE TIES.



E1/4 CORNER

FND 1/2" REBAR 12" DEEP
 N=7233230.32 E=16600647.59 Z=1267.20
 USED CERTIFICATE RECORDED IN INSTRUMENT #2001-3687
 AND A METAL LOCATOR TO FIND A 1/2" REBAR 12" DEEP.
 VERIFIED WITH 3 REMAINING TIES.
 THIS CERTIFICATE IS BEING FILED TO UPDATE THE REFERENCE
 TIES.

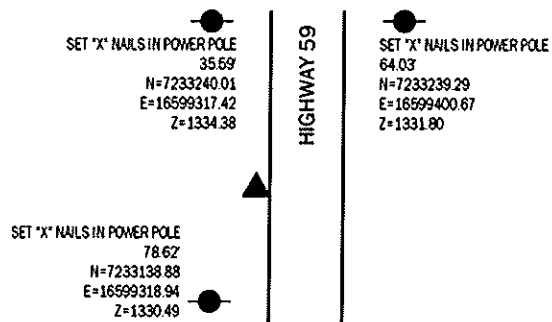
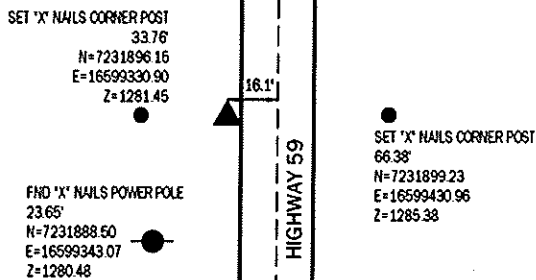


SW CORNER NE1/4 SE1/4

SET 5/8" REBAR YPC #17979 4" DEEP
 N=7231898.30 E=16599364.59
 NO CORNER CERTIFICATE FOUND. A 1982 SURVEY IN THE NE1/4 SE1/4
 WHICH SHOWS A NAIL, NO PROPERTY CORNERS FROM THIS SURVEY WERE
 FOUND. NO OTHER RECORDS OF CORNER WAS FOUND. USED OLD STRIP MAPS
 AND IOWA DOT EASEMENTS FROM 1932 ALONG WITH EXISTING ROAD
 CENTERLINE AND A POST TO THE EAST TO ESTABLISH CORNER LOCATION. SET
 A MAG NAIL 0.2' FROM EDGE OF ASPHALT SHOULDER.
 THIS CERTIFICATE IS BEING FILED DUE TO NONE OF RECORD.

NE CORNER NW1/4 SE1/4

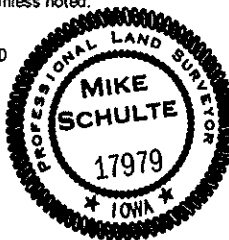
SET 5/8" REBAR YPC #17979 4" DEEP
 N=7233214.10 E=16599341.81 Z=1330.50
 NO RECORD OF CORNER FOUND. USED SURVEY RECORDED IN BOOK
 2007 PAGE 2720 TO CALCULATE POSITION. SET 5/8" REBAR YPC
 #17979 4" DEEP IN GRAVEL SHOULDER.
 THIS CERTIFICATE IS BEING FILED DUE TO NONE OF RECORD.



*All distances are measured horizontally unless noted.

I HEREBY CERTIFY THAT THIS LAND SURVEYING DOCUMENT WAS
 PREPARED BY ME OR UNDER MY DIRECT PERSONAL SUPERVISION AND
 THAT I AM A DULY LICENSED PROFESSIONAL LAND SURVEYOR UNDER
 THE LAWS OF THE STATE OF IOWA.

Mike Schulte
 MIKE SCHULTE
 LICENSE NUMBER 17979
 LICENSE RENEWAL DATE IS DECEMBER 31, 2026
 PAGES COVERED BY THIS SEAL: 1 OF 1



LIST CORNERS TO BE INDEXED

CORNER	SECTION	TWP	RANGE
E1/4 CORNER	22	83	39
W1/4 CORNER	23	83	39
SE CORNER SW1/4 NW1/4	22	83	39
SW CORNER NE1/4 SE1/4	22	83	39
NE CORNER NW1/4 SE1/4	22	83	39

BASIS OF BEARING

1aRCS ZONE 6 - US SURVEY FEET
 1aRTH DERIVED - NAD83(2011)(EPOCH 2010.00)

SCHULTE SURVEYING, INC.

DRAWN BY: SLG
 PROJ NUMBER: 25-090