

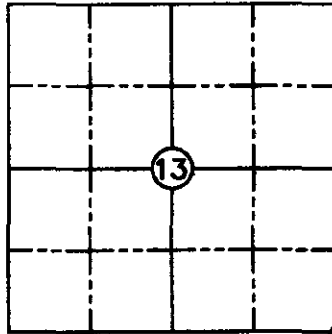
WILKE LAND SURVEYING INC. 401 1800th Street Panama, Iowa 51562 (712)489-2895

UNITED STATES PUBLIC LAND SURVEY CORNER CERTIFICATE

SECTION 13 TOWNSHIP 83N RANGE 39W COUNTY CRAWFORD
 Reason for Certificate: (No record Certificate)

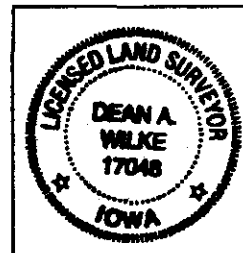
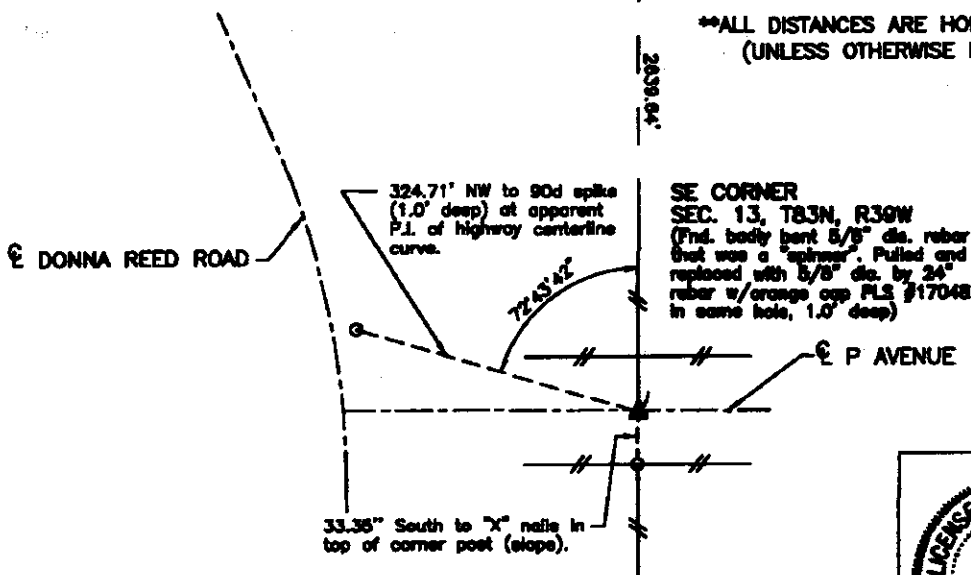
Monument Description and Remarks:

SE CORNER - Found badly bent 5/8" diameter rebar that was a "spinner". Pulled and replaced with a 5/8" diameter by 24" rebar with orange cap PLS #17048 in same hole (1.0' deep).



E1/4 CORNER
 SEC. 13, T83N, R39W
 (Fnd. conc. mon.
 w/brass disc)

ALL DISTANCES ARE HORIZONTAL
 (UNLESS OTHERWISE NOTED)



I hereby certify that this land surveying document was prepared and the related survey work was performed by me or under my direct personal supervision and that I am a duly Licensed Land Surveyor under the laws of the State of Iowa.

Dean A. Wilke 11/20/13
 Dean A. Wilke

License number 17048
 My license renewal date is December 31, 2013
 Pages or sheets covered by this book: This page only

List Corners to be Indexed			
Corner	Section	Twp.	Range
SE CORNER	13	83N	39W